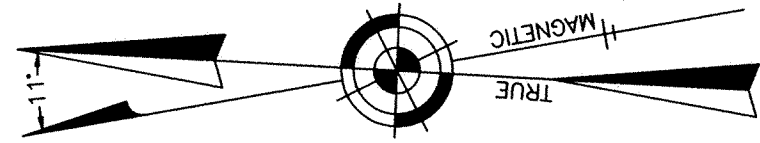


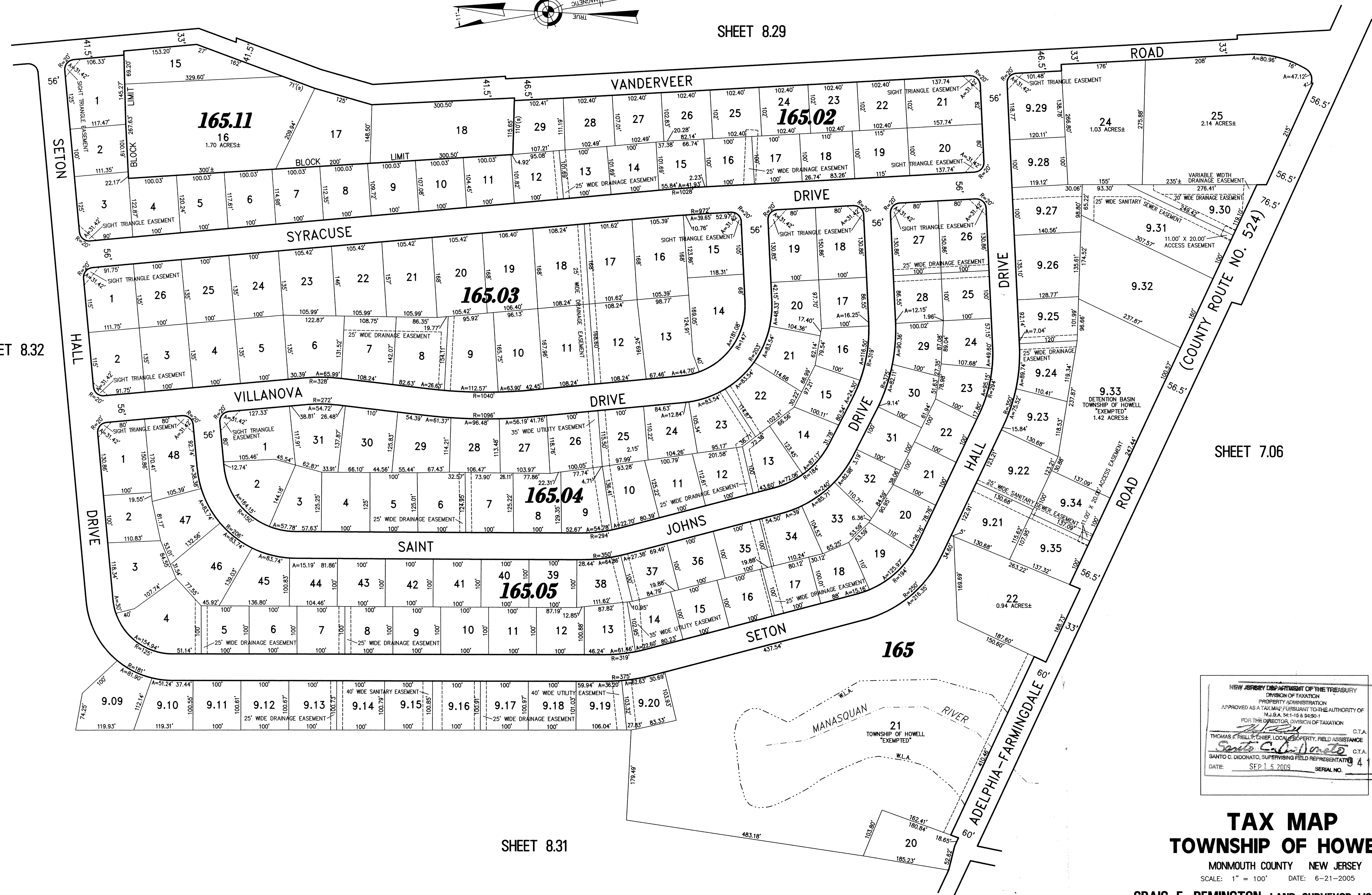
SHEET 8.29



SHEET 8.32

SHEET 7.06

SHEET 8.31



NEW JERSEY DEPARTMENT OF THE TREASURY  
 DIVISION OF TAXATION  
 PROPERTY ADMINISTRATION  
 APPROVED AS A TAX MAP PURSUANT TO THE AUTHORITY OF  
 N.J.S.A. 54:15-6 & 54:50-1  
 FOR THE DIRECTOR, DIVISION OF TAXATION  
*Thomas C. DiDonato* C.T.A.  
 THOMAS C. DI DONATO, CHIEF, LOCAL PROPERTY, FIELD ASSISTANCE  
*Sanjo Calabro* C.T.A.  
 SANJO C. DI DONATO, SUPERVISING FIELD REPRESENTATIVE  
 DATE: SEP 15, 2005 SERIAL NO. 4

**TAX MAP**  
**TOWNSHIP OF HOWELL**

MONMOUTH COUNTY NEW JERSEY  
 SCALE: 1" = 100' DATE: 6-21-2005

CRAIG F. REMINGTON LAND SURVEYOR LIC. NO. 23924

**REMINGTON, VERNICK & VENA ENGINEERS**  
 9 ALLEN STREET, TOMS RIVER, NJ 08753  
 (732) 286-9220, FAX (732) 505-8486  
 WEB SITE ADDRESS: WWW.RVVE.COM

THE WOODS AT HOWELL & PINWOOD HOMES  
 PART OF OLD PLATES 46 & 53