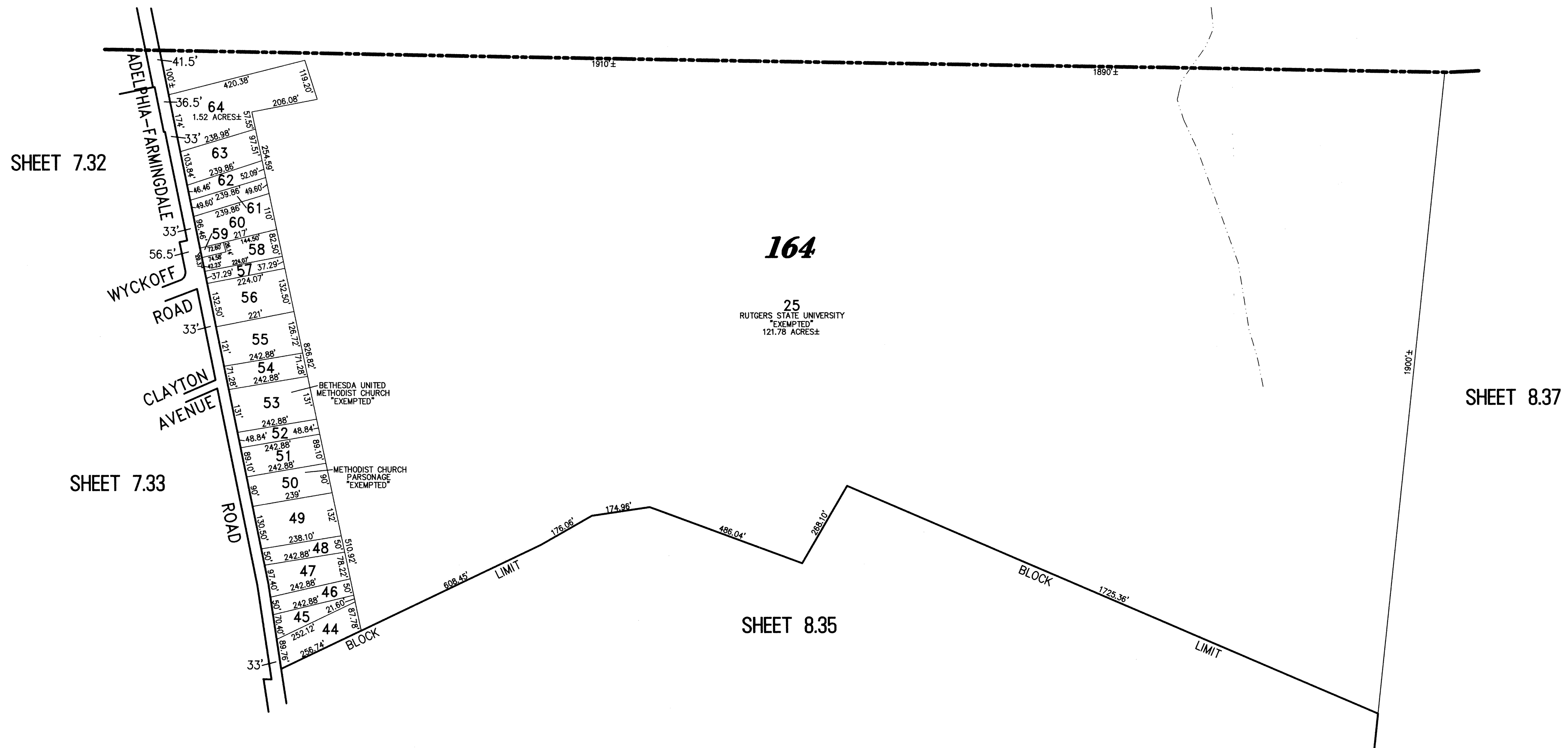


TOWNSHIP OF FREEHOLD
COUNTY OF MONMOUTH



SHEET 7.32

SHEET 7.33

164

SHEET 8.37

SHEET 8.35

APPROVED AS A TAX MAP PURSUANT TO THE AUTHORITY OF
FOR THE DIRECTOR, DIVISION OF TAXATION
THOMAS J. FIELL, CHIEF, LOCAL PROPERTY, FIELD ASSISTANCE
SANTO C. DICICATO, SUPERVISING FIELD REPRESENTATIVE
DATE: SEP 15 2009 SERIAL NO. 941

TAX MAP
TOWNSHIP OF HOWELL

MONMOUTH COUNTY NEW JERSEY
SCALE: 1" = 200' DATE: 6-21-2005
CRAIG F. REMINGTON LAND SURVEYOR LIC. NO. 23924

REMINGTON, VERNICK & VENA ENGINEERS
9 ALLEN STREET, TOMS RIVER, N.J. 08753
(732) 286-9220, FAX (732) 505-8416
WEB SITE ADDRESS: WWW.RVVE.COM

PART OF OLD PLATES 52 & 56