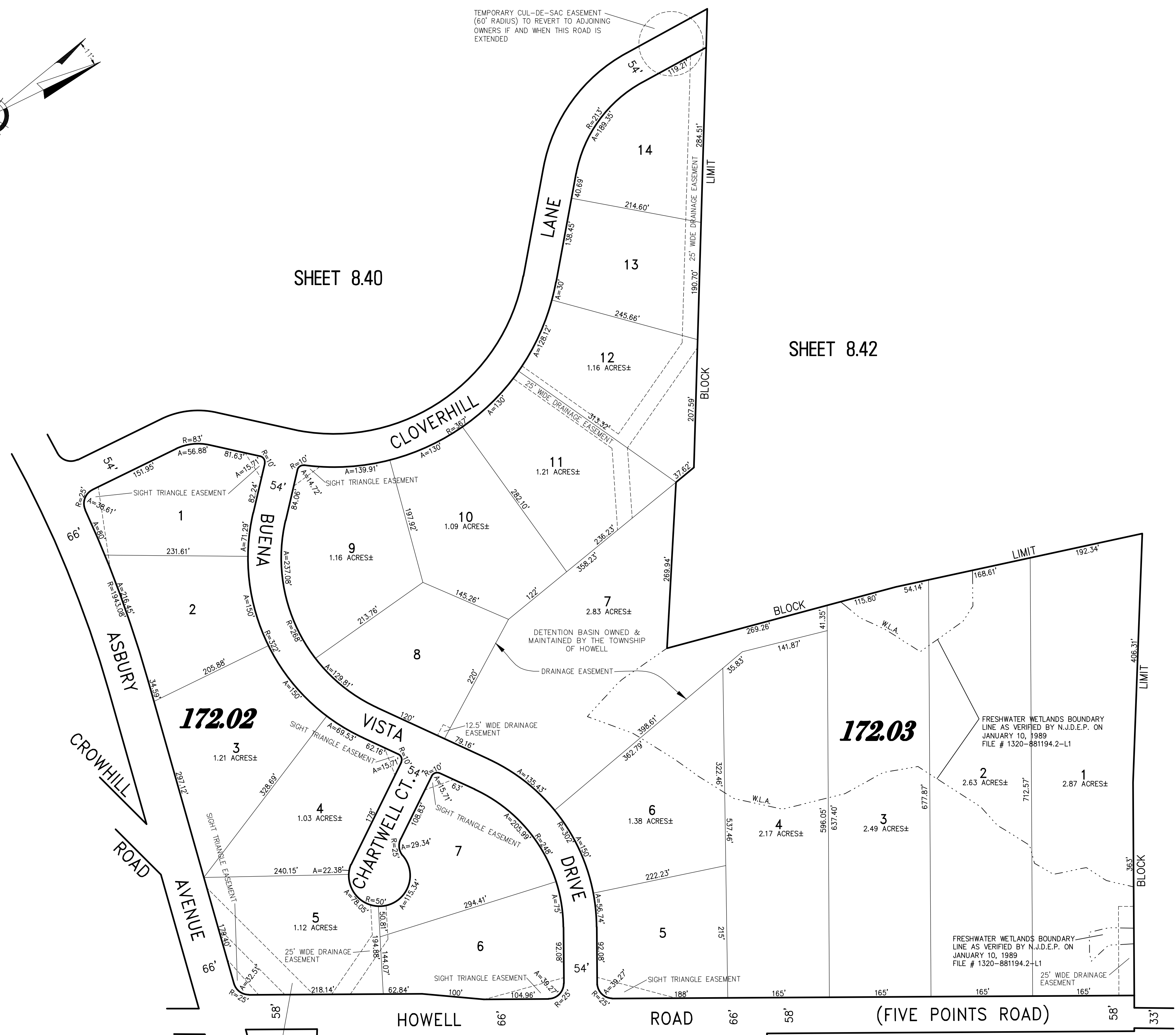
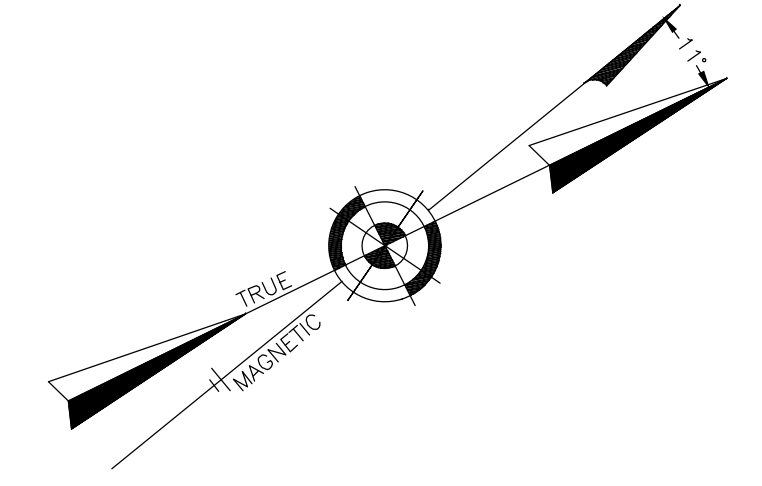


REVISIONS		
DATE	NAME	LIC. No.
12/15/17	GLEN J. LLOYD P.L.S.	37598



SHEET 8.39

SHEET 8.40

SHEET 8.42

SHEET 8.42

SHEET 8.21

SHEET 8.22

PORTION OF CROW HILL ROAD (33' WIDE)  
 SHOWN AS VACATED ON TAX MAP.  
 VACATED BY ORDINANCE 0-89-19  
 008-0395,6,7, & 8, 9/18/89

THIS SHEET WAS FORMALLY CERTIFIED ON  
 SEPTEMBER 14, 2009, ASSIGNED SERIAL  
 NUMBER 941, SIGNED BY THOMAS J. REILLY,  
 C.T.A., LOCAL PROPERTY, FIELD ASSISTANT  
 AND SANTO C. DIDONATO, C.T.A.,  
 SUPERVISING FIELD REPRESENTATIVE.

**TAX MAP**  
**TOWNSHIP OF HOWELL**

MONMOUTH COUNTY NEW JERSEY  
 SCALE: 1" = 100' DATE: 6-21-2005  
**CRAIG F. REMINGTON LAND SURVEYOR LIC. NO. 23924**

REMINGTON, VERNICK & VENA ENGINEERS  
 9 ALLEN STREET, TOMS RIVER, N.J. 08753  
 (732) 286-9220, FAX (732) 505-8416  
 WEB SITE ADDRESS: WWW.RVE.COM

REVISED BY REMINGTON AND VERNICK ENGINEERS - 5-22-2008 - 1321T062  
 PART OF KNOB HILL ESTATES  
 PART OF OLD PLATE 57