

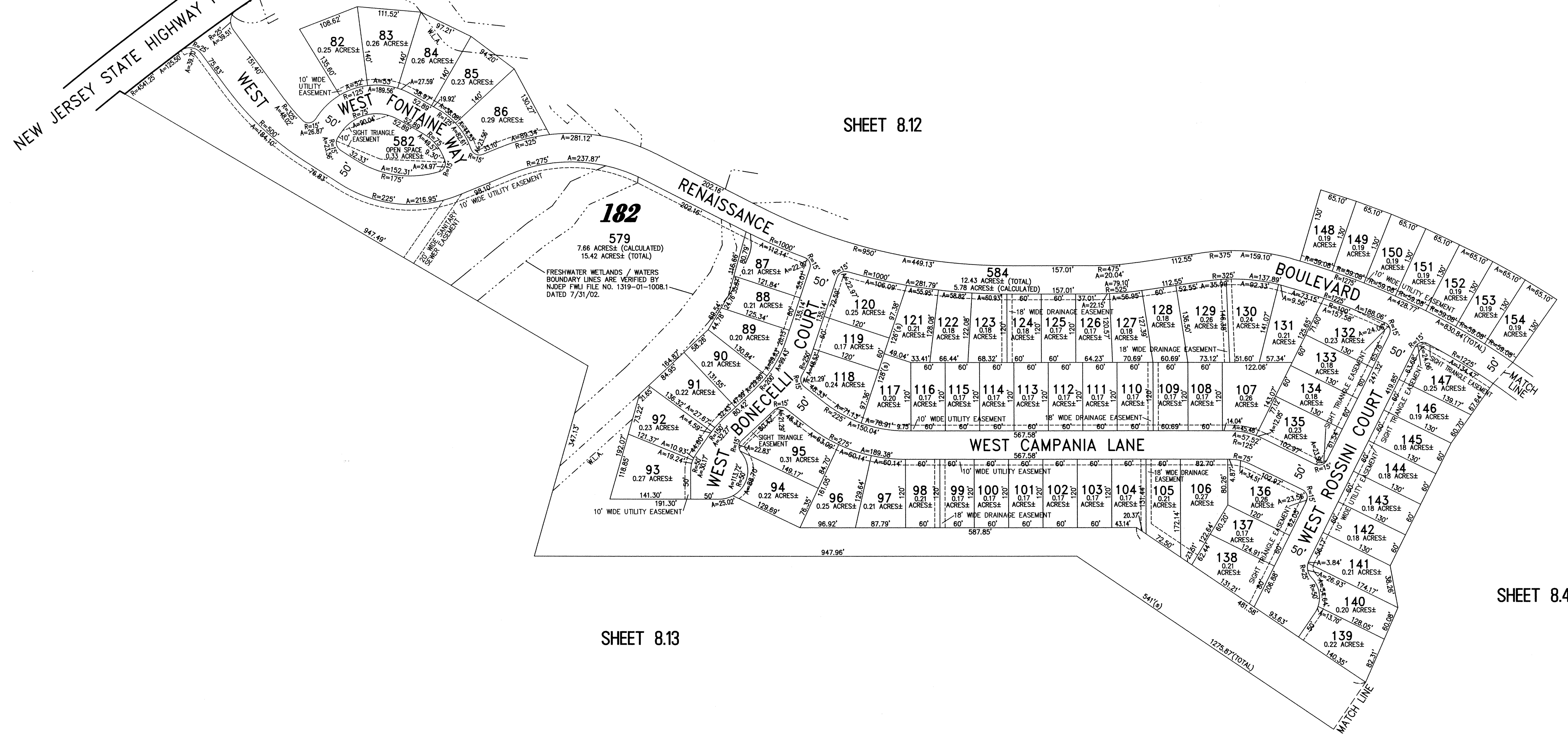
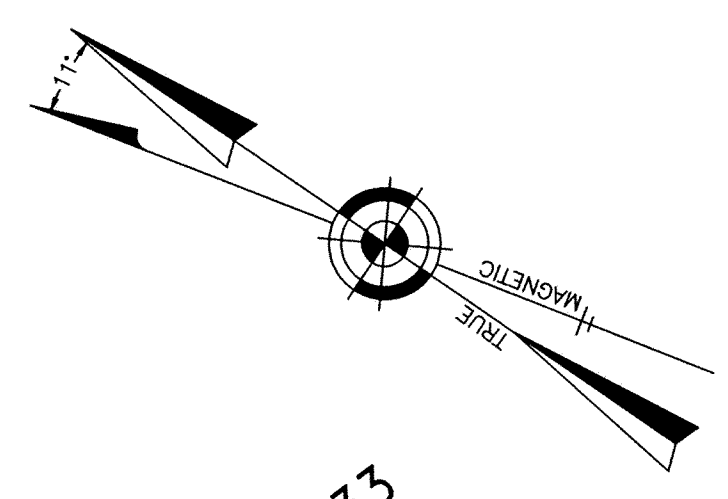
SHEET 8.04

SHEET 8.12

SHEET 8.44

SHEET 8.13

NEW JERSEY STATE HIGHWAY ROUTE No. 33



182  
579  
7.66 ACRES± (CALCULATED)  
15.42 ACRES± (TOTAL)  
FRESHWATER WETLANDS / WATERS  
BOUNDARY LINES ARE VERIFIED BY  
NDEP FWL FILE NO. 1319-01-1008.1  
DATED 7/31/02.

584  
12.43 ACRES± (TOTAL)  
5.78 ACRES± (CALCULATED)

### TAX MAP TOWNSHIP OF HOWELL

MONMOUTH COUNTY NEW JERSEY  
SCALE: 1" = 100' DATE: 6-21-2005

CRAIG F. REMINGTON LAND SURVEYOR LIC. NO. 23924

NEW JERSEY DEPARTMENT OF THE TREASURY  
DIVISION OF TAXATION  
PROPERTY ADMINISTRATION  
APPROVED AS A TAX MAP PURSUANT TO THE AUTHORITY OF  
NJLSA, 2004-10-10-0094  
FOR THE DIRECTOR, DIVISION OF TAXATION  
THOMAS F. REILLY, CHIEF, LEGAL COUNSEL, FIELD ASSISTANCE C.T.A.  
Santo Calabrese C.T.A.  
SAINTO G. DIDONATO, SUPERVISING FIELD REPRESENTATIVE C.T.A.  
DATE: SEP 15 2005 SERIAL NO. 941

REMINGTON, VERNICK & VENA ENGINEERS  
24 GA 28003300  
9 ALLEN STREET, TOMS RIVER, NJ 08753  
(732) 296-9220, FAX (732) 505-8446  
WEB SITE ADDRESS: WWW.RVVE.COM

COLTS NECK CROSSING AT HOWELL  
SHEET PAGES 2-4  
PART OF OLD PLATES 64 & 69