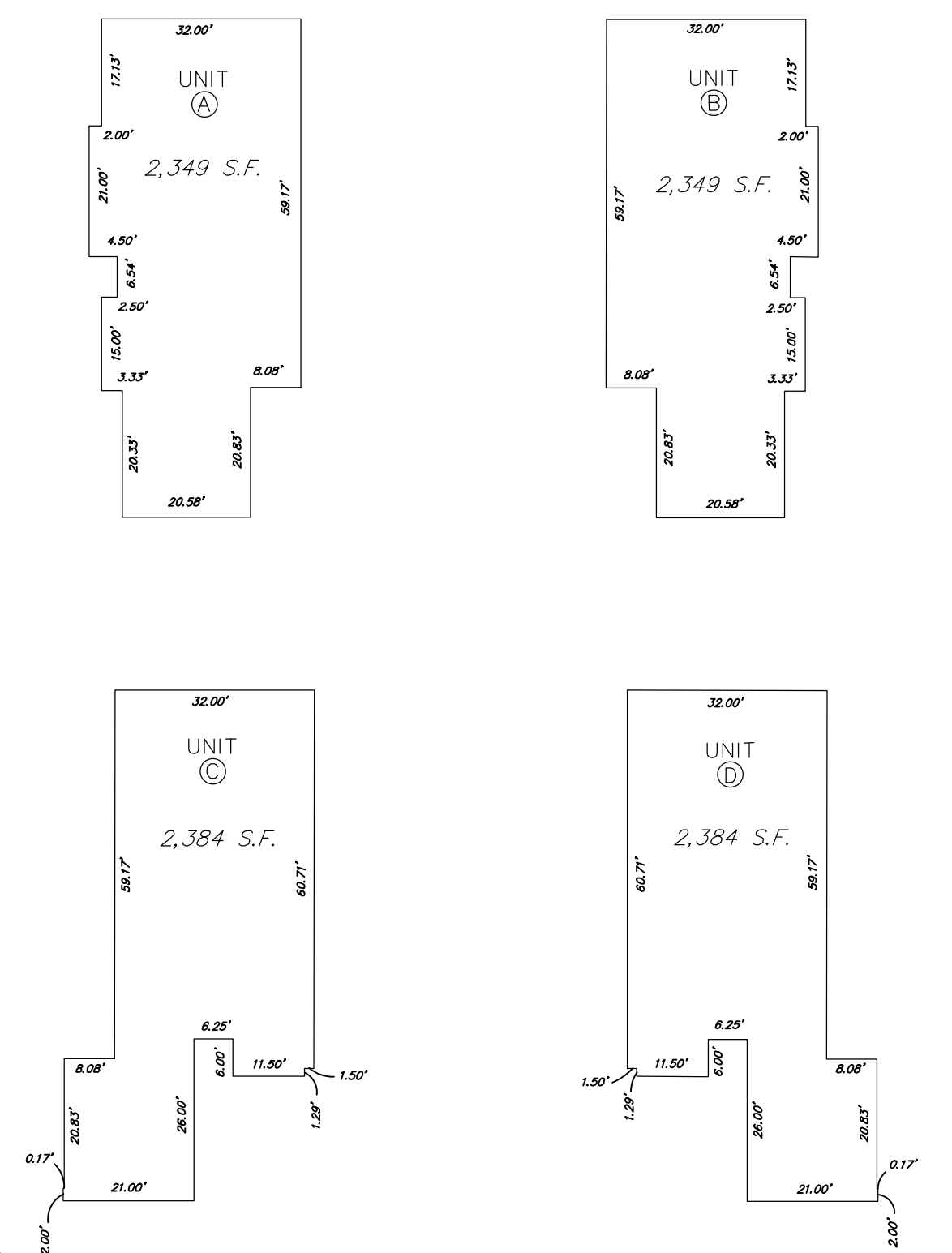
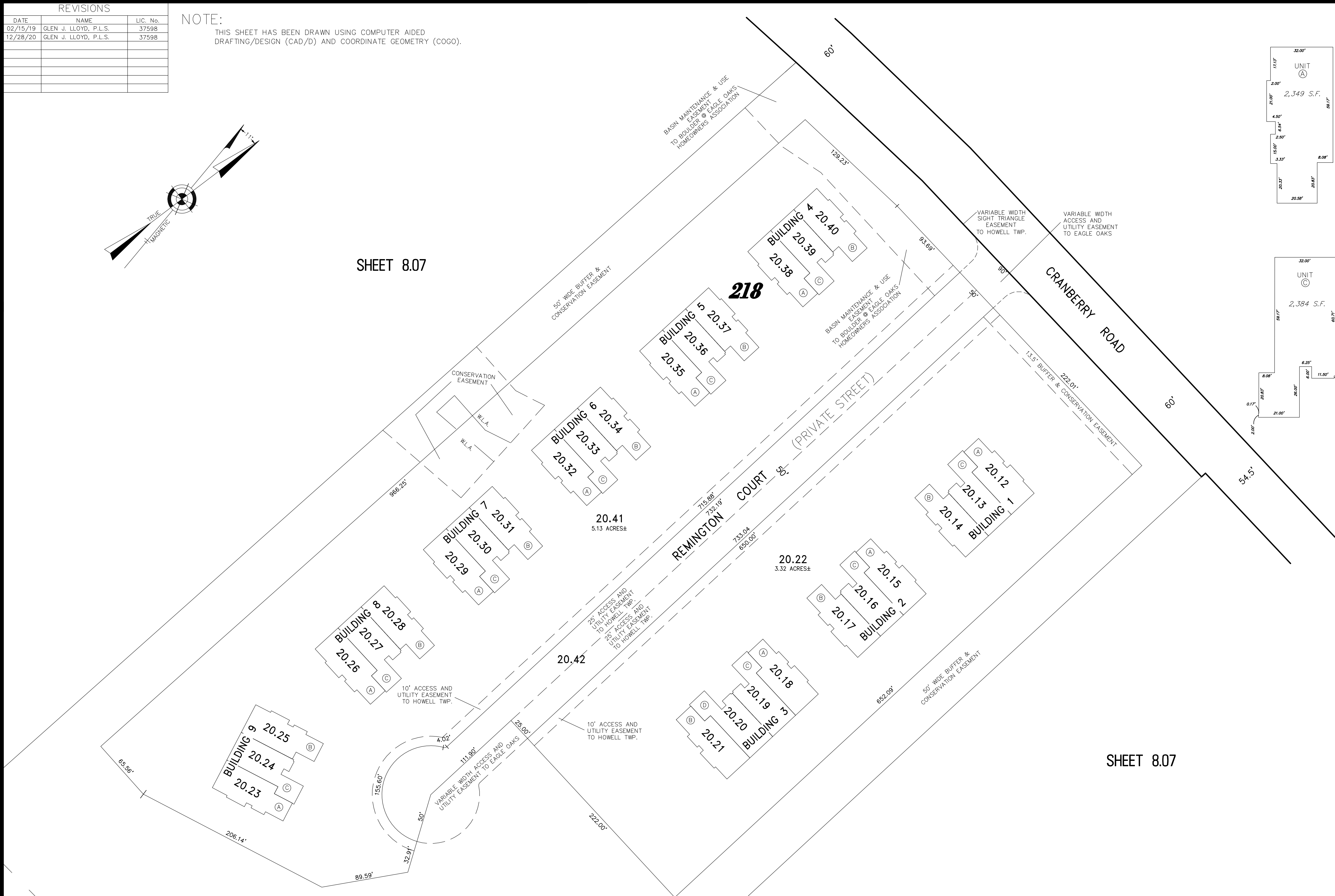
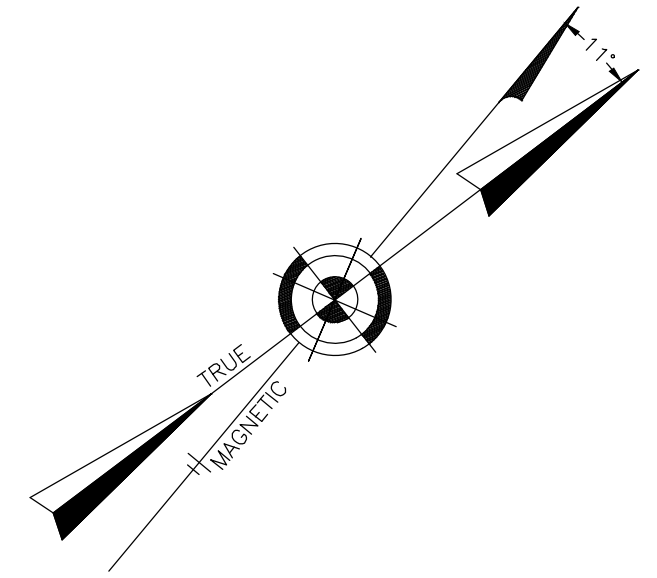


REVISIONS		
DATE	NAME	LIC. No.
02/15/19	GLEN J. LLOYD, P.L.S.	37598
12/28/20	GLEN J. LLOYD, P.L.S.	37598

NOTE:
THIS SHEET HAS BEEN DRAWN USING COMPUTER AIDED
DRAFTING/DESIGN (CAD/D) AND COORDINATE GEOMETRY (COGO).



UNIT DETAIL
NOT TO SCALE

SHEET 8.07

SHEET 8.07

SHEET 8.07

TAX MAP
TOWNSHIP OF HOWELL

MONMOUTH COUNTY NEW JERSEY
SCALE: 1" = 60' DATE: 02/15/2016

GLEN J. LLOYD, P.L.S. LAND SURVEYOR LIC. NO. GS 37598

MASER CONSULTING P.A. 24 GA 27986500
331 NEWMAN SPRINGS ROAD, SUITE 203, RED BANK, N.J. 07701
(732) 383-1950, FAX (732) 383-1984
WEB SITE ADDRESS: WWW.MASERCONSULTING.COM