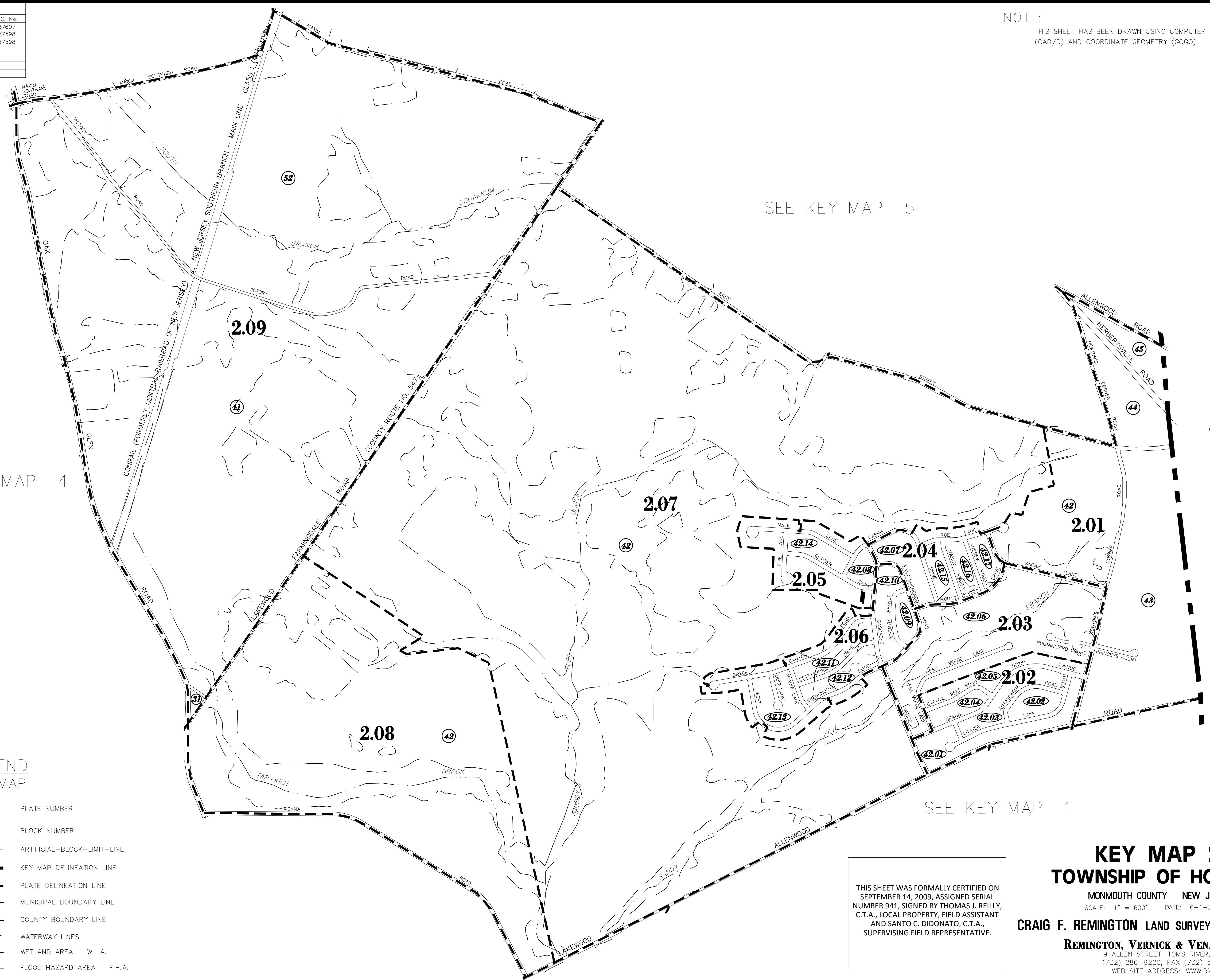
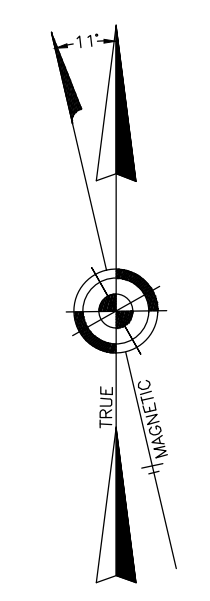


KEY MAP 2

REVISIONS		
DATE	NAME	LIC. No.
08/17/12	RICHARD A. SCHULZ, P.L.S.	37607
02/15/16	GLEN J. LLOYD, P.L.S.	37598
12/15/17	GLEN J. LLOYD, P.L.S.	37598

NOTE:
THIS SHEET HAS BEEN DRAWN USING COMPUTER AIDED DRAFTING/DESIGN (CAD/D) AND COORDINATE GEOMETRY (GOGO).



SEE KEY MAP 4

SEE KEY MAP 5

SEE KEY MAP 1

TOWNSHIP OF WALL
COUNTY OF MONMOUTH

LEGEND KEY MAP

- 2.01** PLATE NUMBER
- 45** BLOCK NUMBER
- ARTIFICIAL-BLOCK-LIMIT-LINE
- KEY MAP DELINEATION LINE
- PLATE DELINEATION LINE
- MUNICIPAL BOUNDARY LINE
- COUNTY BOUNDARY LINE
- WATERWAY LINES
- WETLAND AREA - W.L.A.
- FLOOD HAZARD AREA - F.H.A.

THIS SHEET WAS FORMALLY CERTIFIED ON SEPTEMBER 14, 2009, ASSIGNED SERIAL NUMBER 941, SIGNED BY THOMAS J. REILLY, C.T.A., LOCAL PROPERTY, FIELD ASSISTANT AND SANTO C. DIDONATO, C.T.A., SUPERVISING FIELD REPRESENTATIVE.

KEY MAP 2
TOWNSHIP OF HOWELL
MONMOUTH COUNTY NEW JERSEY
SCALE: 1" = 600' DATE: 6-1-2005
CRAIG F. REMINGTON LAND SURVEYOR LIC. NO. 23924
REMINGTON, VERNICK & VENA ENGINEERS
24 GA 28003300
9 ALLEN STREET, TOMS RIVER, N.J. 08753
(732) 286-9220, FAX (732) 505-8416
WEB SITE ADDRESS: WWW.RVE.COM

KEY MAP 2