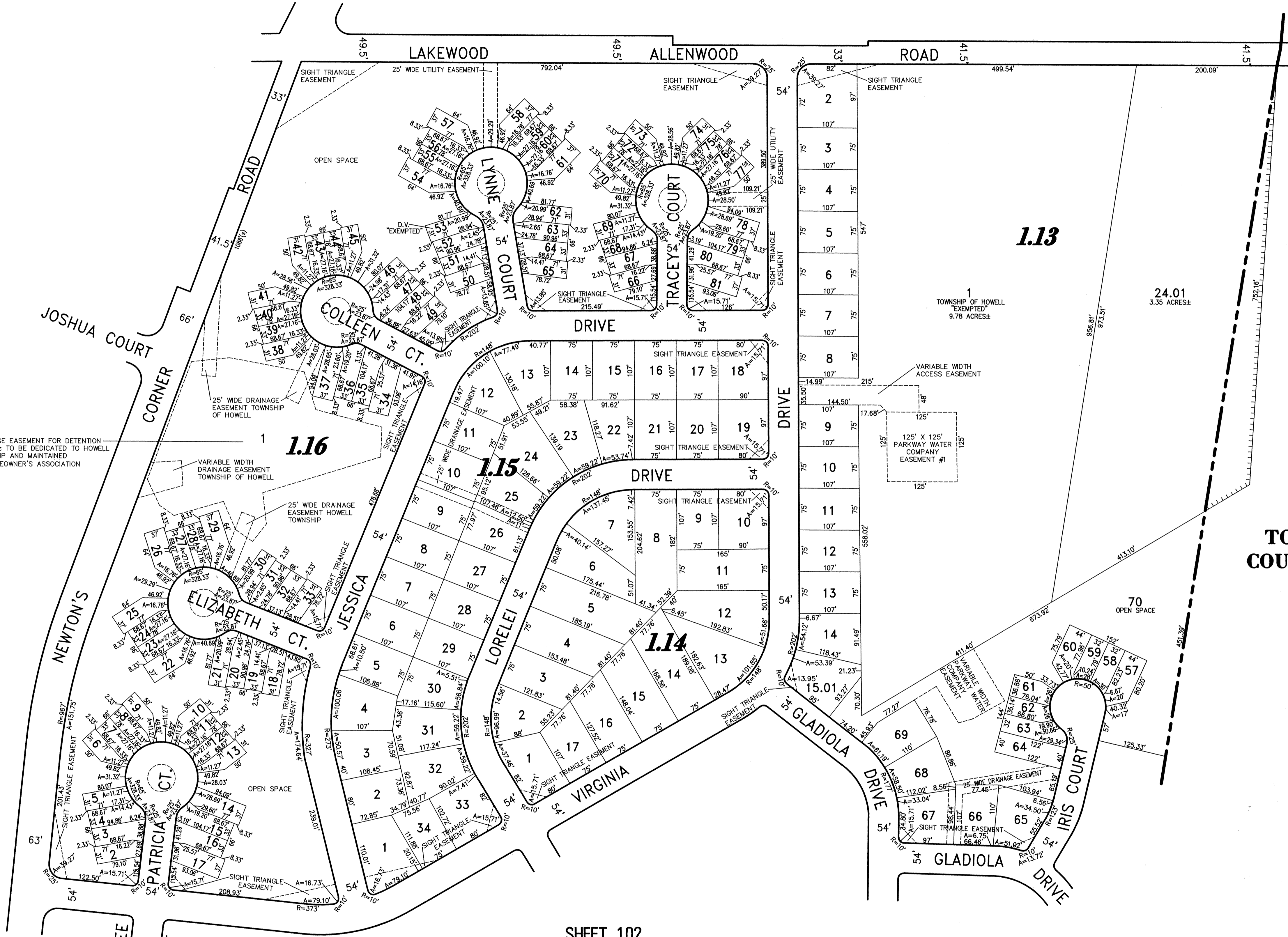
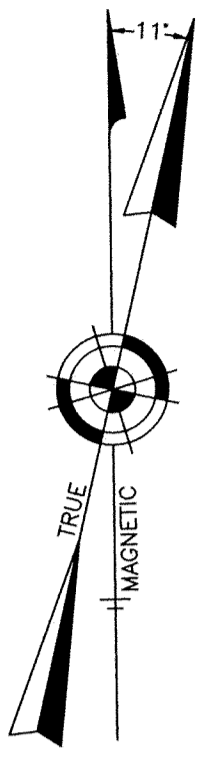


NOTE:
THIS SHEET HAS BEEN DRAWN USING COMPUTER AIDED DRAFTING/DESIGN (CAD/D) AND COORDINATE GEOMETRY (GOCO).

SHEET 2.01



SHEET 1.06

SHEET 1.02

TOWNSHIP OF WALL
COUNTY OF MONMOUTH

NEW JERSEY DEPARTMENT OF THE TREASURY
DIVISION OF TAXATION
PROPERTY ADMINISTRATION
APPROVED AS A TAX MAP PURSUANT TO THE AUTHORITY OF
N.J.S.A. 62:15 & 64:5-1
FOR THE QUESTIONED, CHANGING OF TAXATION
THOMAS J. REILLY, C.T.A. FIELD ASSISTANCE
SANTO C. DIDONATO, SUPERVISING FIELD REPRESENTATIVE
DATE: 02/14/2009 SERIAL NO. 944

TAX MAP
TOWNSHIP OF HOWELL
MONMOUTH COUNTY NEW JERSEY
SCALE: 1" = 100' DATE: 6-21-2005
CRAIG F. REMINGTON LAND SURVEYOR LIC. NO. 23924

REMINGTON, VERNICK & VENA ENGINEERS
24 GA 28003300
9 ALLEN STREET, TOMS RIVER, N.J. 08753
(732) 286-9220, FAX (732) 505-8446
WEB SITE ADDRESS: WWW.RVVE.COM

RAMTOWN MANOR
PART OF OLD PLATE 11