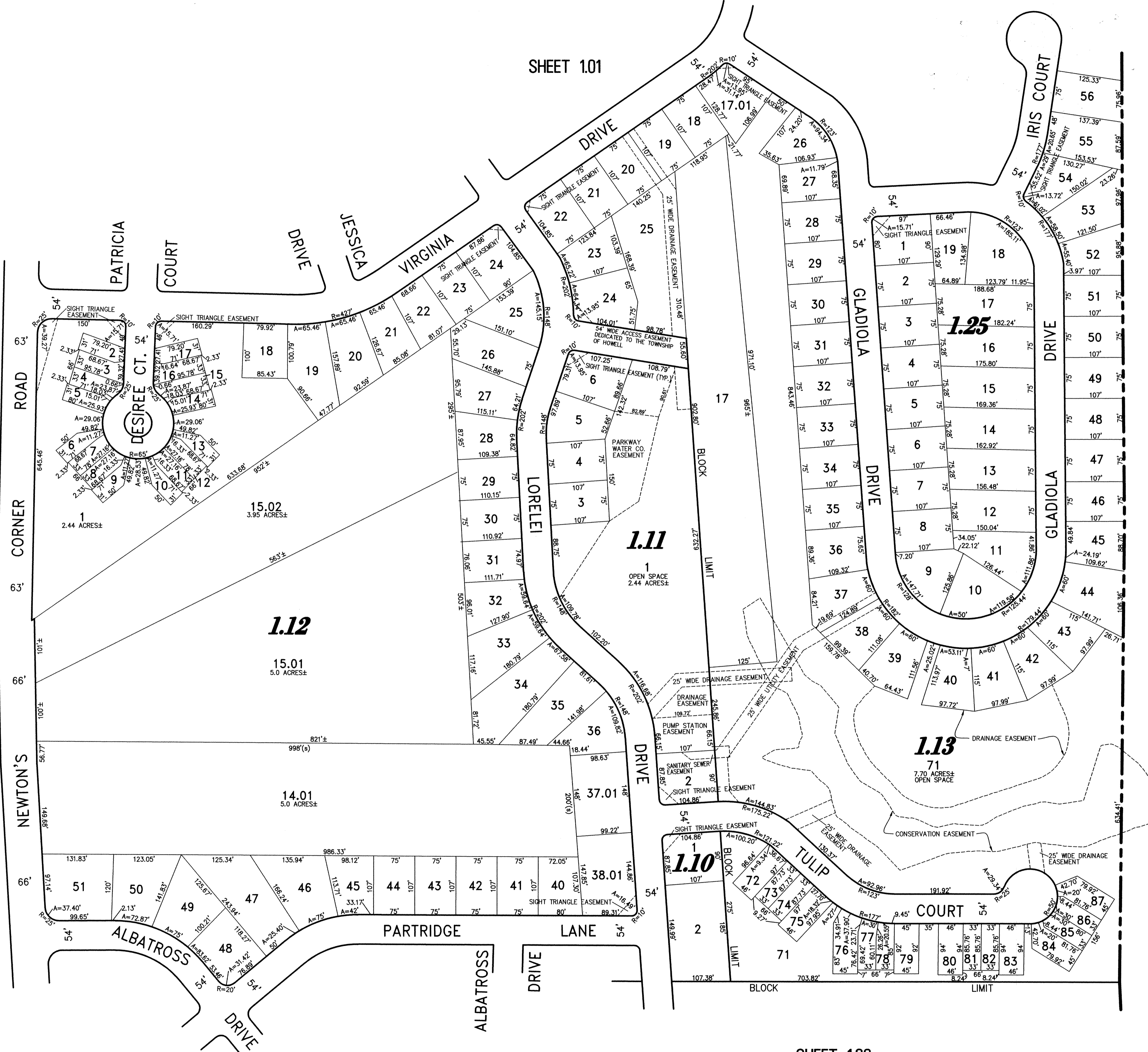


NOTE:  
THIS SHEET HAS BEEN DRAWN USING COMPUTER AIDED DRAFTING/DESIGN  
(CAD/D) AND COORDINATE GEOMETRY (GOCO).



SHEET 101



SHEET 106

RAMTOWN - GREENVILLE

SHEET 107

NEWTON'S ROAD

SHEET 108

SHEET 103

TOWNSHIP OF WALL  
COUNTY OF MONMOUTH

NEW JERSEY DEPARTMENT OF THE TREASURY  
DIVISION OF TAXATION  
PROPERTY ADMINISTRATION  
APPROVED AS A TAX MAP PURSUANT TO THE AUTHORITY OF  
FOR THE  
THOMAS J. BELLETTI, C.T.A.  
SANTA C. DONATO, SUPERVISING FIELD REPRESENTATIVE  
DATE: SEP 14 2009 SERIAL NO. 941

TAX MAP  
TOWNSHIP OF HOWELL

MONMOUTH COUNTY NEW JERSEY  
SCALE: 1" = 100' DATE: 6-21-2005

CRAIG F. REMINGTON LAND SURVEYOR LIC. NO. 23924

RVV  
REMINGTON, VERNICK & VENA ENGINEERS  
24 GA 28003300  
9 ALLEN STREET, TOMS RIVER, N.J. 08753  
(732) 296-9220, FAX (732) 505-846  
WEB SITE ADDRESS: WWW.RVVE.COM

REVISED BY REMINGTON AND VERNICK ENGINEERS - 7-16-2008  
REVISED BY REMINGTON AND VERNICK ENGINEERS - 5-22-2008 - 13211062

RAMTOWN MANOR  
PART OF OLD PLATE 11