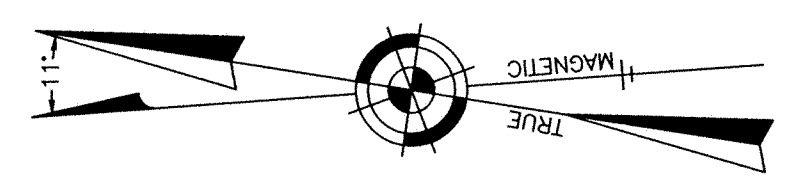


TOWNSHIP OF WALL
COUNTY OF MONMOUTH

SHEET 1.04

NOTE:
THIS SHEET HAS BEEN DRAWN USING COMPUTER AIDED DRAFTING/DESIGN
(CADD) AND COORDINATE GEOMETRY (GOGO).



NEW JERSEY DEPARTMENT OF THE TREASURY
DIVISION OF TAXATION
PROPERTY ADMINISTRATION
APPROVED AS A TAX MAP PURSUANT TO THE AUTHORITY OF
N.J.S.A. 52:27-10
FOR THE DIRECTOR, DIVISION OF TAXATION
G.T.A.
THOMAS J. REILLY, CHIEF, LOCAL TAX FIELD ASSISTANCE
SANTO C. DIDONATO, SUPERVISING FIELD REPRESENTATIVE
DATE: SEP 14 2008 SERIAL NO. 041

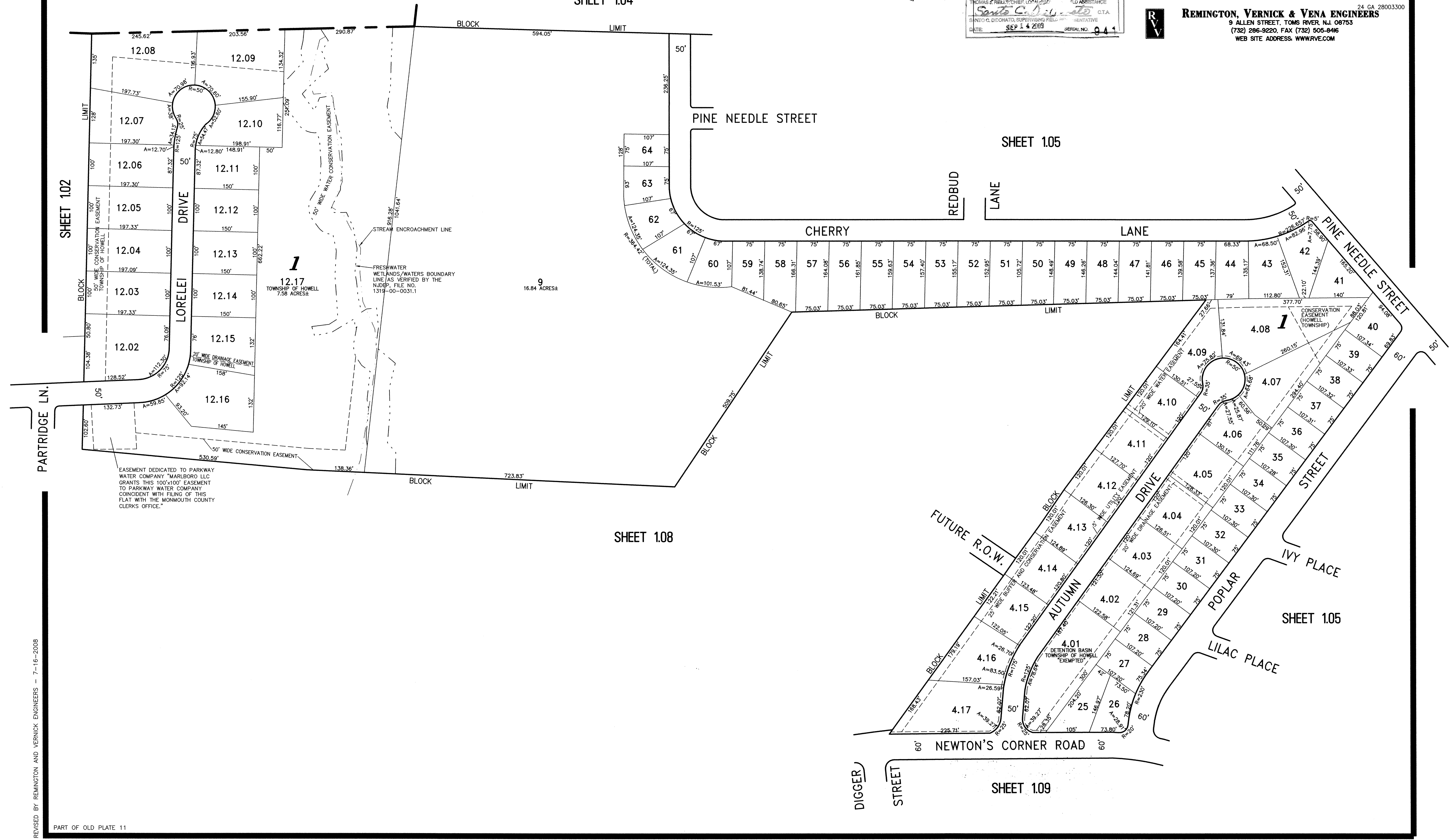
TAX MAP
TOWNSHIP OF HOWELL

MONMOUTH COUNTY NEW JERSEY
SCALE: 1" = 100' DATE: 6-21-2005

CRAIG F. REMINGTON LAND SURVEYOR LIC. NO. 23924



24 GA 28003300
REMINGTON, VERNICK & VENA ENGINEERS
9 ALLEN STREET, TOMS RIVER, NJ 08753
(732) 286-9220, FAX (732) 505-8416
WEB SITE ADDRESS: WWW.RVVE.COM



REVISED BY REMINGTON AND VERNICK ENGINEERS - 7-16-2008

PART OF OLD PLATE 11