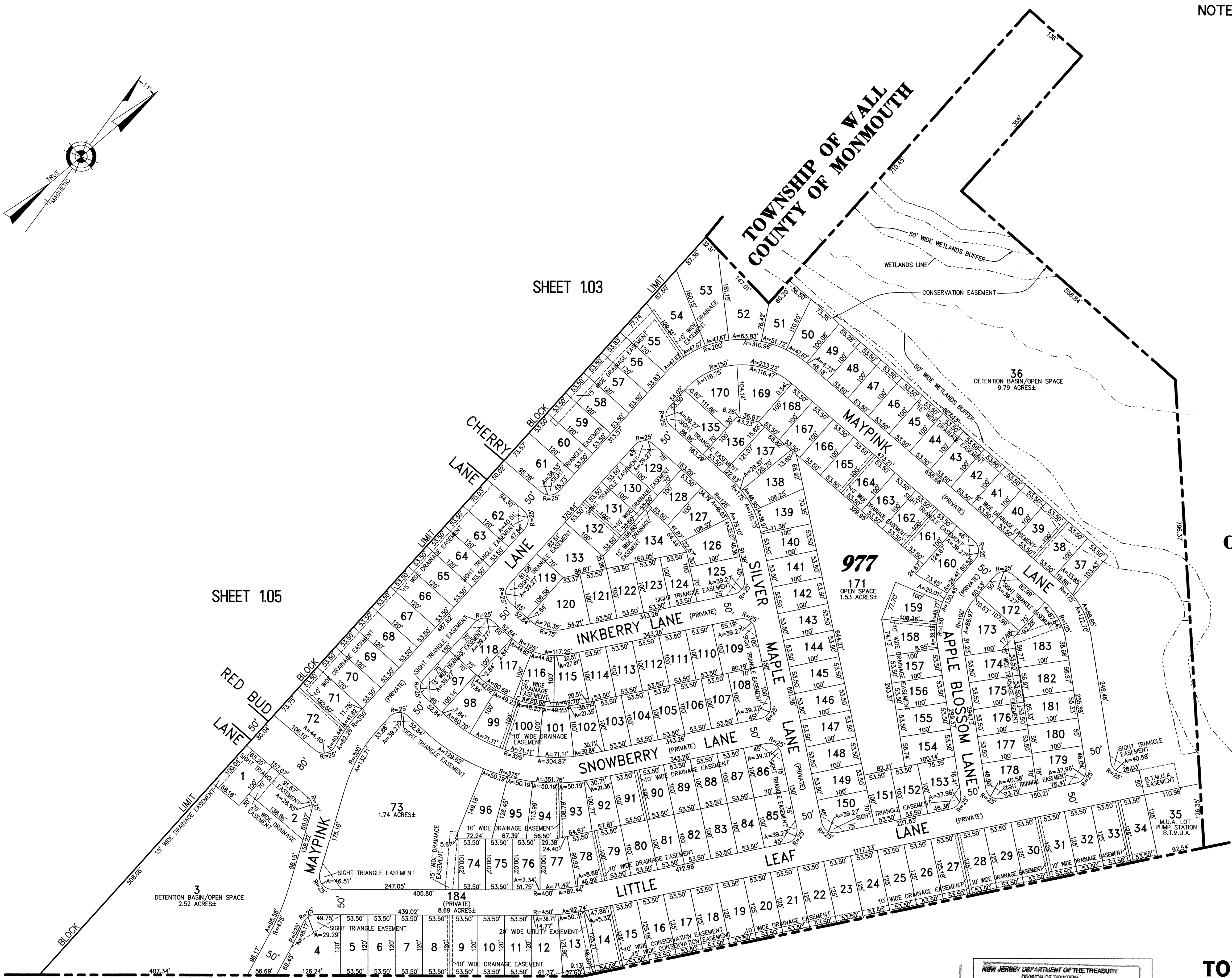
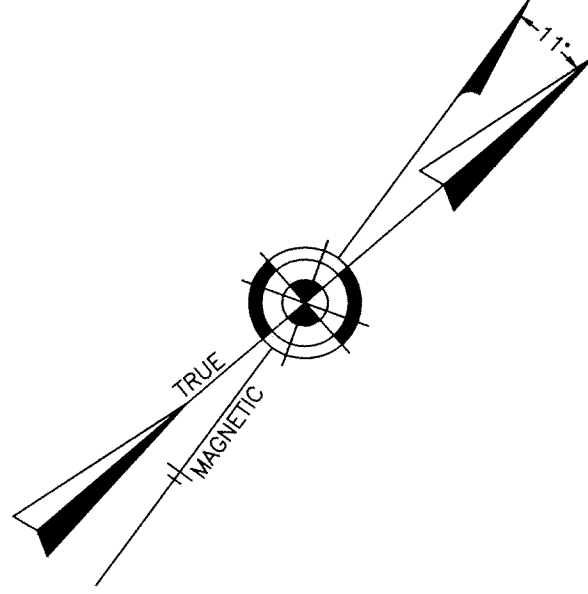


NOTE:
THIS SHEET HAS BEEN DRAWN USING COMPUTER AIDED DRAFTING/DESIGN (CAD/D) AND COORDINATE GEOMETRY (GOGO).



SHEET 103

SHEET 105

TOWNSHIP OF WALL
COUNTY OF MONMOUTH

TOWNSHIP OF WALL
COUNTY OF MONMOUTH

TOWNSHIP OF BRICK
COUNTY OF OCEAN

NEW JERSEY DEPARTMENT OF THE TREASURY
DIVISION OF TAXATION
PROPERTY ADMINISTRATION
APPROVED AS A TAX MAP PURSUANT TO THE AUTHORITY OF
N.J.S.A. 64:1-16 & 64:50-1
FOR THE DIRECTOR, DIVISION OF TAXATION
Thomas J. Kelly C.T.A.
Scott C. Vena C.S.A.
DATE: SEP 14 2005
9 4 1

TAX MAP TOWNSHIP OF HOWELL

MONMOUTH COUNTY NEW JERSEY
SCALE: 1" = 100' DATE: 6-21-2005
CRAIG F. REMINGTON LAND SURVEYOR LIC. NO. 23924

REMINGTON, VERNICK & VENA ENGINEERS
9 ALLEN STREET, TOMS RIVER, N.J. 08753
(732) 296-9220, FAX (732) 505-8446
WEB SITE ADDRESS: WWW.RVVE.COM

PART OF LAUREL MANOR
PART OF OLD PLATE 2