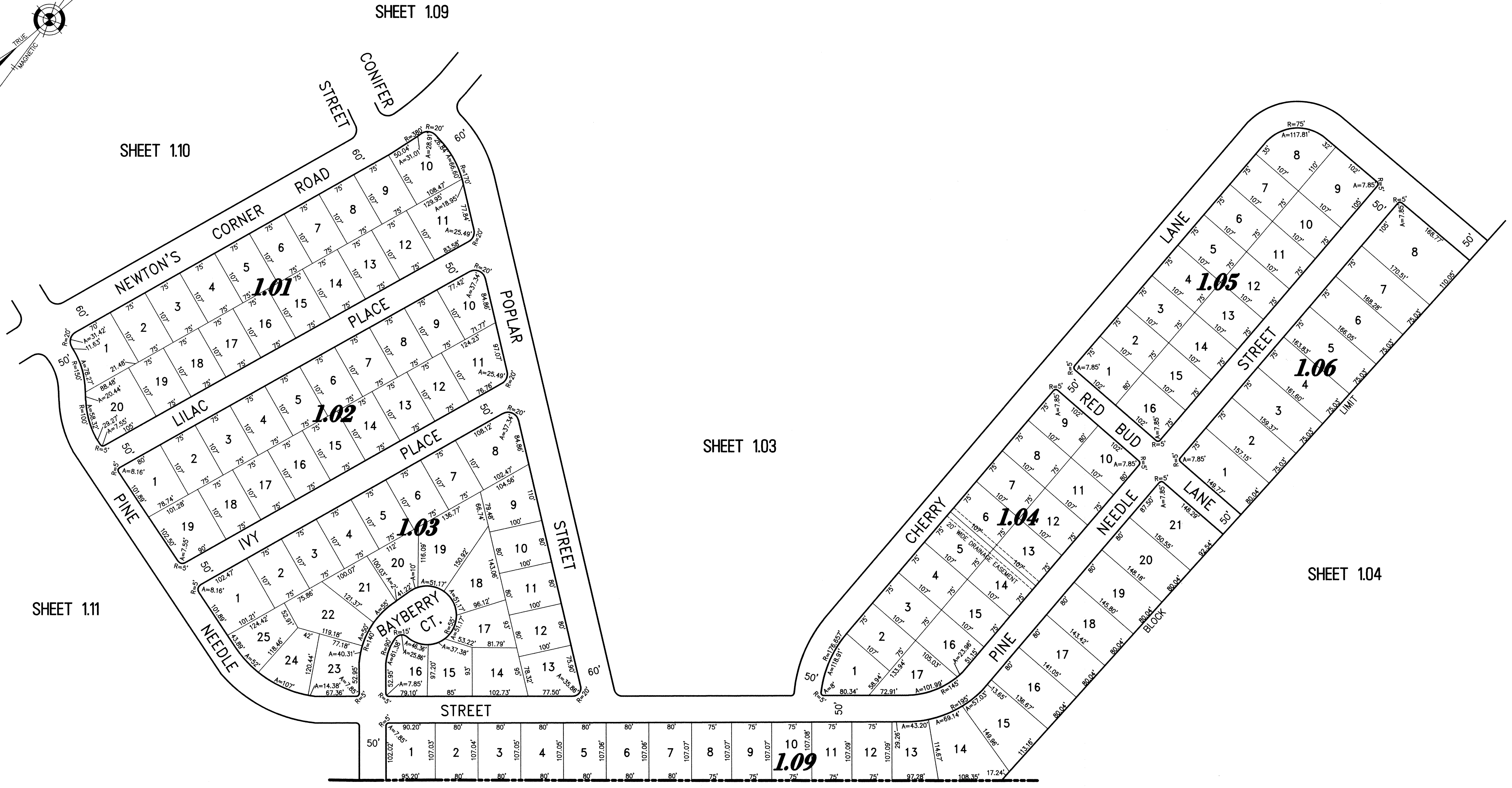
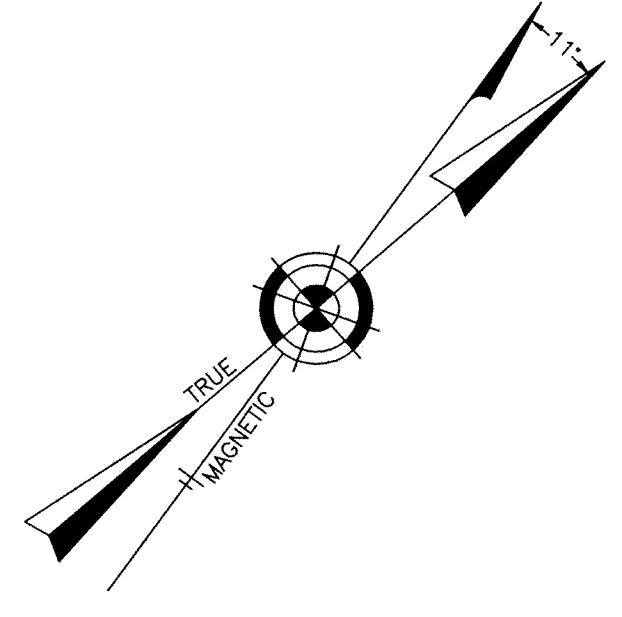


NOTE:
THIS SHEET HAS BEEN DRAWN USING COMPUTER AIDED DRAFTING/DESIGN
(CAD/D) AND COORDINATE GEOMETRY (GOGO).



TOWNSHIP OF BRICK
COUNTY OF OCEAN

TAX MAP
TOWNSHIP OF HOWELL
MONMOUTH COUNTY NEW JERSEY

SCALE: 1" = 100' DATE: 6-21-2005
CRAIG F. REMINGTON LAND SURVEYOR LIC. NO. 23924

NEW JERSEY DEPARTMENT OF THE TREASURY
DIVISION OF TAXATION
PROPERTY ADMINISTRATION
APPROVED AS A TAX MAP PURSUANT TO THE AUTHORITY OF
N.J.S.A. 54:1-18 & 54:1-9
FOR THE DIRECTOR, DIVISION OF TAXATION
THOMAS J. REILLY, CHIEF LOCAL PROPERTY FIELD ASSISTANCE C.T.A.
SANTO C. DIDONATO, SUPERVISING FIELD REPRESENTATIVE C.T.A.
DATE: SEPT 4 2005 SERIAL NO. 041

REMINGTON, VERNICK & VENA ENGINEERS
24 GA. 28003300
9 ALLEN STREET, TOMS RIVER, N.J. 08753
(732) 286-9220, FAX (732) 505-8416
WEB SITE ADDRESS: WWW.RVVE.COM

PART OF LAUREL MANOR
PART OF OLD PLATE 2