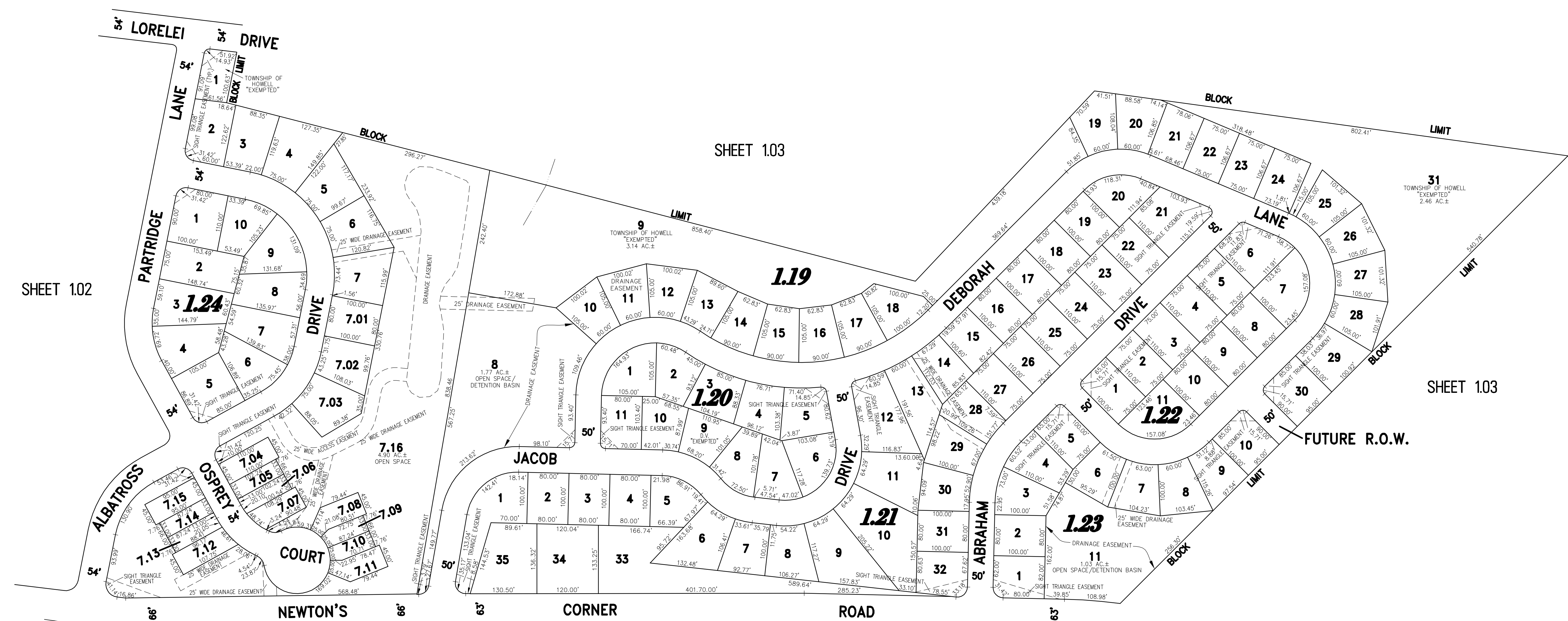
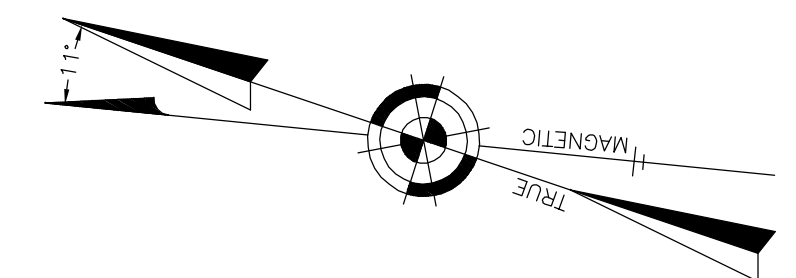


NOTE:  
THIS SHEET HAS BEEN DRAWN USING COMPUTER AIDED DRAFTING/DESIGN (CAD/D) AND COORDINATE GEOMETRY (COGO).

REVISIONS		
DATE	NAME	LIC. No.
05/24/11	RICHARD A. SCHULZ, P.L.S.	37607



SHEET 1.02

SHEET 1.03

SHEET 1.03

SHEET 1.07

SHEET 1.09

REVISED BY REMINGTON AND VERNICK ENGINEERS - 7-16-2008

BRENTWOOD ESTATES & PART OF BRIARCREST EAST  
PART OF OLD PLATES 2 & 11

THIS SHEET WAS FORMALLY CERTIFIED ON  
SEPTEMBER 14, 2009,  
ASSIGNED SERIAL NUMBER 941,  
SIGNED BY THOMAS J. REILLY, C.T.A.,  
LOCAL PROPERTY FIELD ASSISTANT  
AND SANTO C. DIDONATO, C.T.A.,  
SUPERVISING FIELD REPRESENTATIVE.

**TAX MAP**  
**TOWNSHIP OF HOWELL**  
MONMOUTH COUNTY NEW JERSEY  
SCALE: 1" = 100' DATE: 6-21-2005  
**CRAIG F. REMINGTON LAND SURVEYOR LIC. NO. 23924**  
**REMINGTON, VERNICK & VENA ENGINEERS**  
24 GA. 28003300  
9 ALLEN STREET, TOMS RIVER, N.J. 08753  
(732) 286-9220, FAX (732) 505-8416  
WEB SITE ADDRESS: WWW.RVVE.COM