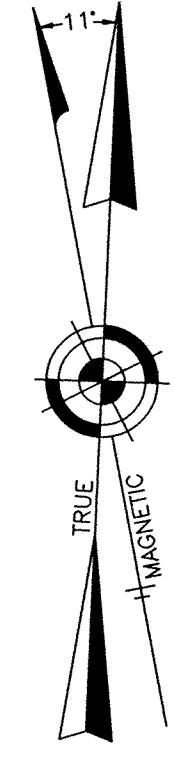


NOTE:
THIS SHEET HAS BEEN DRAWN USING COMPUTER AIDED DRAFTING/DESIGN (CADD) AND COORDINATE GEOMETRY (GOCO).



SHEET 114

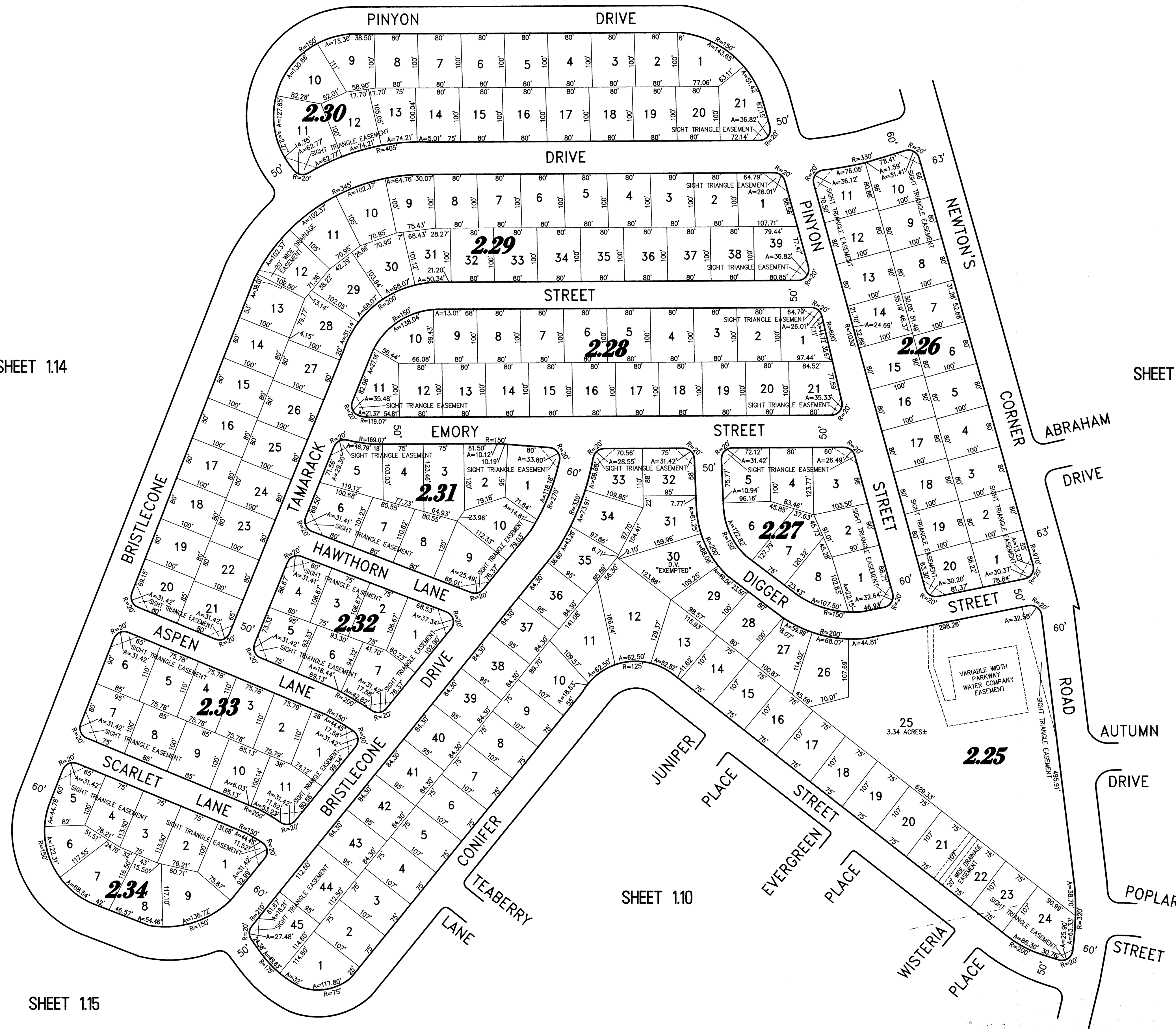
SHEET 108

SHEET 103

SHEET 115

SHEET 110

PART OF LAUREL MANOR
PART OF PLATES 2 & 11



NEW JERSEY DEPARTMENT OF THE TREASURY
DIVISION OF TAXATION
PROPERTY ADMINISTRATION
APPROVED AS A TAX MAP PRESENTED TO THE AUTHORITY OF
NJRA IN ACCORDANCE WITH
FOR THE DEPARTMENT OF TAXATION
THOMAS S. BELL, CHIEF OF FIELD ASSISTANCE C.T.A.
Santo C. DiDonato, SUPERVISING FIELD REPRESENTATIVE C.T.A.
DATE: SEP 14 2009 SERIAL NO. 941

TAX MAP
TOWNSHIP OF HOWELL

MONMOUTH COUNTY NEW JERSEY
SCALE: 1" = 100' DATE: 6-21-2005

CRAIG F. REMINGTON LAND SURVEYOR LIC. NO. 23924

24 GA 28003300
REMINGTON, VERNICK & VENA ENGINEERS
9 ALLEN STREET, TOMS RIVER, NJ 08753
(732) 286-9220, FAX (732) 505-8446
WEB SITE ADDRESS: WWW.RVVE.COM