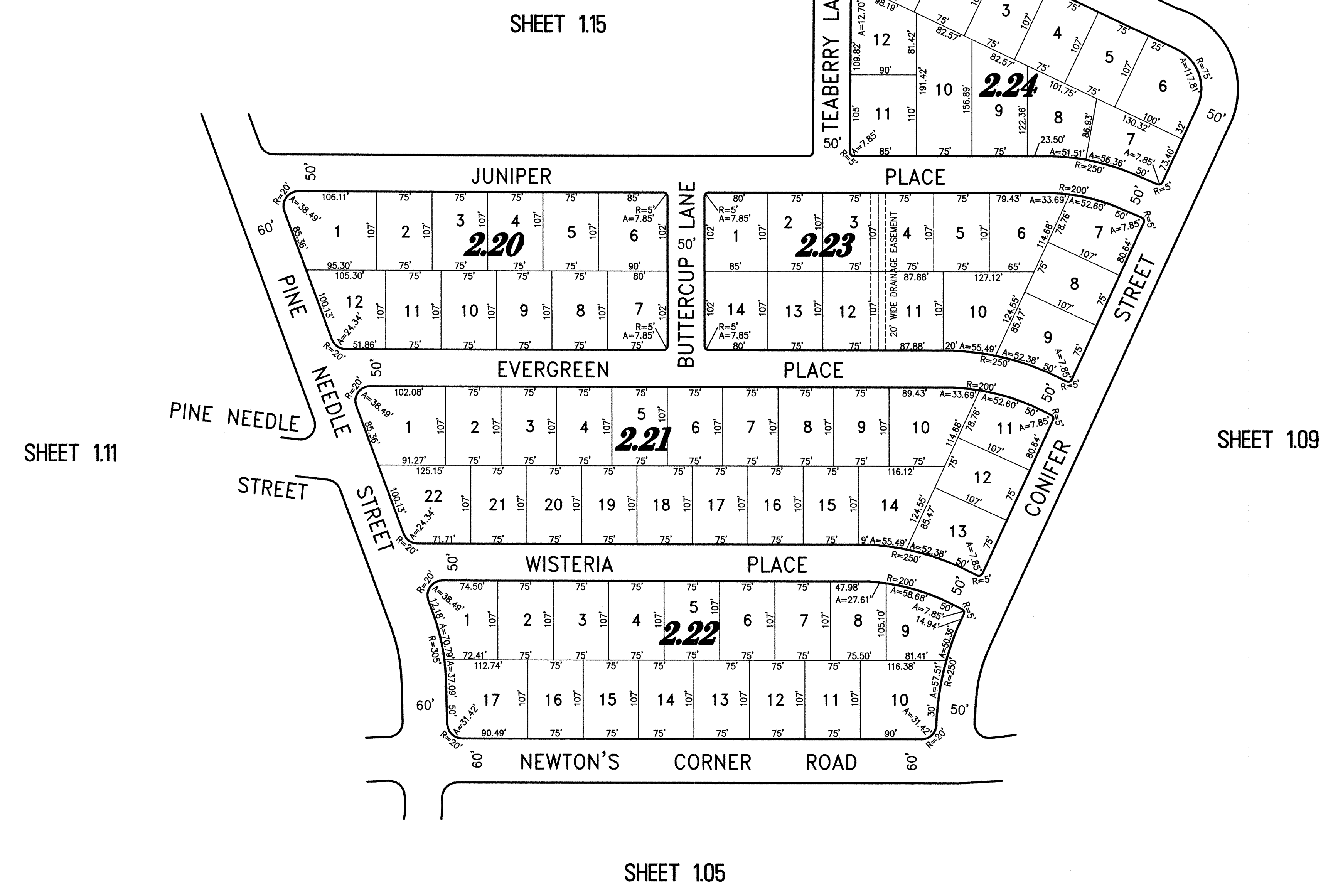
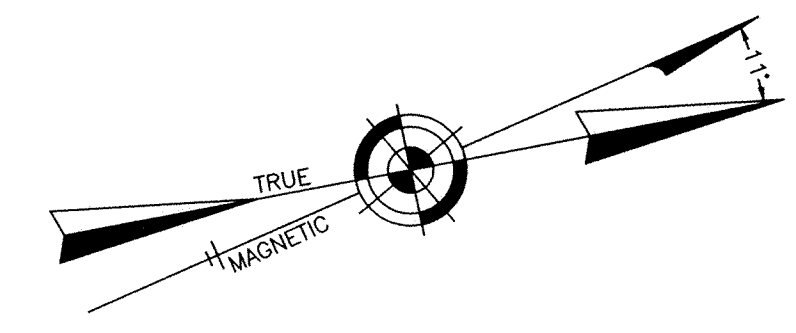


NOTE:
THIS SHEET HAS BEEN DRAWN USING COMPUTER AIDED DRAFTING/DESIGN
(CAD/D) AND COORDINATE GEOMETRY (GOGO).



REVISED BY REMINGTON AND VERNICK ENGINEERS - 7-16-2008

PART OF LAUREL MANOR
PART OF OLD PLATE 2

NEW JERSEY DEPARTMENT OF THE TREASURY
DIVISION OF TAXATION
PROPERTY ADMINISTRATION
APPROVED AS A TAX MAP PURSUANT TO THE AUTHORITY OF
N.J.S.A. 54:1-16 & 54:1-17
FOR THE DIRECTOR, DIVISION OF TAXATION
THOMAS C. D'ONOFRIO, SUPERVISING FIELD REPRESENTATIVE
DATE: 5/4/08 SERIAL NO. 94

TAX MAP
TOWNSHIP OF HOWELL
MONMOUTH COUNTY NEW JERSEY
SCALE: 1" = 100' DATE: 6-21-2005
CRAIG F. REMINGTON LAND SURVEYOR LIC. NO. 23924
REMINGTON, VERNICK & VENA ENGINEERS
24 GA 28003300
9 ALLEN STREET, TOMS RIVER, N.J. 08753
(732) 266-9220, FAX (732) 505-8446
WEB SITE ADDRESS: WWW.RVE.COM