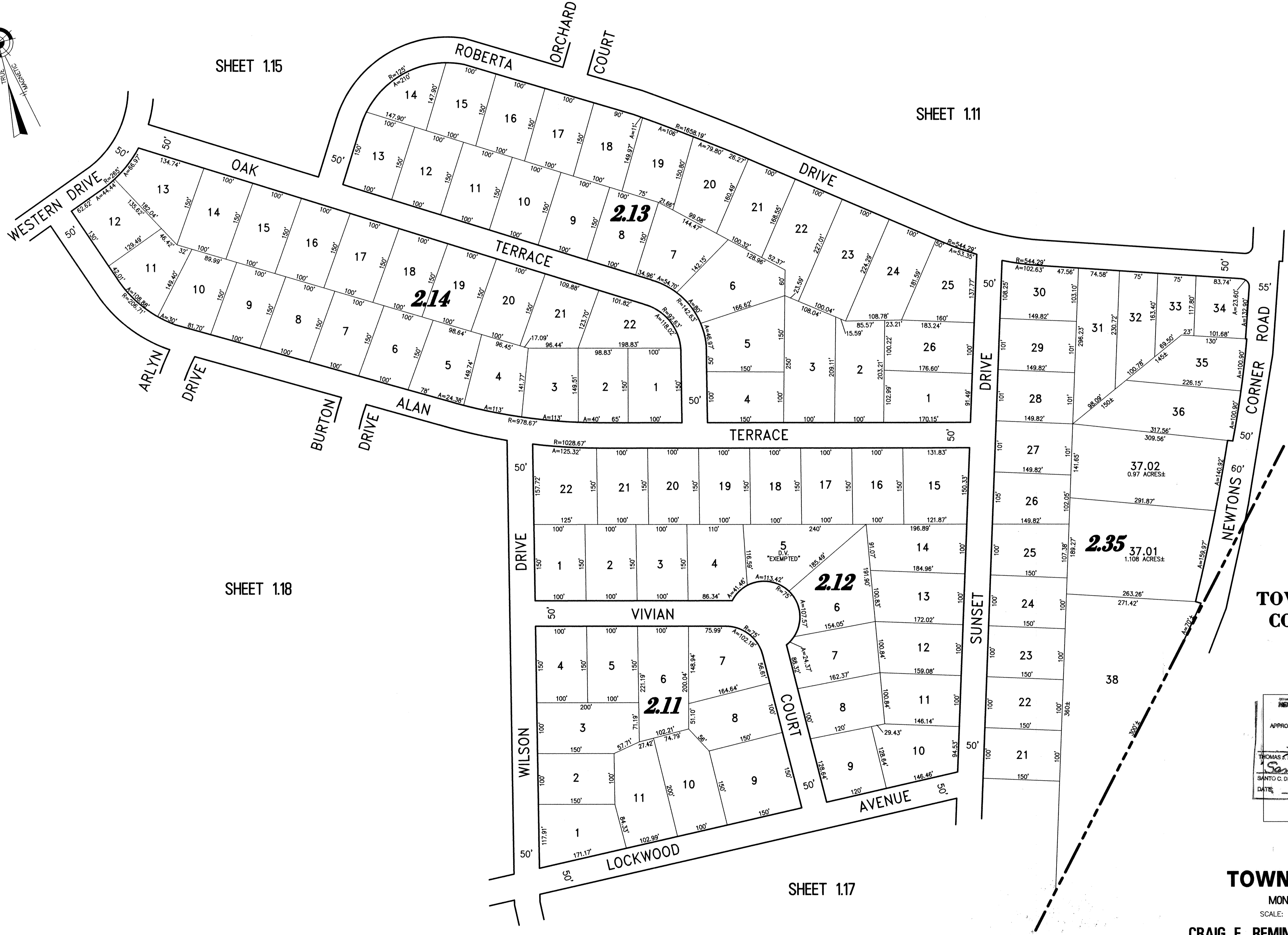
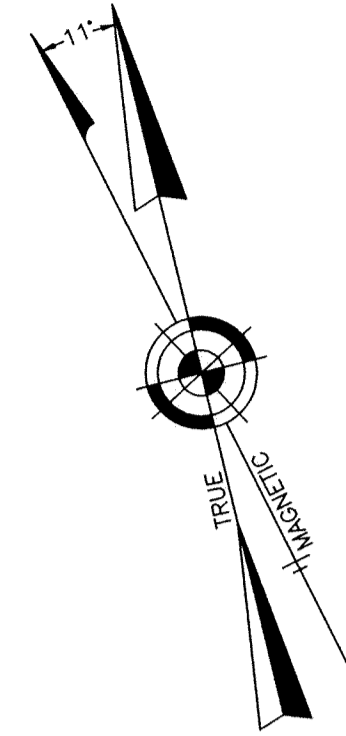


NOTE:
THIS SHEET HAS BEEN DRAWN USING COMPUTER AIDED DRAFTING/DESIGN
(CAD/D) AND COORDINATE GEOMETRY (GOGO).



SHEET 1.15

SHEET 1.11

SHEET 1.18

SHEET 1.17

TOWNSHIP OF BRICK
COUNTY OF OCEAN

NEW JERSEY DEPARTMENT OF THE TREASURY
DIVISION OF TAXATION
PROPERTY ADMINISTRATION
APPROVED AS A TAX MAP PURSUANT TO THE AUTHORITY OF
N.J.S.A. 54:11A-8(a)
FOR THE DIRECTOR, BUREAU OF TAXATION
THOMAS J. RYAN, CHIEF, PROPERTY FIELD ASSISTANCE C.T.A.
Santo C. DiDonato C.T.A.
SANTO C. DI DONATO, SUPERVISOR FIELD REPRESENTATIVE
DATE: SEP 14 2009 SERIAL NO. 941

TAX MAP
TOWNSHIP OF HOWELL
MONMOUTH COUNTY NEW JERSEY

SCALE: 1" = 100' DATE: 6-21-2005

CRAIG F. REMINGTON LAND SURVEYOR LIC. NO. 23924

24 GA 28003300
REMINGTON, VERNICK & VENA ENGINEERS
9 ALLEN STREET, TOMS RIVER, N.J. 08753
(732) 266-9220, FAX (732) 505-6446
WEB SITE ADDRESS: WWW.RVVE.COM

PART OF PARKWAY PINES
PART OF OLD PLATES 1 & 2