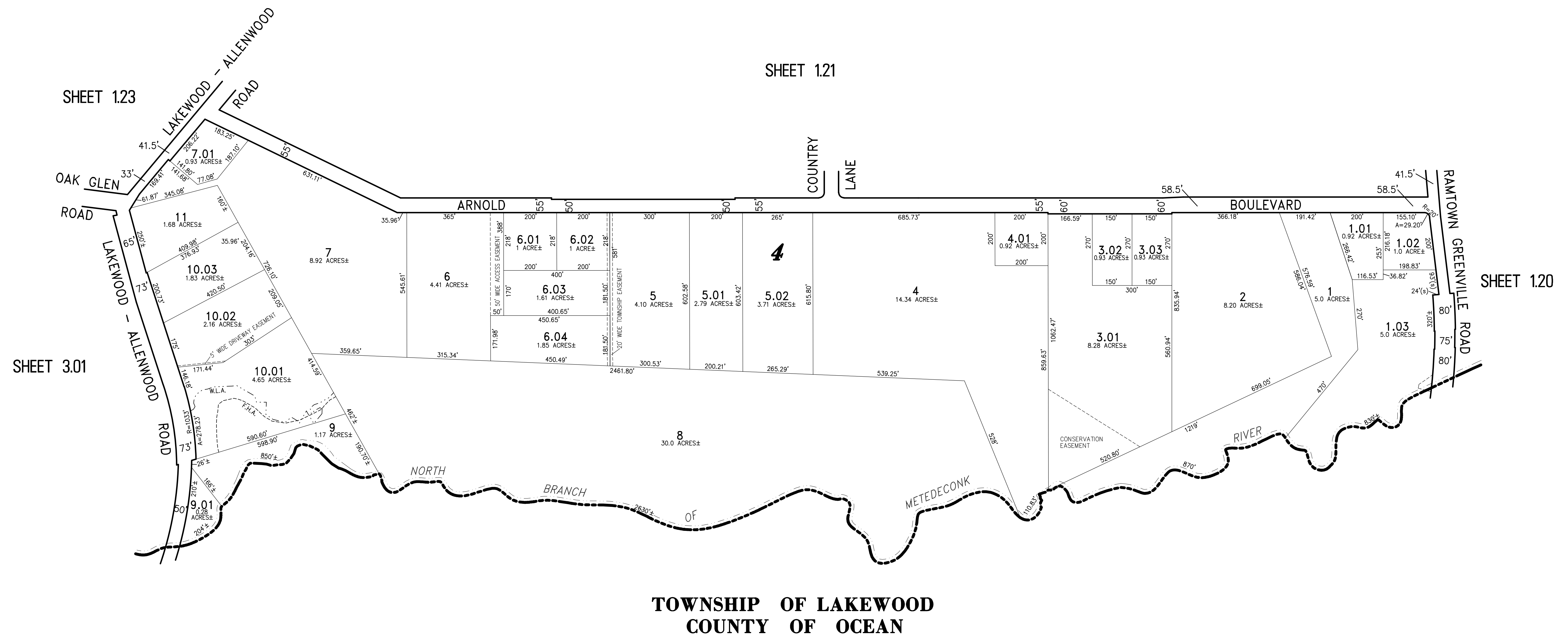
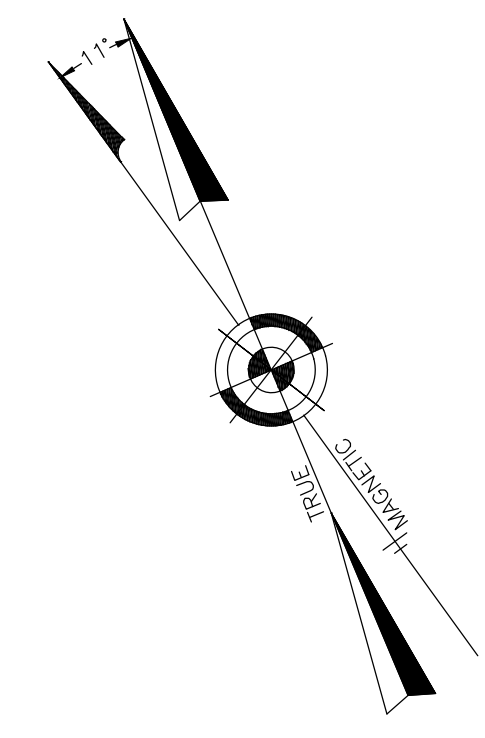


NOTE:
THIS SHEET HAS BEEN DRAWN USING COMPUTER AIDED DRAFTING/DESIGN (CAD/D) AND COORDINATE GEOMETRY (GOGO).

REVISIONS		
DATE	NAME	LIC. No.
12/15/17	GLEN J. LLOYD, P.L.S.	37598



**TOWNSHIP OF LAKEWOOD
COUNTY OF OCEAN**

**TAX MAP
TOWNSHIP OF HOWELL**

MONMOUTH COUNTY NEW JERSEY
SCALE: 1" = 200' DATE: 6-21-2005

CRAIG F. REMINGTON LAND SURVEYOR LIC. NO. 23924

REMINGTON, VERNICK & VENA ENGINEERS
24 GA 28003300
9 ALLEN STREET, TOMS RIVER, N.J. 08753
(732) 286-9220, FAX (732) 505-8416
WEB SITE ADDRESS: WWW.RVE.COM