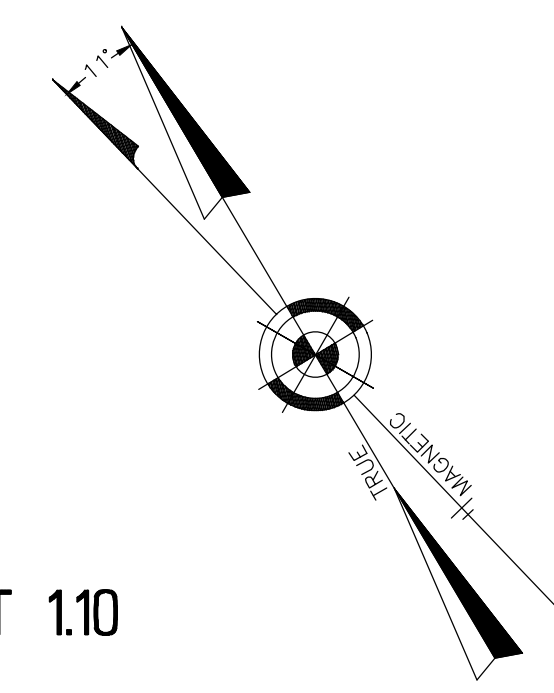
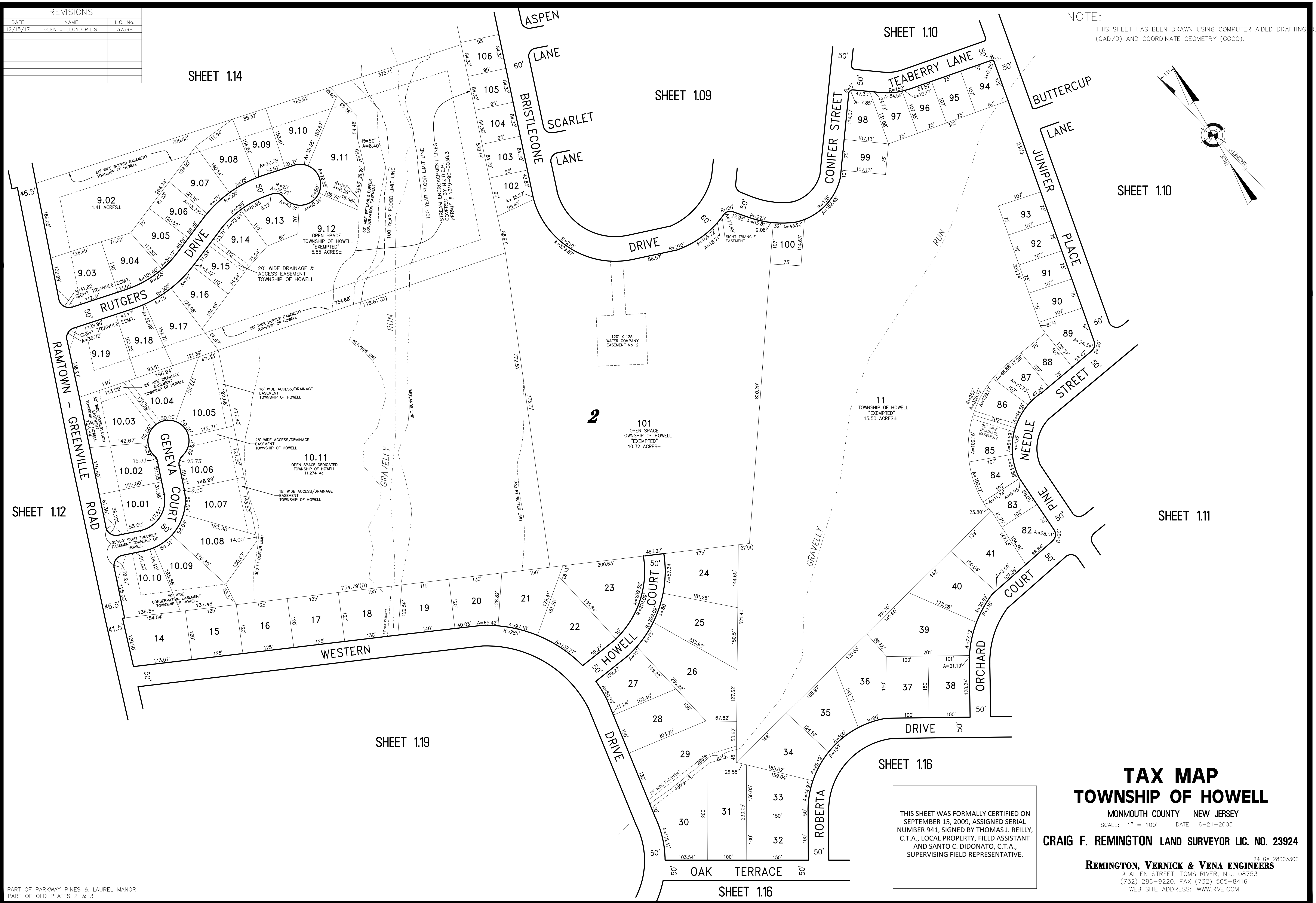


NOTE: THIS SHEET HAS BEEN DRAWN USING COMPUTER AIDED DRAFTING DESIGN (CAD/D) AND COORDINATE GEOMETRY (GOGO).



REVISIONS		
DATE	NAME	LIC. No.
12/15/17	GLEN J. LLOYD P.L.S.	37598



PART OF PARKWAY PINES & LAUREL MANOR PART OF OLD PLATES 2 & 3

THIS SHEET WAS FORMALLY CERTIFIED ON SEPTEMBER 15, 2009, ASSIGNED SERIAL NUMBER 941, SIGNED BY THOMAS J. REILLY, C.T.A., LOCAL PROPERTY, FIELD ASSISTANT AND SANTO C. DIDONATO, C.T.A., SUPERVISING FIELD REPRESENTATIVE.

TAX MAP
TOWNSHIP OF HOWELL
 MONMOUTH COUNTY NEW JERSEY
 SCALE: 1" = 100' DATE: 6-21-2005
CRAIG F. REMINGTON LAND SURVEYOR LIC. NO. 23924
REMINGTON, VERNICK & VENA ENGINEERS
 24 GA 28003300
 9 ALLEN STREET, TOMS RIVER, N.J. 08753
 (732) 286-9220, FAX (732) 505-8416
 WEB SITE ADDRESS: WWW.RVE.COM