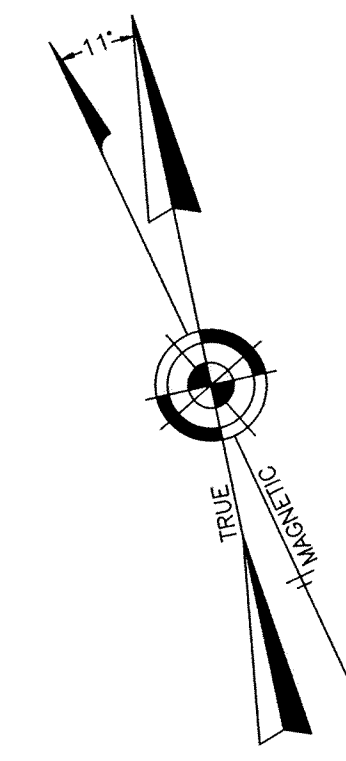
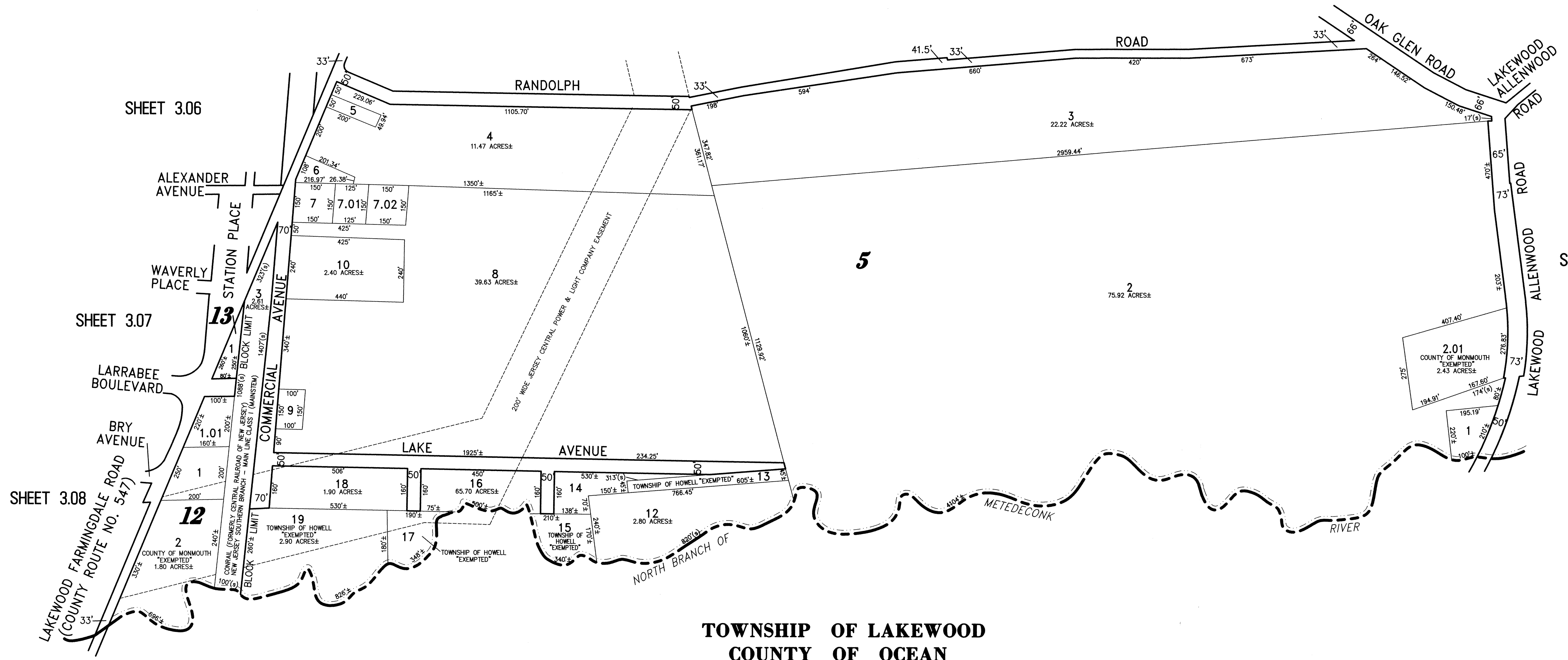


NOTE:
THIS SHEET HAS BEEN DRAWN USING COMPUTER AIDED DRAFTING/DESIGN (CAD/D) AND COORDINATE GEOMETRY (GOGG).



SHEET 3.02

SHEET 1.23



TOWNSHIP OF LAKEWOOD
COUNTY OF OCEAN

REVISED BY REMINGTON AND VERNICK ENGINEERS - 7-16-2008

PART OF OLD PLATES 4 & 5

NEW JERSEY DEPARTMENT OF THE TREASURY
DIVISION OF TAXATION
PROPERTY ADMINISTRATION
APPROVED AS A TAX MAP PURSUANT TO THE AUTHORITY OF:
N.J.A.C. 17:27 & 17:29
FOR THE DIRECTOR, DIVISION OF TAXATION

THOMAS J. RELLY, CHIEF LOCAL PROPERTY FIELD ASSISTANCE C.T.A.
Santo Calabrese, C.T.A.
SANTO C. DICOMATO, SUPERVISING FIELD REPRESENTATIVE
DATE: SEP 14 2009 SERIAL NO. 941

TAX MAP
TOWNSHIP OF HOWELL
MONMOUTH COUNTY NEW JERSEY
SCALE: 1" = 200' DATE: 6-21-2005
CRAIG F. REMINGTON LAND SURVEYOR LIC. NO. 23924

24 GA 2800.3300
REMINGTON, VERNICK & VENA ENGINEERS
9 ALLEN STREET, TOMS RIVER, N.J. 08753
(732) 286-9220, FAX (732) 505-8416
WEB SITE ADDRESS: WWW.RVE.COM