

TAX MAP TOWNSHIP OF HOWELL

MONMOUTH COUNTY NEW JERSEY
SCALE: 1" = 200' DATE: 6-21-2005

CRAIG F. REMINGTON LAND SURVEYOR LIC. NO. 23924

REMINGTON, VERNICK & VENA ENGINEERS
24 GA 28003300
9 ALLEN STREET, TOMS RIVER, N.J. 08753
(732) 286-9220, FAX (732) 505-8416
WEB SITE ADDRESS: WWW.RVE.COM

NOTE:
THIS SHEET HAS BEEN DRAWN USING COMPUTER AIDED DRAFTING/DESIGN
(CAD/D) AND COORDINATE GEOMETRY (GOGO).

THIS SHEET WAS FORMALLY CERTIFIED ON
SEPTEMBER 14, 2009, ASSIGNED SERIAL
NUMBER 941, SIGNED BY THOMAS J. REILLY,
C.T.A., LOCAL PROPERTY, FIELD ASSISTANT
AND SANTO C. DIDONATO, C.T.A.,
SUPERVISING FIELD REPRESENTATIVE.

SHEET 3.04

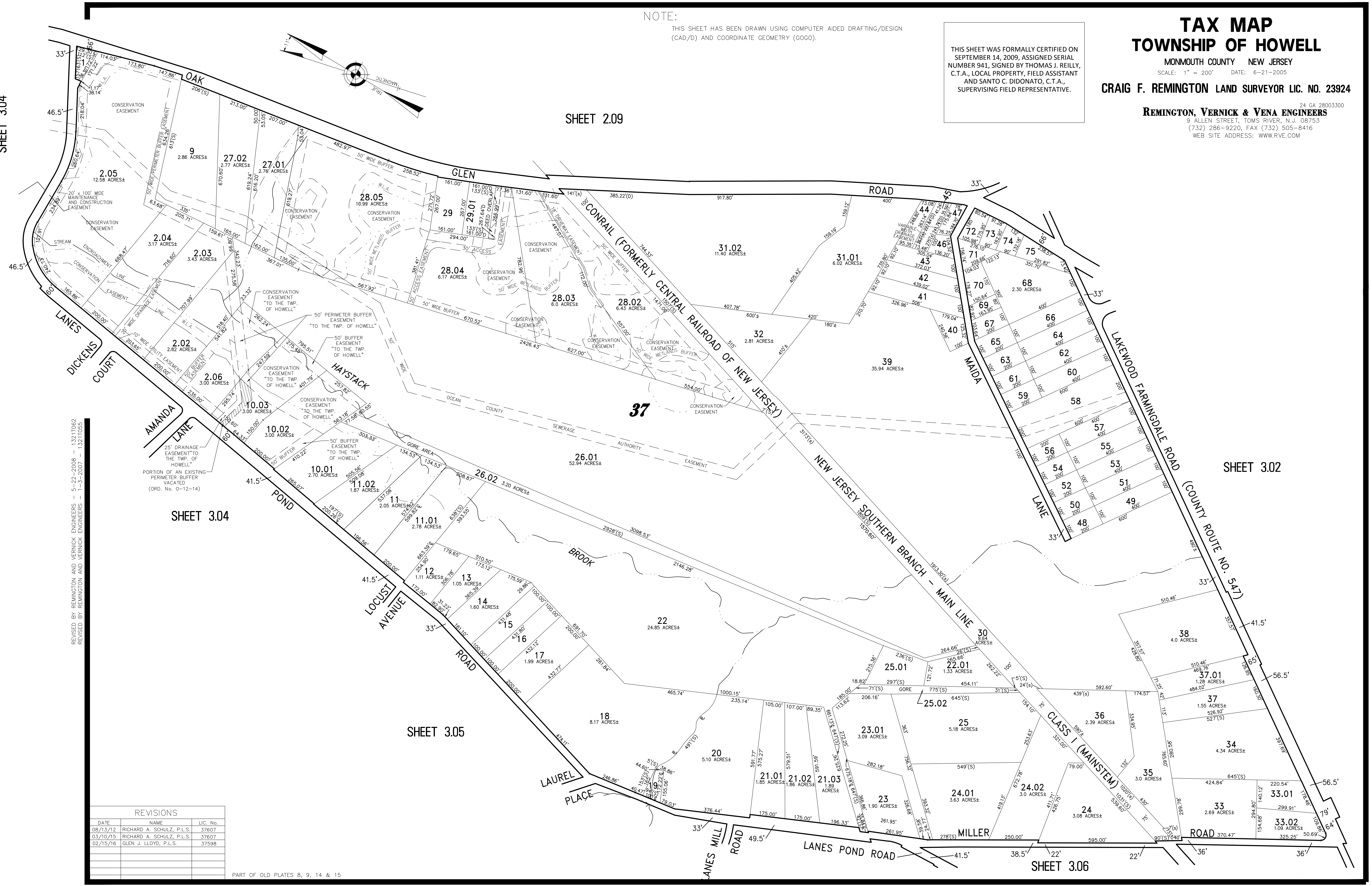
SHEET 2.09

SHEET 3.02

SHEET 3.04

SHEET 3.05

SHEET 3.06



REVISED BY REMINGTON AND VERNICK ENGINEERS - 5-22-2008 - 1321062
REVISED BY REMINGTON AND VERNICK ENGINEERS - 1-3-2007 - 1321065

REVISIONS		
DATE	NAME	LIC. No.
08/13/12	RICHARD A. SCHULZ, P.L.S.	37607
03/10/15	RICHARD A. SCHULZ, P.L.S.	37607
02/15/16	GLEN J. LLOYD, P.L.S.	37598

PART OF OLD PLATES 8, 9, 14 & 15