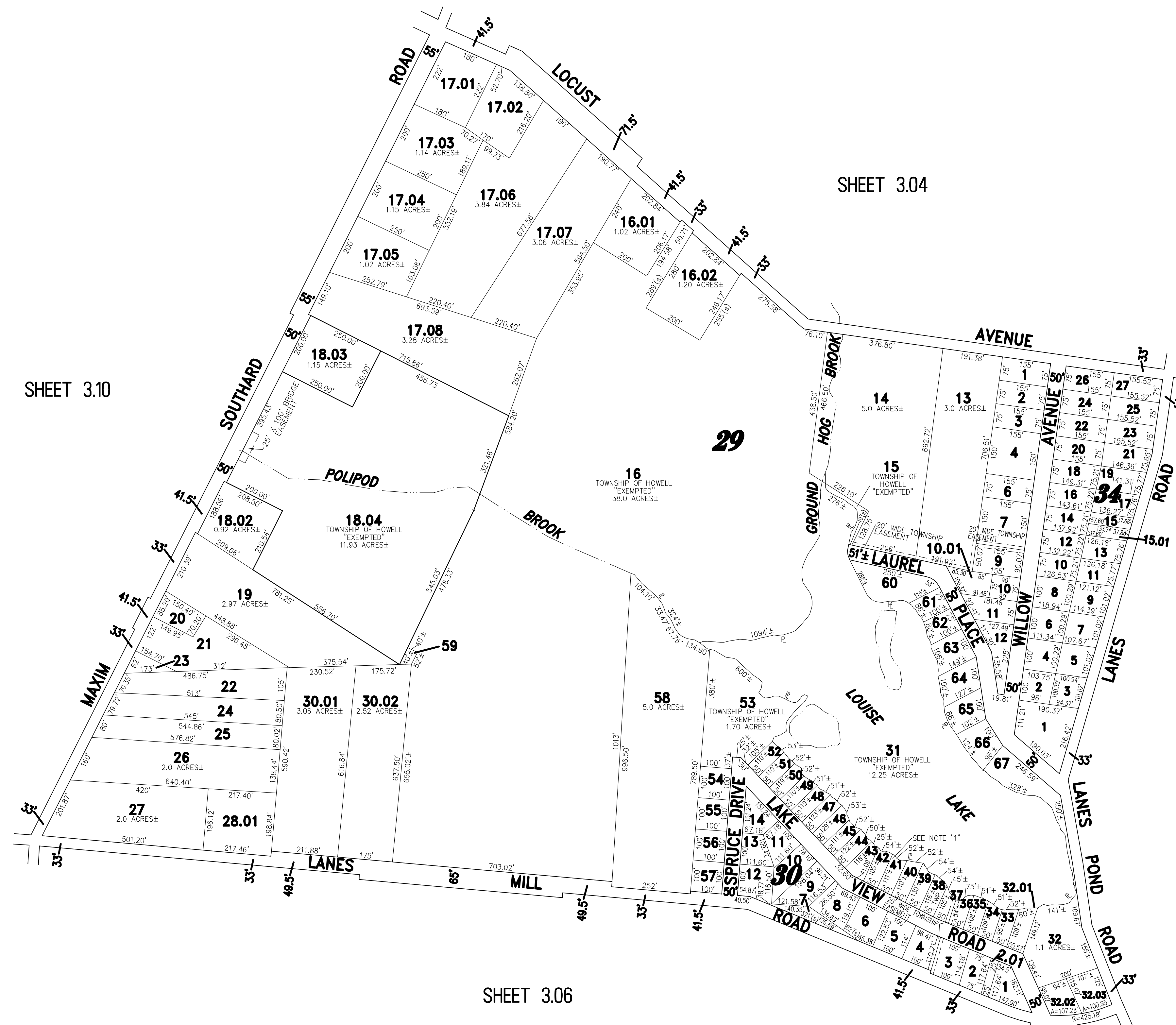
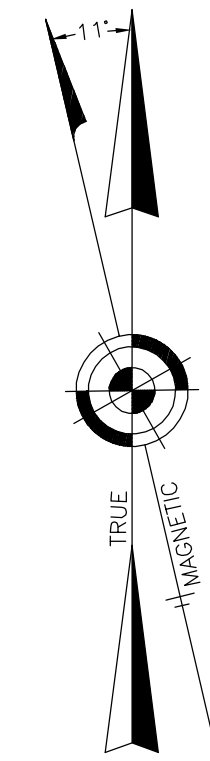


NOTE:
THIS SHEET HAS BEEN DRAWN USING COMPUTER AIDED DRAFTING/DESIGN (CAD/D) AND COORDINATE GEOMETRY (COGO).

REVISIONS		
DATE	NAME	LIC. No.
06/01/11	RICHARD A. SCHULZ, P.L.S.	37607
07/19/12	RICHARD A. SCHULZ, P.L.S.	37607
03/10/15	RICHARD A. SCHULZ, P.L.S.	37607



SHEET 3.10

SHEET 3.04

SHEET 3.03

SHEET 3.06

GENERAL NOTE 1:
BLOCK 29, LOTS 36-52 & 54-57 - EXEMPTED LOTS TO THE TOWNSHIP OF HOWELL

THIS SHEET WAS FORMALLY CERTIFIED ON
SEPTEMBER 14, 2009,
ASSIGNED SERIAL NUMBER 941,
SIGNED BY THOMAS J. REILLY, C.T.A.,
LOCAL PROPERTY, FIELD ASSISTANT
AND SANTO C. DIDONATO, C.T.A.,
SUPERVISING FIELD REPRESENTATIVE.

TAX MAP TOWNSHIP OF HOWELL

MONMOUTH COUNTY NEW JERSEY
SCALE: 1" = 200' DATE: 6-21-2005

CRAIG F. REMINGTON LAND SURVEYOR LIC. NO. 23924



REMINGTON, VERNICK & VENA ENGINEERS
9 ALLEN STREET, TOMS RIVER, NJ, 08753
(732) 286-9220, FAX (732) 505-8416
WEB SITE ADDRESS: WWW.RVVE.COM