

# TAX MAP TOWNSHIP OF HOWELL

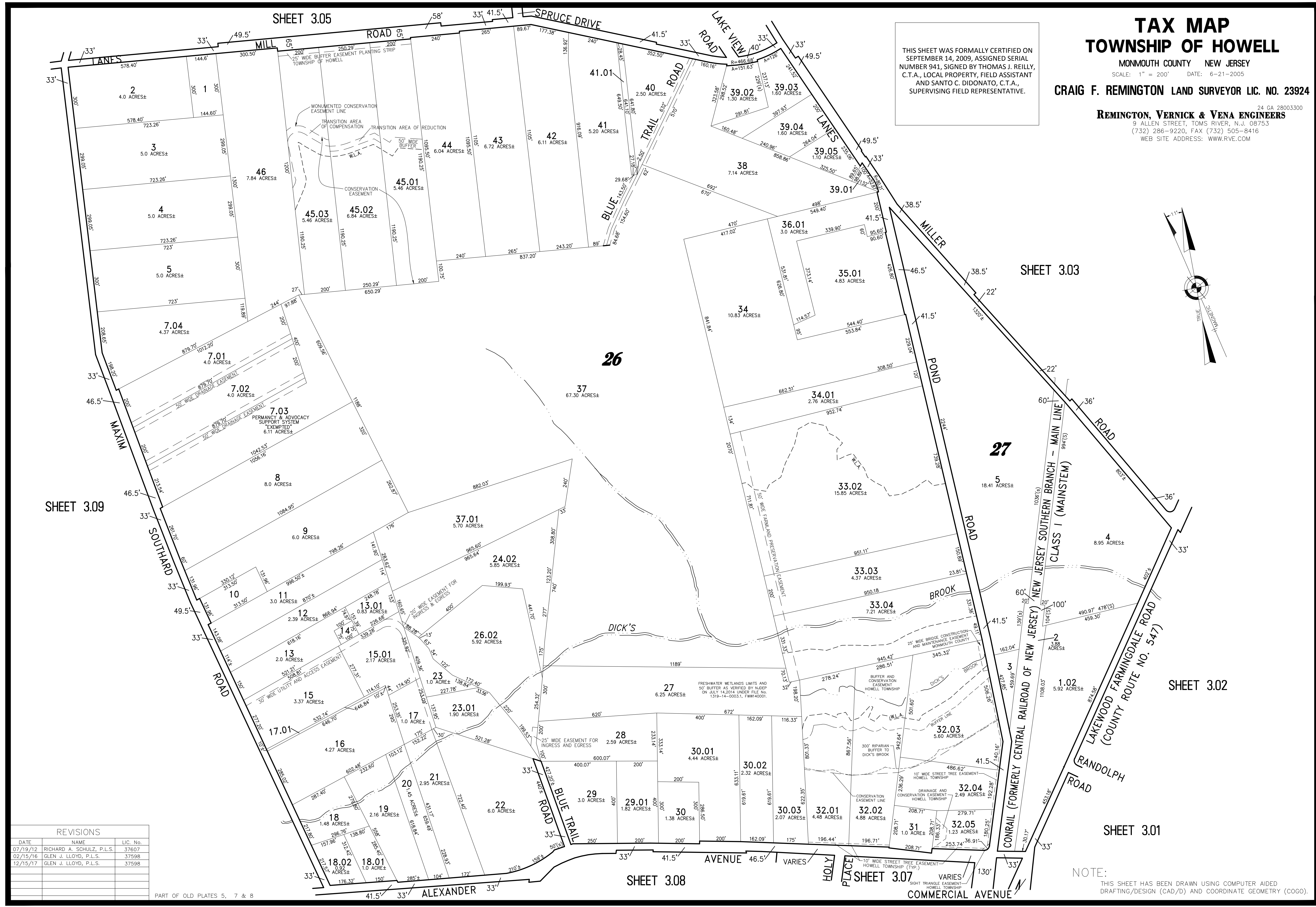
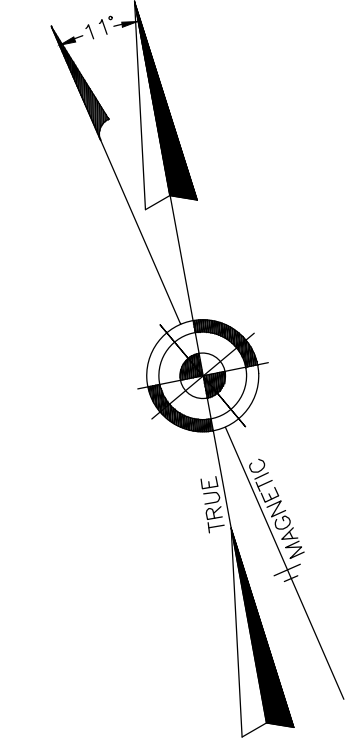
MONMOUTH COUNTY NEW JERSEY

SCALE: 1" = 200' DATE: 6-21-2005

CRAIG F. REMINGTON LAND SURVEYOR LIC. NO. 23924

REMINGTON, VERNICK & VENA ENGINEERS  
24 GA 28003300  
9 ALLEN STREET, TOMS RIVER, N.J. 08753  
(732) 286-9220, FAX (732) 505-8416  
WEB SITE ADDRESS: WWW.RVE.COM

THIS SHEET WAS FORMALLY CERTIFIED ON  
SEPTEMBER 14, 2009, ASSIGNED SERIAL  
NUMBER 941, SIGNED BY THOMAS J. REILLY,  
C.T.A., LOCAL PROPERTY, FIELD ASSISTANT  
AND SANTO C. DIDONATO, C.T.A.,  
SUPERVISING FIELD REPRESENTATIVE.



REVISIONS		
DATE	NAME	LIC. No.
07/19/12	RICHARD A. SCHULZ, P.L.S.	37607
02/15/16	GLEN J. LLOYD, P.L.S.	37598
12/15/17	GLEN J. LLOYD, P.L.S.	37598

PART OF OLD PLATES 5, 7 & 8

NOTE: THIS SHEET HAS BEEN DRAWN USING COMPUTER AIDED DRAFTING/DESIGN (CAD/D) AND COORDINATE GEOMETRY (COCO).