

TAX MAP TOWNSHIP OF HOWELL

MONMOUTH COUNTY NEW JERSEY
SCALE: 1" = 200' DATE: 6-21-2005

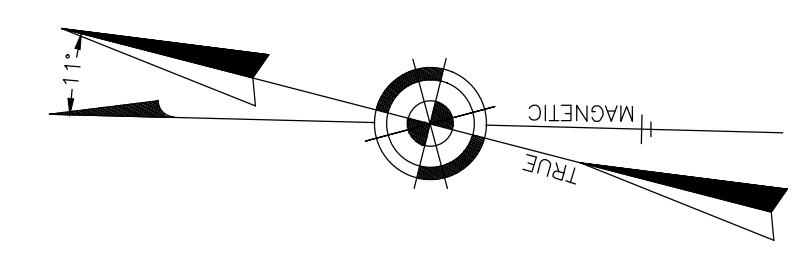
CRAIG F. REMINGTON LAND SURVEYOR LIC. NO. 23924

REMINGTON, VERNICK & VENA ENGINEERS
24 GA 28003300
9 ALLEN STREET, TOMS RIVER, N.J. 08753
(732) 286-9220, FAX (732) 505-8416
WEB SITE ADDRESS: WWW.RVE.COM

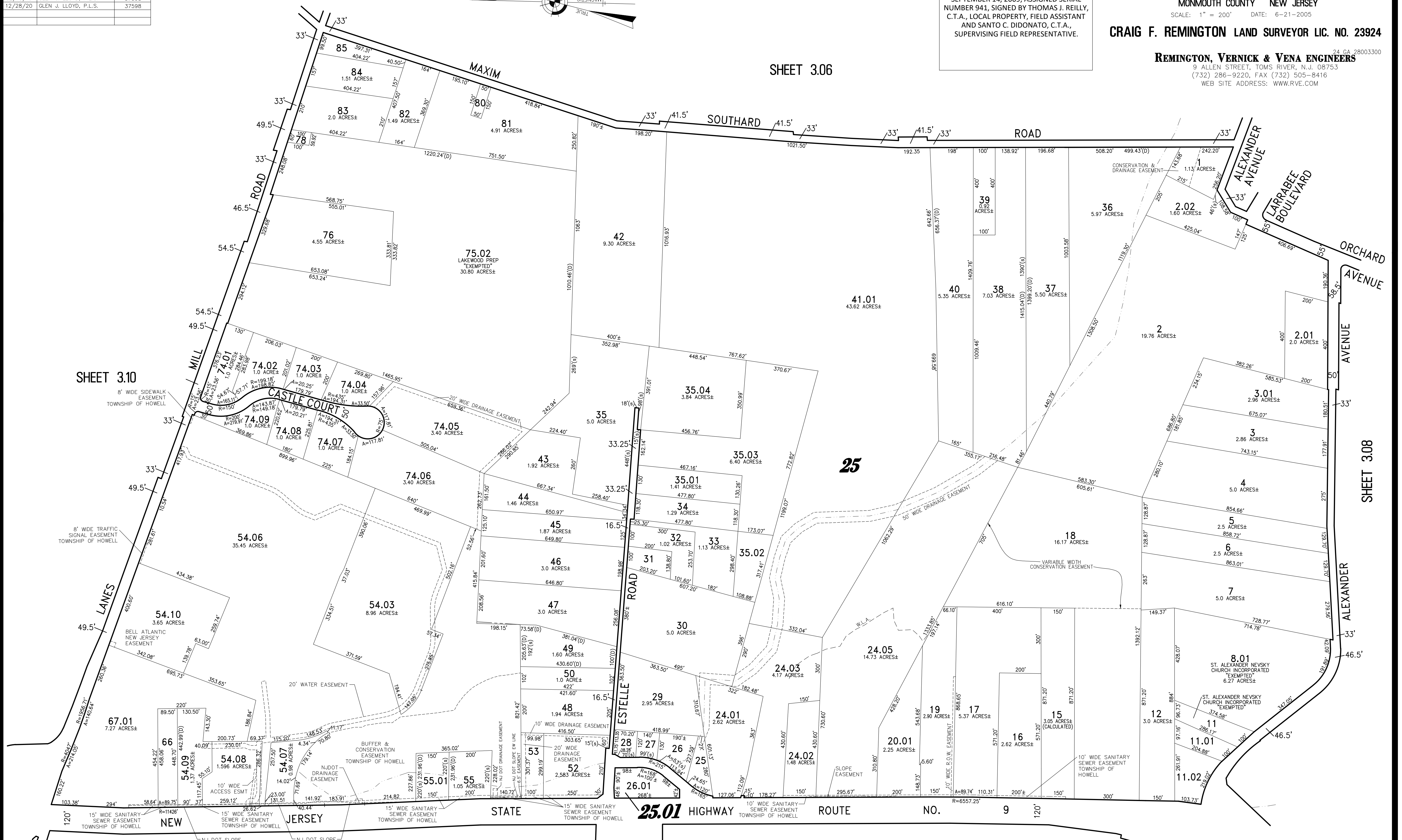
THIS SHEET WAS FORMALLY CERTIFIED ON
SEPTEMBER 14, 2009, ASSIGNED SERIAL
NUMBER 941, SIGNED BY THOMAS J. REILLY,
C.T.A., LOCAL PROPERTY, FIELD ASSISTANT
AND SANTO C. DIDONATO, C.T.A.,
SUPERVISING FIELD REPRESENTATIVE.

DATE	NAME	LIC. No.
09/30/15	GLEN J. LLOYD, P.L.S.	37598
11/13/15	GLEN J. LLOYD, P.L.S.	37598
12/21/15	GLEN J. LLOYD, P.L.S.	37598
12/15/17	GLEN J. LLOYD, P.L.S.	37598
02/15/19	GLEN J. LLOYD, P.L.S.	37598
12/28/20	GLEN J. LLOYD, P.L.S.	37598

NOTE:
THIS SHEET HAS BEEN DRAWN USING COMPUTER AIDED
DRAFTING/DESIGN (CAD/D) AND COORDINATE GEOMETRY (COGO).



SHEET 3.06



SHEET 3.13

PART OF OLD PLATES 6 & 7