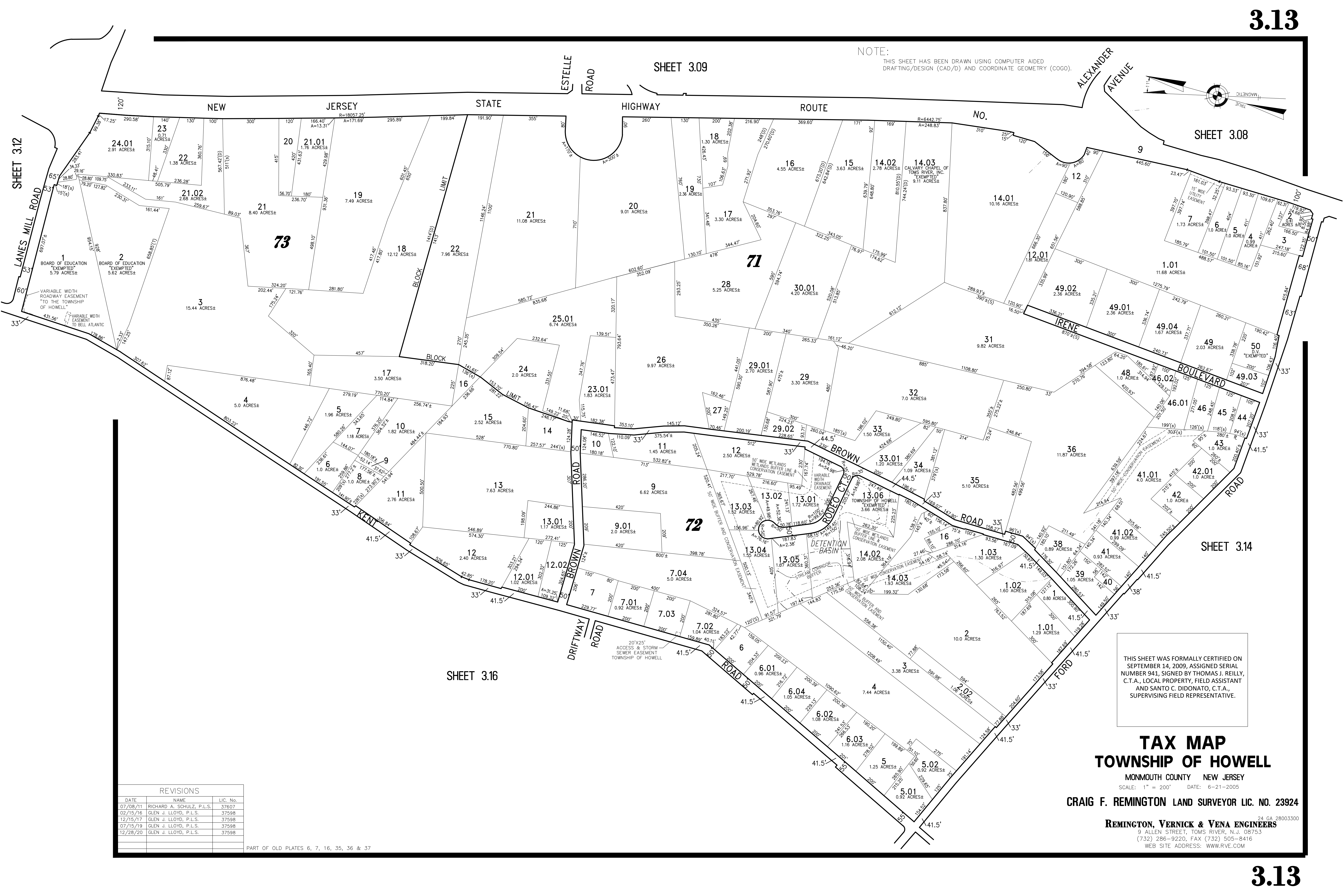
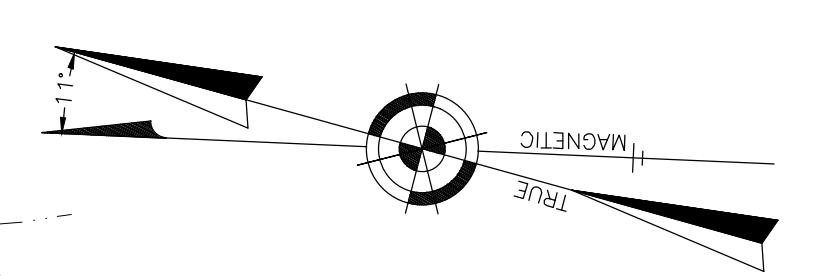


NOTE: THIS SHEET HAS BEEN DRAWN USING COMPUTER AIDED DRAFTING/DESIGN (CAD/D) AND COORDINATE GEOMETRY (COGO).



THIS SHEET WAS FORMALLY CERTIFIED ON SEPTEMBER 14, 2009, ASSIGNED SERIAL NUMBER 941, SIGNED BY THOMAS J. REILLY, C.T.A., LOCAL PROPERTY, FIELD ASSISTANT AND SANTO C. DIDONATO, C.T.A., SUPERVISING FIELD REPRESENTATIVE.

### TAX MAP TOWNSHIP OF HOWELL

MONMOUTH COUNTY NEW JERSEY  
SCALE: 1" = 200' DATE: 6-21-2005

CRAIG F. REMINGTON LAND SURVEYOR LIC. NO. 23924

REMINGTON, VERNICK & VENA ENGINEERS  
24 GA. 28003300  
9 ALLEN STREET, TOMS RIVER, N.J. 08753  
(732) 286-9220, FAX (732) 505-8416  
WEB SITE ADDRESS: WWW.RVE.COM

REVISIONS		
DATE	NAME	LIC. No.
07/08/11	RICHARD A. SCHULZ, P.L.S.	37607
02/15/16	GLEN J. LLOYD, P.L.S.	37598
12/15/17	GLEN J. LLOYD, P.L.S.	37598
07/15/19	GLEN J. LLOYD, P.L.S.	37598
12/28/20	GLEN J. LLOYD, P.L.S.	37598

PART OF OLD PLATES 6, 7, 16, 35, 36 & 37