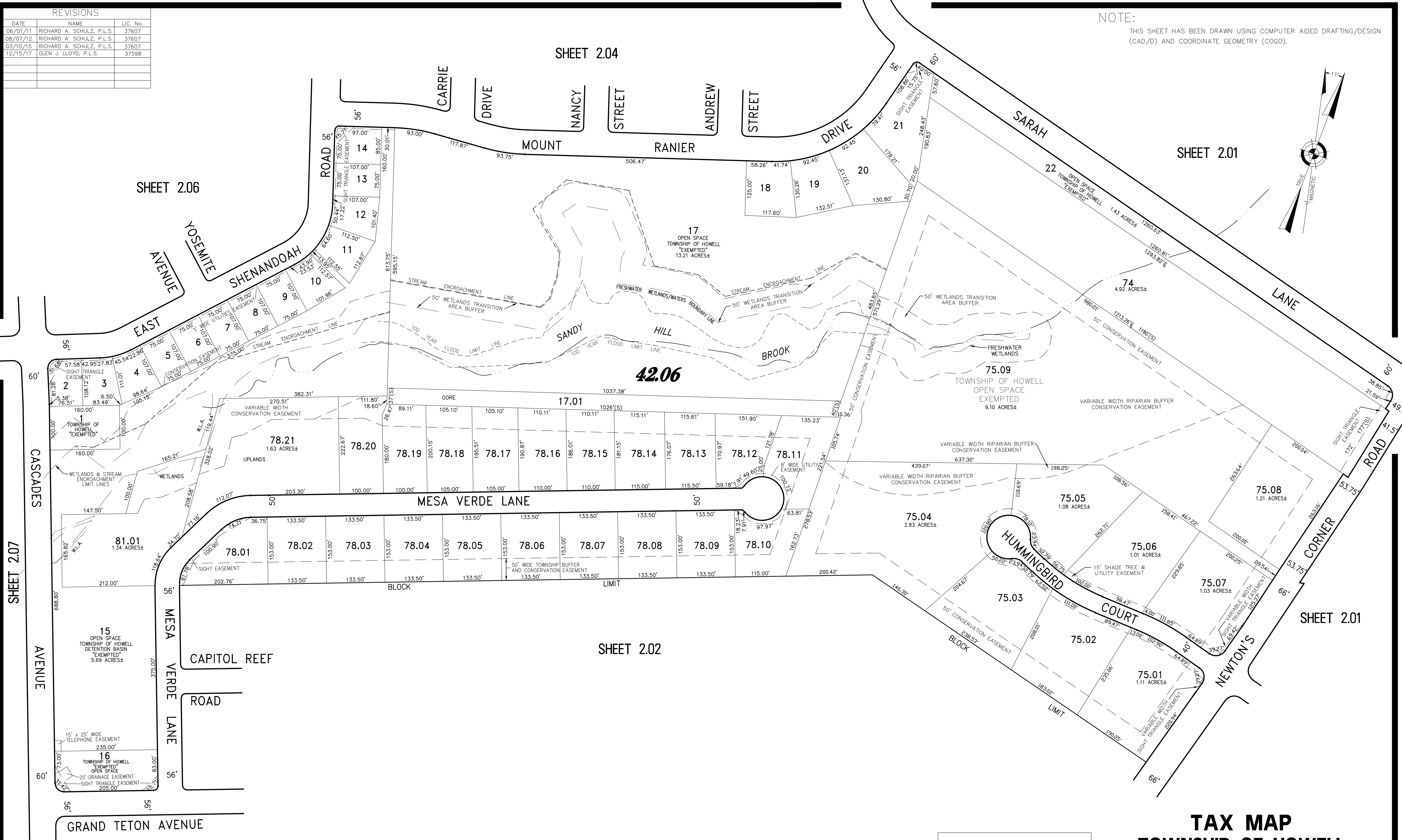
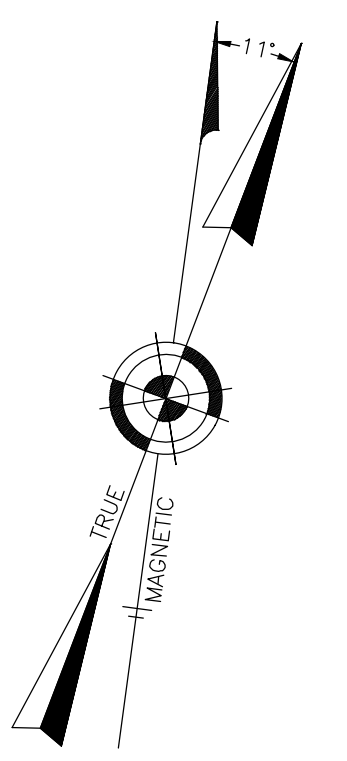


REVISIONS		
DATE	NAME	LIC. No.
06/01/11	RICHARD A. SCHULZ, P.L.S.	37607
08/07/12	RICHARD A. SCHULZ, P.L.S.	37607
03/10/15	RICHARD A. SCHULZ, P.L.S.	37607
12/15/17	GLEN J. LLOYD, P.L.S.	37598

NOTE:  
THIS SHEET HAS BEEN DRAWN USING COMPUTER AIDED DRAFTING/DESIGN (CAD/D) AND COORDINATE GEOMETRY (COGO).



REVISED BY REMINGTON AND VERNICK ENGINEERS - 7-16-2008

CHESTNUT RIDGE  
PART OF OLD PLATES 11 & 12

**TAX MAP**  
**TOWNSHIP OF HOWELL**  
MONMOUTH COUNTY NEW JERSEY  
SCALE: 1" = 100' DATE: 6-21-2005  
**CRAIG F. REMINGTON LAND SURVEYOR LIC. NO. 23924**  
**REMINGTON, VERNICK & VENA ENGINEERS**  
24 GA. 28003300  
9 ALLEN STREET, TOMS RIVER, N.J. 08753  
(732) 286-9220, FAX (732) 505-8416  
WEB SITE ADDRESS: WWW.RVE.COM