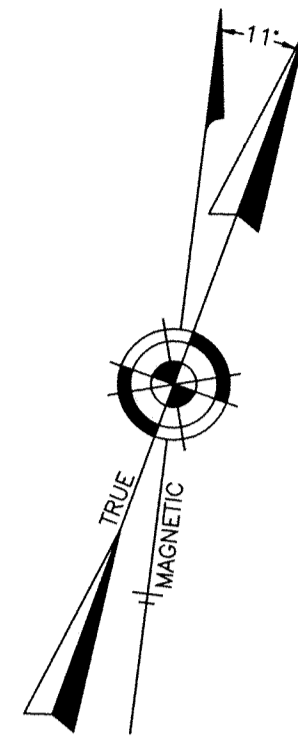


NOTE:
THIS SHEET HAS BEEN DRAWN USING COMPUTER AIDED DRAFTING/DESIGN (CADD) AND COORDINATE GEOMETRY (GOGO).



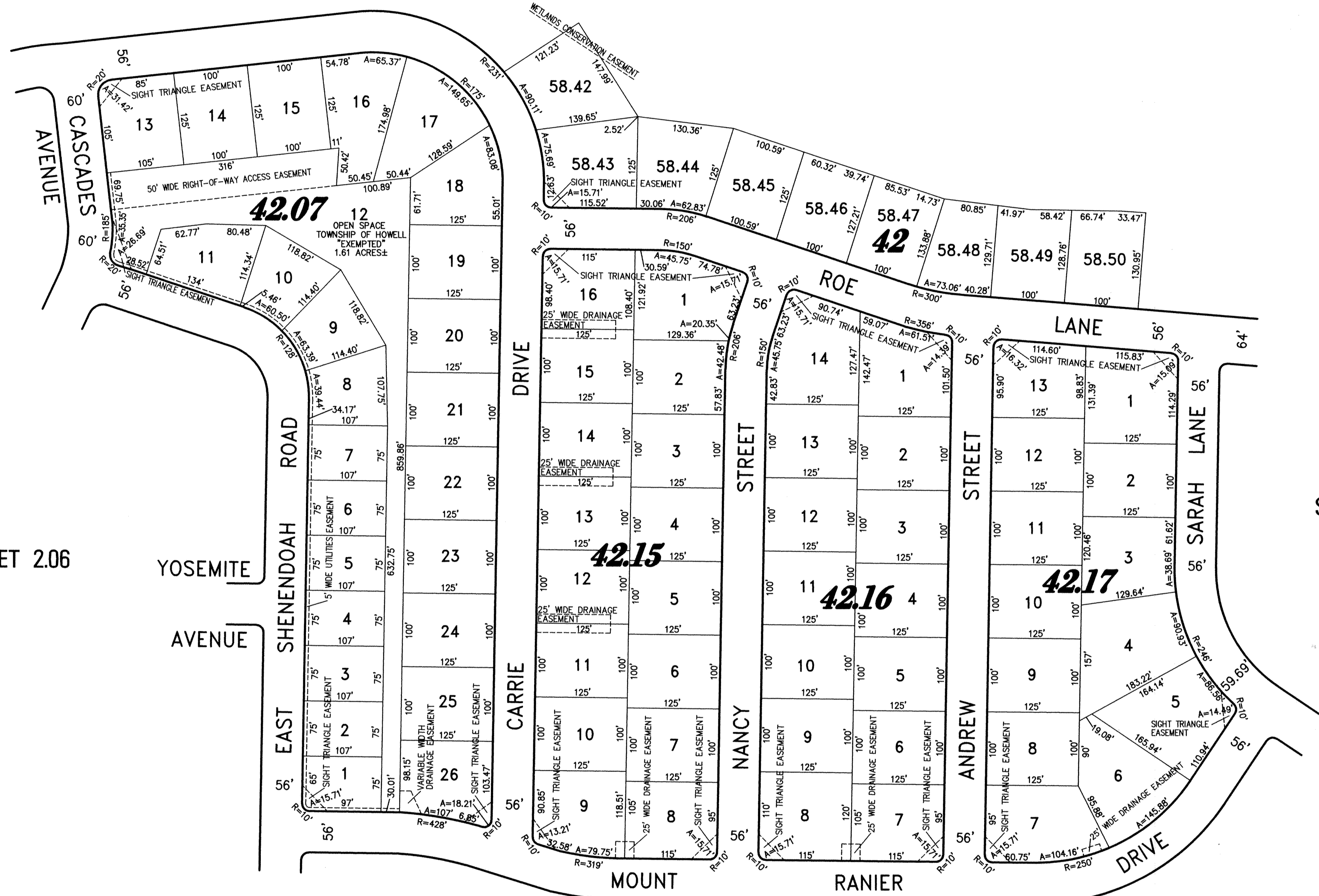
SHEET 2.05

SHEET 2.07

SHEET 2.06

SHEET 2.01

SHEET 2.03



CROSSWOODS ESTATES
PART OF OLD PLATES 12 & 13

NEW JERSEY DEPARTMENT OF THE TREASURY
DIVISION OF TAXATION
PROPERTY ADMINISTRATION
APPROVED AS A TAX MAP PURSUANT TO THE AUTHORITY OF
N.J.S.A. 17:27-18.5(2)
FOR THE DIRECTOR OF TAXATION
THOMAS J. HILL, CHIEF, FIELD ASSISTANCE
Santo C. DiDonato, C.T.A.
SANTO C. DIDONATO, SUPERVISING FIELD REPRESENTATIVE
DATE: SEP 14 2009 SERIAL NO. 911

TAX MAP
TOWNSHIP OF HOWELL
MONMOUTH COUNTY NEW JERSEY
SCALE: 1" = 100' DATE: 6-21-2005
CRAIG F. REMINGTON LAND SURVEYOR LIC. NO. 23924
REMINGTON, VERNICK & VENA ENGINEERS
24 GA 28003300
9 ALLEN STREET, TOMS RIVER, NJ 08753
(732) 206-9220, FAX (732) 505-8416
WEB SITE ADDRESS: WWW.RVVE.COM