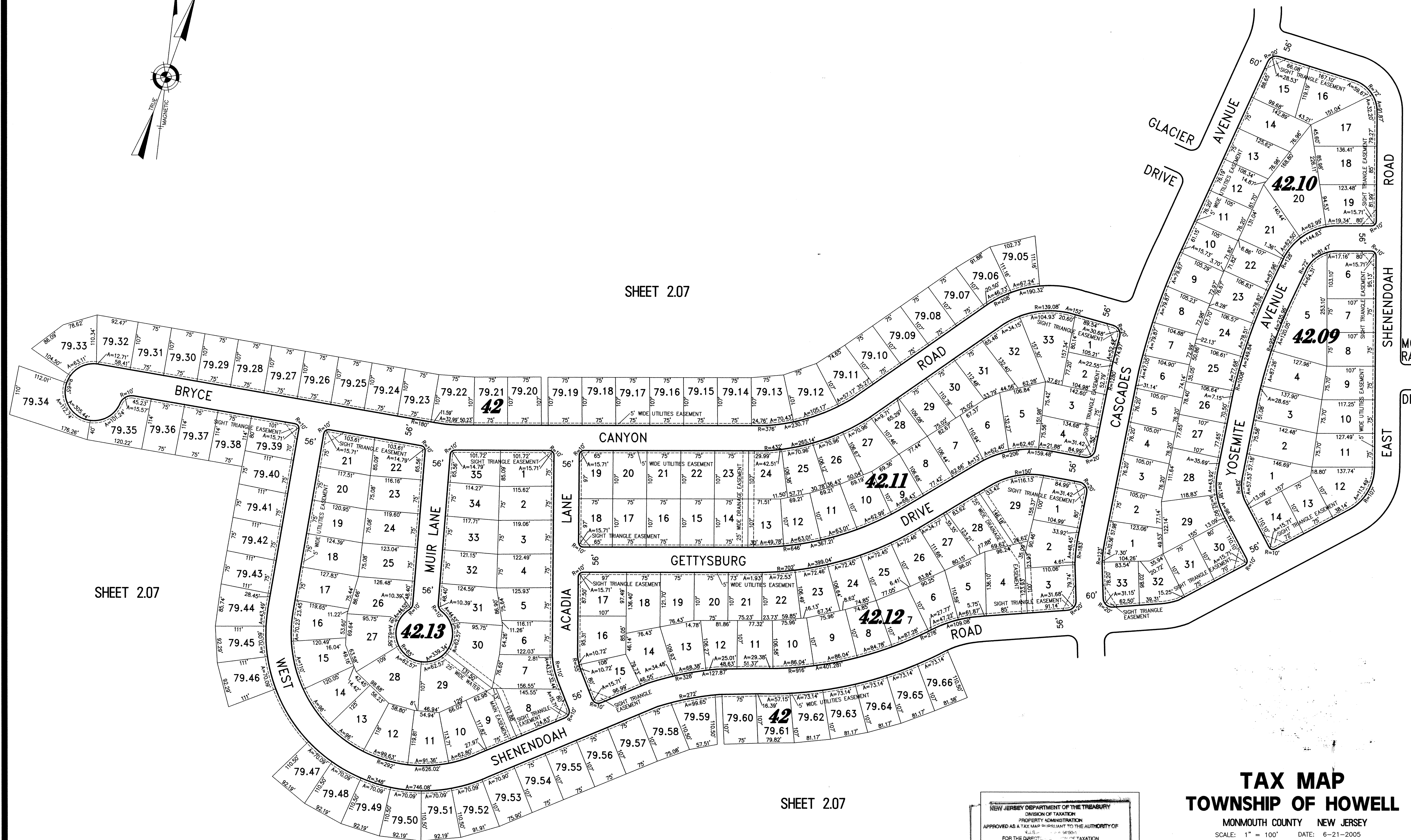
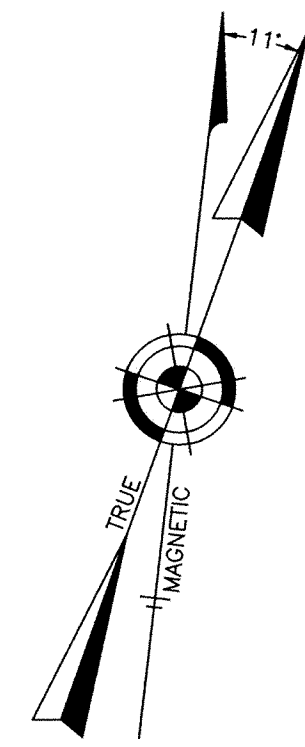


NOTE:
THIS SHEET HAS BEEN DRAWN USING COMPUTER AIDED DRAFTING/DESIGN (CAD/D) AND COORDINATE GEOMETRY (GOGO).



SHEET 2.07

SHEET 2.07

SHEET 2.07

SHEET 2.04

MOUNT RAINER DRIVE

SHENENDOAH EAST DRIVE

NEW JERSEY DEPARTMENT OF THE TREASURY
DIVISION OF TAXATION
PROPERTY ADMINISTRATION
APPROVED AS A TAX MAP PURSUANT TO THE AUTHORITY OF
N.J.S.A. 17:27-26
FOR THE DIRECTOR OF TAXATION
[Signature] C.T.A.
THOMAS J. REILLY, CHIEF, LOCAL PROPERTY FIELD ASSISTANCE
[Signature] C.T.A.
SANTO C. DI DONATO, SUPERVISING FIELD REPRESENTATIVE
DATE: SEP 14 2009 SERIAL NO. 949

TAX MAP TOWNSHIP OF HOWELL

MONMOUTH COUNTY NEW JERSEY
SCALE: 1" = 100' DATE: 6-21-2005
CRAIG F. REMINGTON LAND SURVEYOR LIC. NO. 23924

REMINGTON, VERNICK & VENA ENGINEERS
24 GA 28003300
9 ALLEN STREET, TOMS RIVER, N.J. 08753
(732) 286-9220, FAX (732) 505-8446
WEB SITE ADDRESS: WWW.RVVE.COM

PARKSIDE COMMONS SECTIONS 5 - 6 & PART OF 3
PART OF OLD PLATES 10 & 13