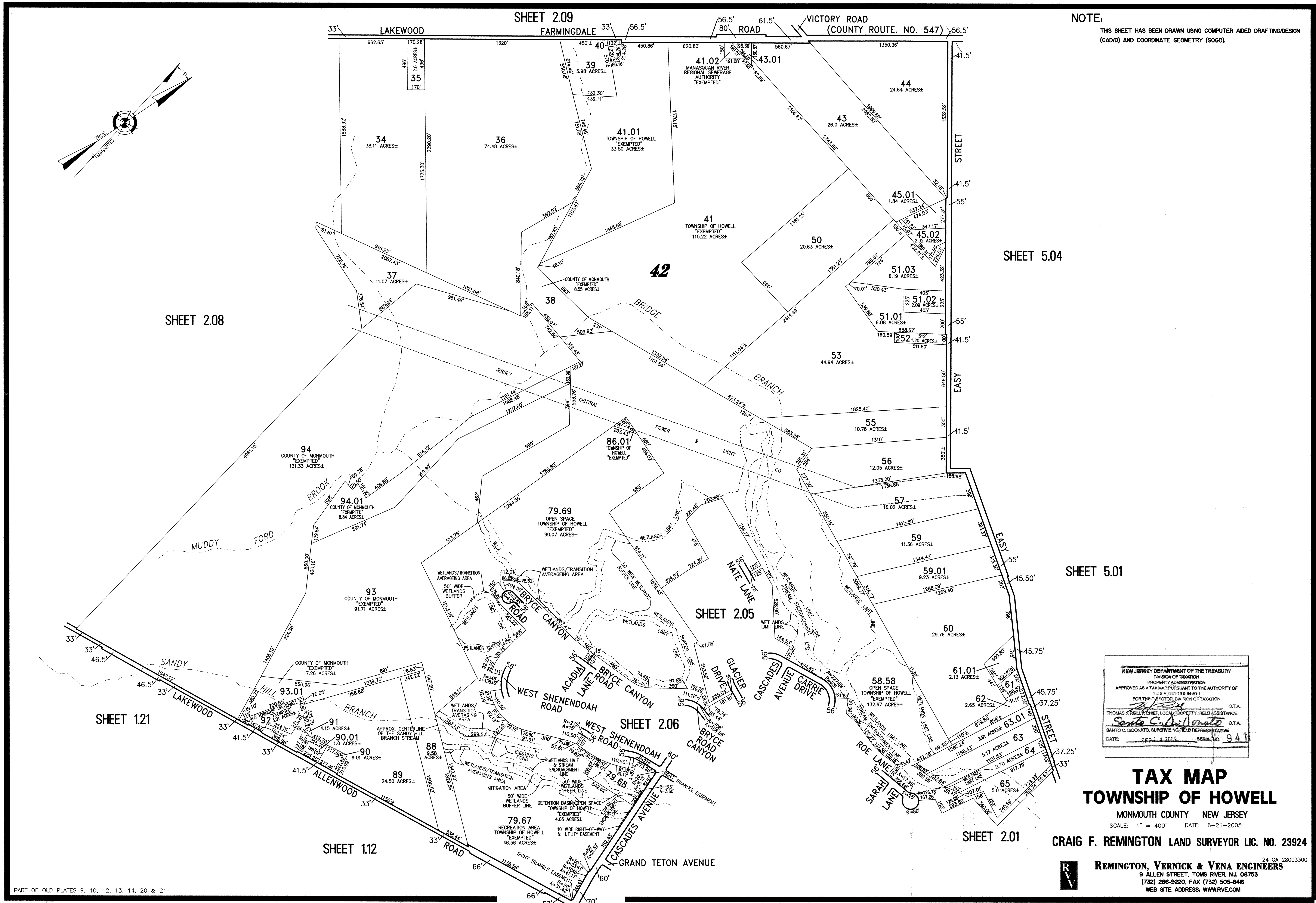
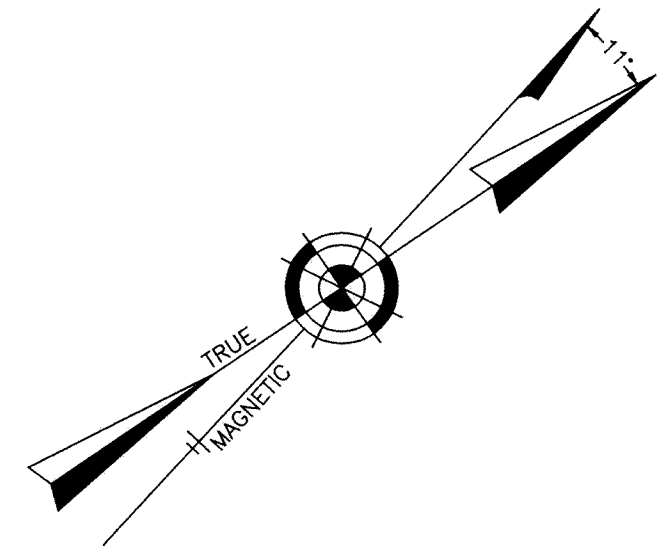


NOTE:  
THIS SHEET HAS BEEN DRAWN USING COMPUTER AIDED DRAFTING/DESIGN (CAD/D) AND COORDINATE GEOMETRY (GOCO).



SHEET 2.08

SHEET 5.04

SHEET 5.01

SHEET 1.21

SHEET 2.05

SHEET 2.06

SHEET 2.01

SHEET 1.12

NEW JERSEY DEPARTMENT OF THE TREASURY  
DIVISION OF TAXATION  
PROPERTY ADMINISTRATION  
APPROVED AS A TAX MAP PURSUANT TO THE AUTHORITY OF  
N.J.S.A. 54:15 & 54:50-1  
FOR THE DIRECTOR, DIVISION OF TAXATION  
*Thomas J. Pelly* C.T.A.  
*Santo C. DiNatale* C.T.A.  
SANTO C. DINATALE, SUPERVISING FIELD REPRESENTATIVE  
DATE: SEP 14 2009 SERIAL NO. 941

### TAX MAP TOWNSHIP OF HOWELL

MONMOUTH COUNTY NEW JERSEY  
SCALE: 1" = 400' DATE: 6-21-2005

CRAIG F. REMINGTON LAND SURVEYOR LIC. NO. 23924

REMINGTON, VERNICK & VENA ENGINEERS  
9 ALLEN STREET, TOMS RIVER, NJ 08753  
(732) 296-9220, FAX (732) 505-8486  
WEB SITE ADDRESS: WWW.RVVE.COM

PART OF OLD PLATES 9, 10, 12, 13, 14, 20 & 21