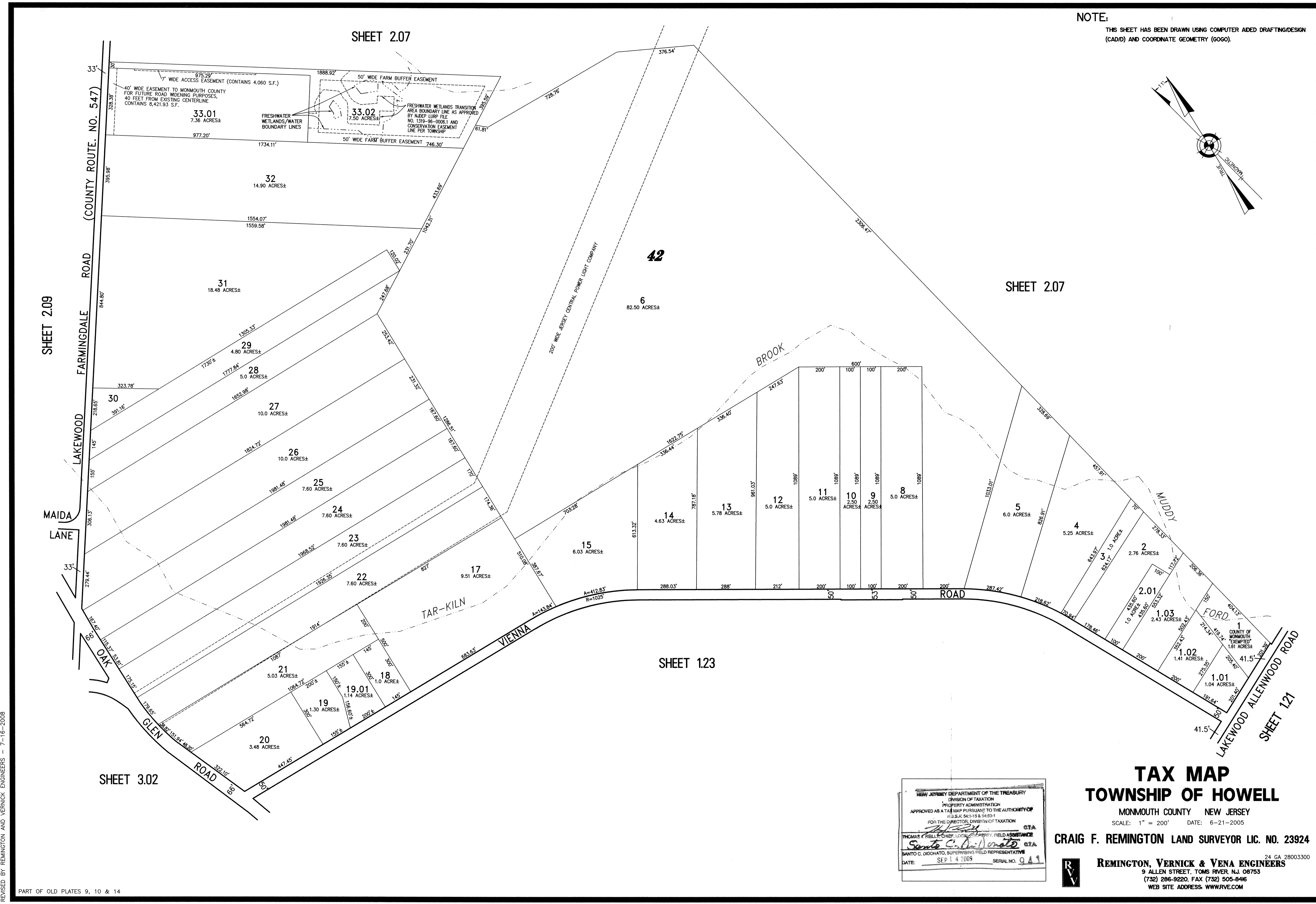
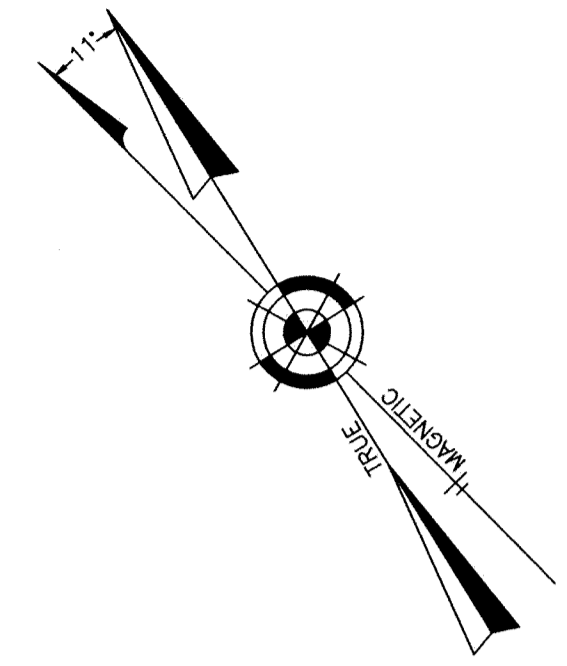


NOTE:
THIS SHEET HAS BEEN DRAWN USING COMPUTER AIDED DRAFTING/DESIGN (CADD) AND COORDINATE GEOMETRY (GOGO).



NEW JERSEY DEPARTMENT OF THE TREASURY
DIVISION OF TAXATION
PROPERTY ADMINISTRATION
APPROVED AS A TAX MAP PURSUANT TO THE AUTHORITY OF
N.J.S.A. 54:1-15 & 54:50-1
FOR THE DIRECTOR, DIVISION OF TAXATION
THOMAS J. HELL, CHIEF, LOCAL PROPERTY FIELD ASSISTANCE
Santo C. DiDonato, SUPERVISING FIELD REPRESENTATIVE
DATE: SEP 14 2009 SERIAL NO. 949

TAX MAP
TOWNSHIP OF HOWELL
MONMOUTH COUNTY NEW JERSEY
SCALE: 1" = 200' DATE: 6-21-2005
CRAIG F. REMINGTON LAND SURVEYOR LIC. NO. 23924
REMINGTON, VERNICK & VENA ENGINEERS
24 GA 28003300
9 ALLEN STREET, TOMS RIVER, N.J. 08753
(732) 286-9220, FAX (732) 505-8416
WEB SITE ADDRESS: WWW.RVVE.COM

REVISED BY REMINGTON AND VERNICK ENGINEERS - 7-16-2008

PART OF OLD PLATES 9, 10 & 14