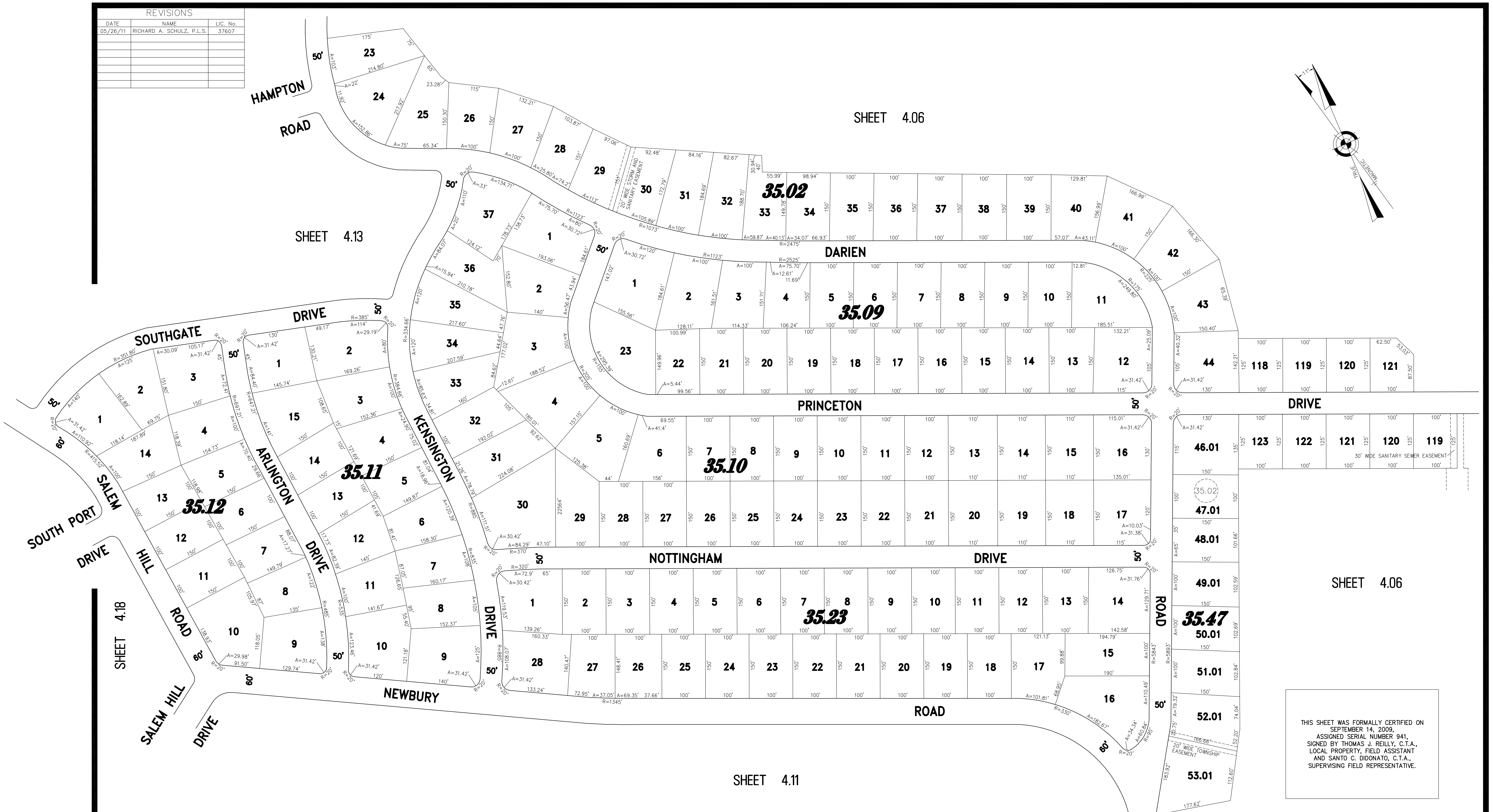
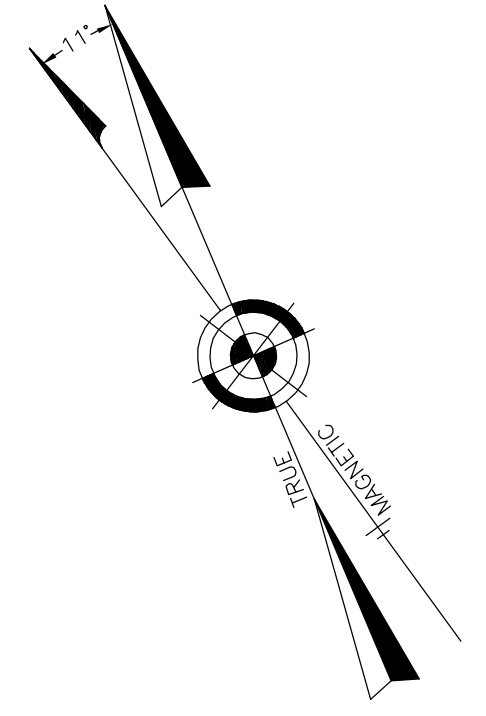


REVISIONS		
DATE	NAME	LIC. No.
05/26/11	RICHARD A. SCHULZ, P.L.S.	37607



THIS SHEET WAS FORMALLY CERTIFIED ON
 SEPTEMBER 14, 2009,
 ASSIGNED SERIAL NUMBER 941,
 SIGNED BY THOMAS J. REILLY, C.T.A.,
 LOCAL PROPERTY FIELD ASSISTANT
 AND SANTO C. DIDONATO, C.T.A.,
 SUPERVISING FIELD REPRESENTATIVE.

TAX MAP
TOWNSHIP OF HOWELL

MONMOUTH COUNTY NEW JERSEY
 SCALE: 1" = 100' DATE: 6-21-2005

CRAIG F. REMINGTON LAND SURVEYOR LIC. NO. 23924

REMINGTON, VERNICK & VENA ENGINEERS
 9 ALLEN STREET, TOMS RIVER, NJ 08753
 (732) 286-9220, FAX (732) 505-9416
 WEB SITE ADDRESS: WWW.RVVE.COM

PART OF SALEM HILL, LAND O' PINE
 COMBINED - PART OF OLD PLATES 27.01, 27.02, AND 27.04