

# TAX MAP TOWNSHIP OF HOWELL

MONMOUTH COUNTY NEW JERSEY  
SCALE: 1" = 100' DATE: 6-21-2005

CRAIG F. REMINGTON LAND SURVEYOR LIC. NO. 23924

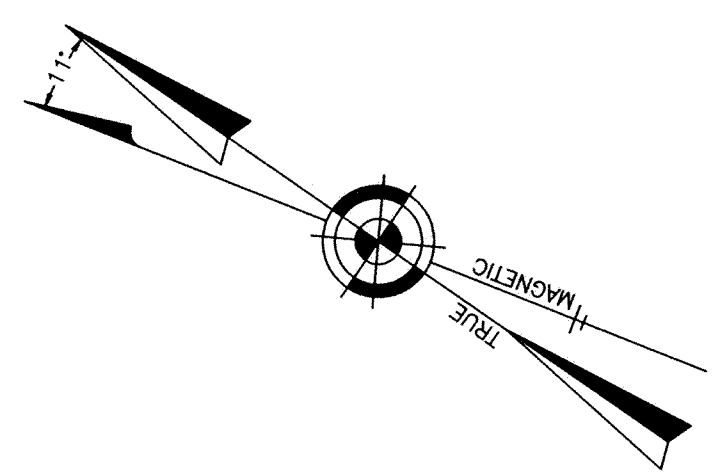


REMINGTON, VERNICK & VENA ENGINEERS  
24 GA 28003300  
9 ALLEN STREET, TOMS RIVER, NJ 08753  
(732) 296-9220, FAX (732) 505-846  
WEB SITE ADDRESS: WWW.RVVE.COM

NEW JERSEY DEPARTMENT OF THE TREASURY  
DIVISION OF TAXATION  
PROPERTY ADMINISTRATION  
APPROVED AS A TAX MAP PURSUANT TO THE AUTHORITY OF  
N.J.S.A. 17:27 AND 17:28  
FOR THE DEPARTMENT OF REVENUE TAXATION

THOMAS C. REILLY, CHIEF FIELD ASSISTANT C.T.A.  
*Santo Calabrese* C.T.A.  
MATTO G. DIORNIATO, SUPERVISING FIELD REPRESENTATIVE

DATE: SEP 14 2005 SERIAL NO. 041

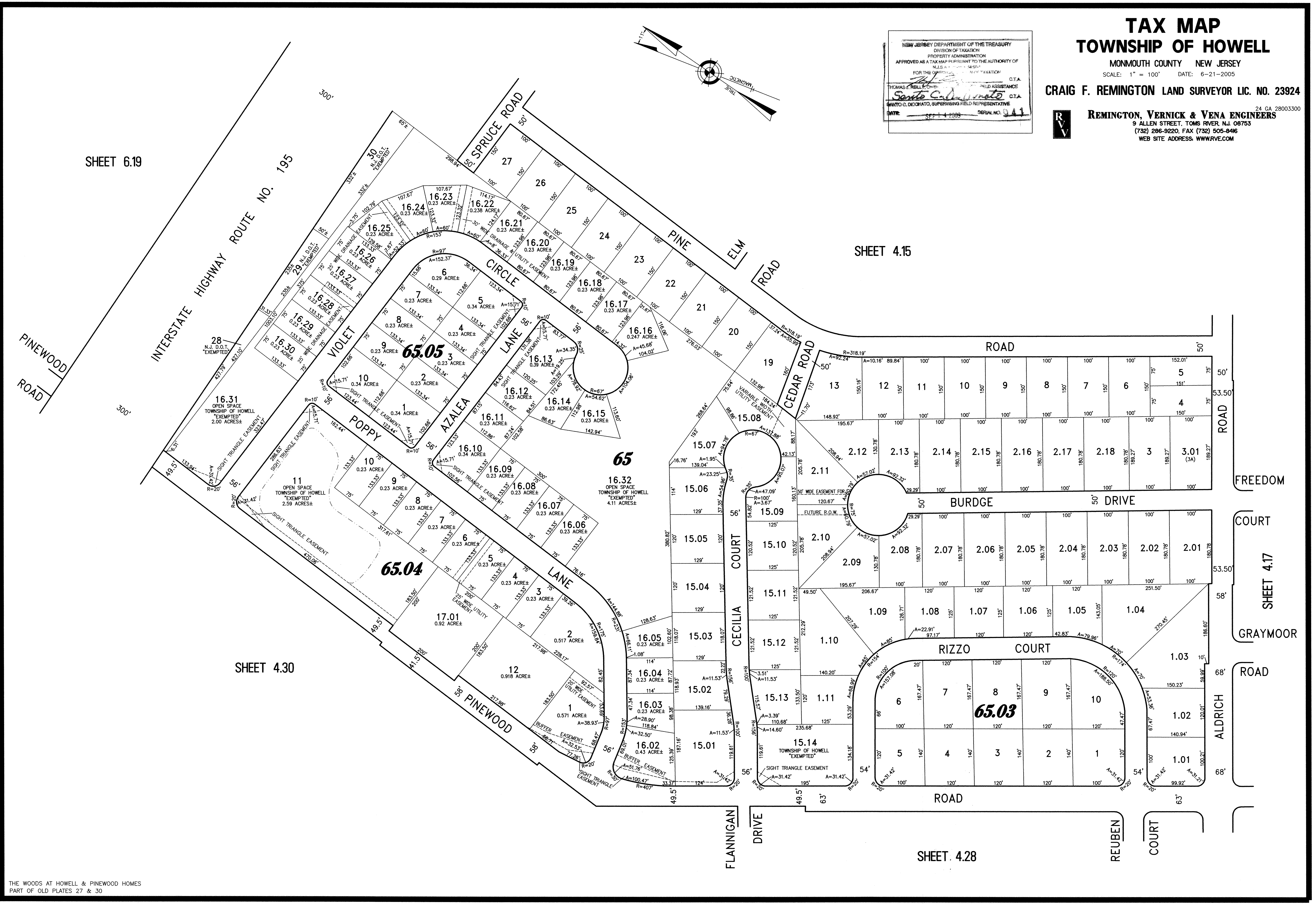


SHEET 6.19

SHEET 4.15

SHEET 4.30

SHEET 4.28



THE WOODS AT HOWELL & PINWOOD HOMES  
PART OF OLD PLATES 27 & 30