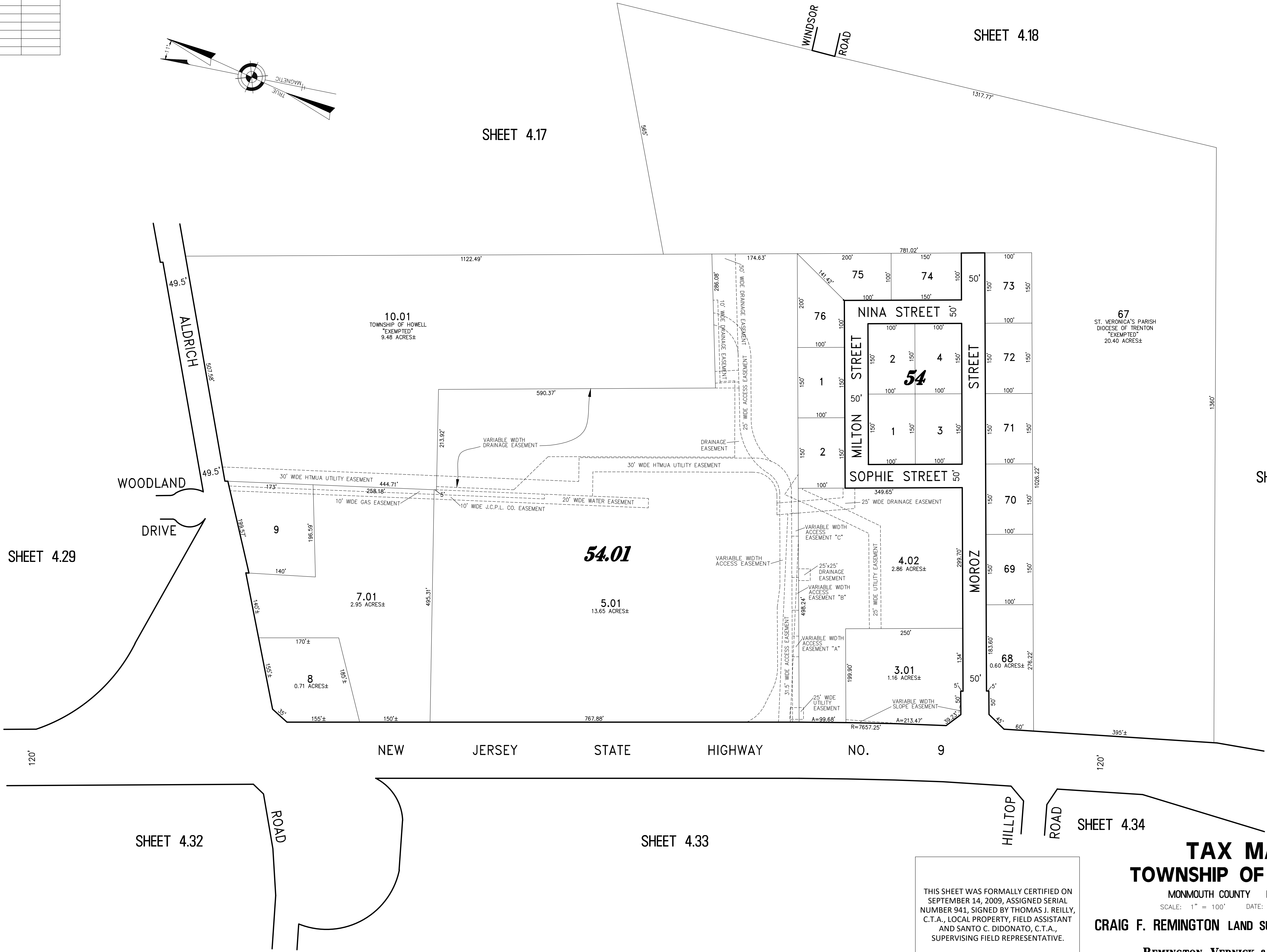
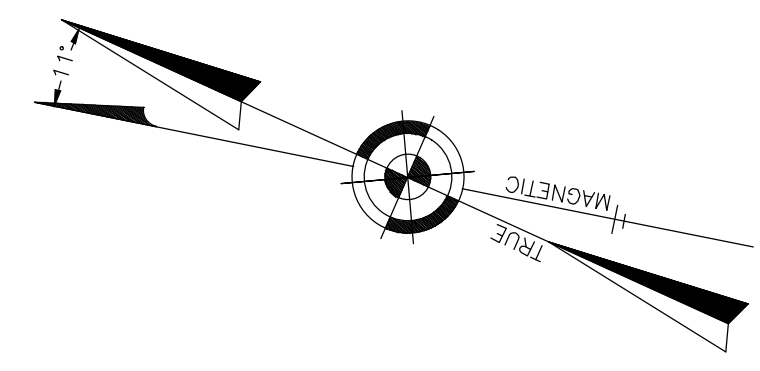


REVISIONS		
DATE	NAME	LIC. No.
12/28/20	GLEN J. LLOYD, P.L.S.	37598



SHEET 4.29

SHEET 4.17

SHEET 4.18

SHEET 4.26

SHEET 4.32

SHEET 4.33

SHEET 4.34

TAX MAP
TOWNSHIP OF HOWELL

MONMOUTH COUNTY NEW JERSEY
 SCALE: 1" = 100' DATE: 6-21-2005

CRAIG F. REMINGTON LAND SURVEYOR LIC. NO. 23924

REMINGTON, VERNICK & VENA ENGINEERS
 9 ALLEN STREET, TOMS RIVER, N.J. 08753
 (732) 286-9220, FAX (732) 505-8416
 WEB SITE ADDRESS: WWW.RVE.COM

THIS SHEET WAS FORMALLY CERTIFIED ON SEPTEMBER 14, 2009, ASSIGNED SERIAL NUMBER 941, SIGNED BY THOMAS J. REILLY, C.T.A., LOCAL PROPERTY, FIELD ASSISTANT AND SANTO C. DIDONATO, C.T.A., SUPERVISING FIELD REPRESENTATIVE.

PINE GROVE PARK
 PART OF OLD PLATES 17, 18, 27 & 28