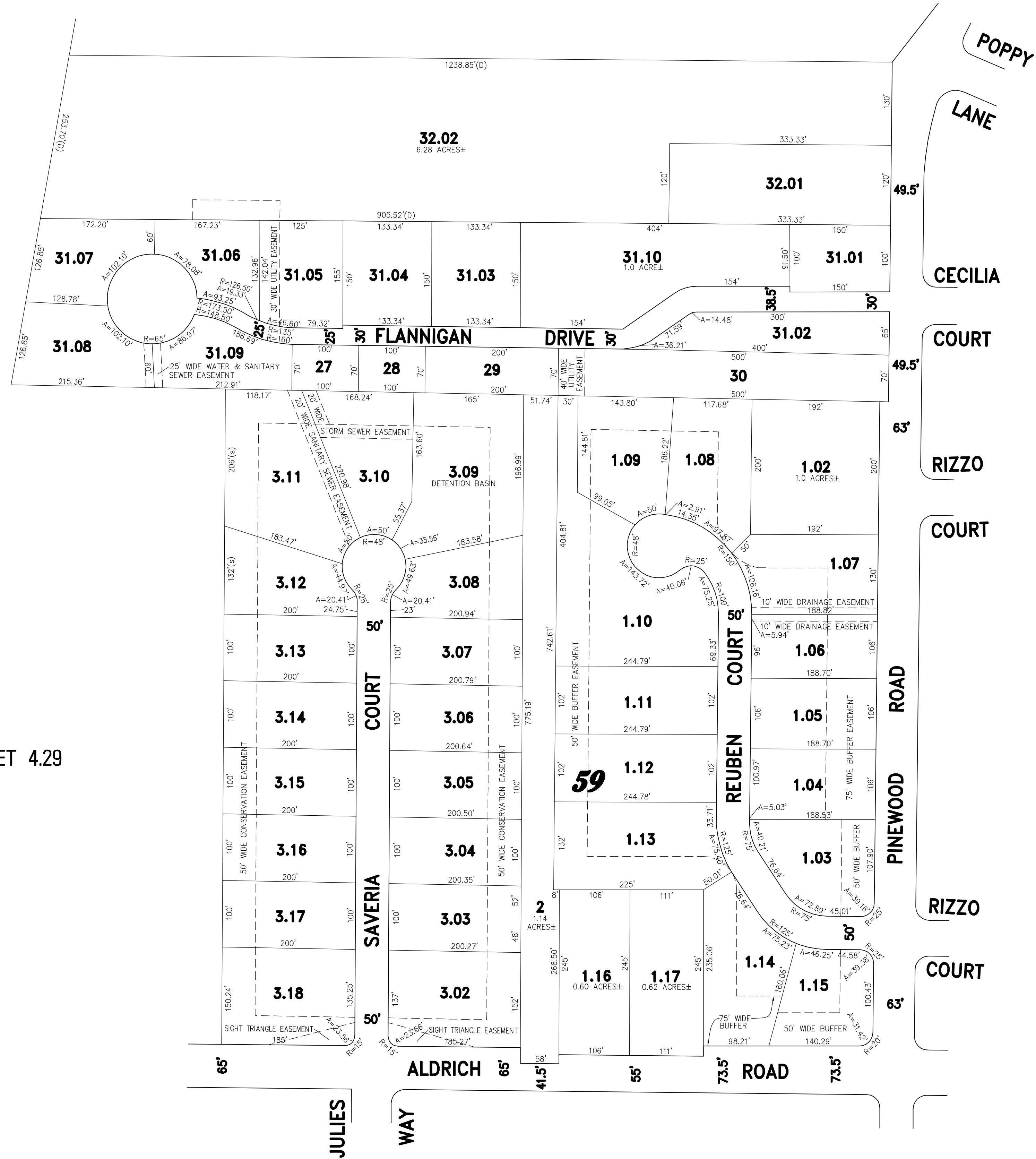
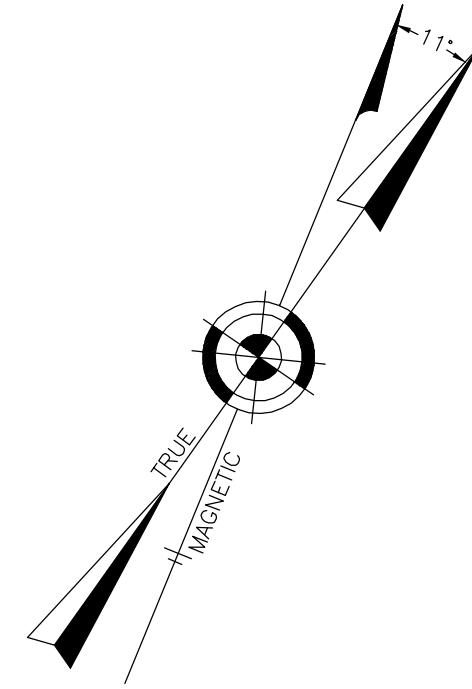


REVISIONS		
DATE	NAME	LIC. No.
07/19/12	RICHARD A. SCHULZ, P.L.S.	37607

SHEET 4.30



SHEET 4.29

SHEET 4.16

SHEET 4.17

REVISED BY REMINGTON AND VERNICK ENGINEERS - 7-16-2008
 REVISED BY REMINGTON AND VERNICK ENGINEERS - 1-3-2007 - 13211055

PINE HILL III & CHARLESTON WOODS
 PART OF OLD PLATES 27 & 28

THIS SHEET WAS FORMALLY CERTIFIED ON
 SEPTEMBER 14, 2009,
 ASSIGNED SERIAL NUMBER 941,
 SIGNED BY THOMAS J. REILLY, C.T.A.,
 LOCAL PROPERTY, FIELD ASSISTANT
 AND SANTO C. DIDONATO, C.T.A.,
 SUPERVISING FIELD REPRESENTATIVE.

TAX MAP TOWNSHIP OF HOWELL

MONMOUTH COUNTY NEW JERSEY
 SCALE: 1" = 100' DATE: 6-21-2005

CRAIG F. REMINGTON LAND SURVEYOR LIC. NO. 23924



REMINGTON, VERNICK & VENA ENGINEERS
 9 ALLEN STREET, TOMS RIVER, N.J. 08753
 (732) 286-9220, FAX (732) 505-9416
 WEB SITE ADDRESS: WWW.RVVE.COM