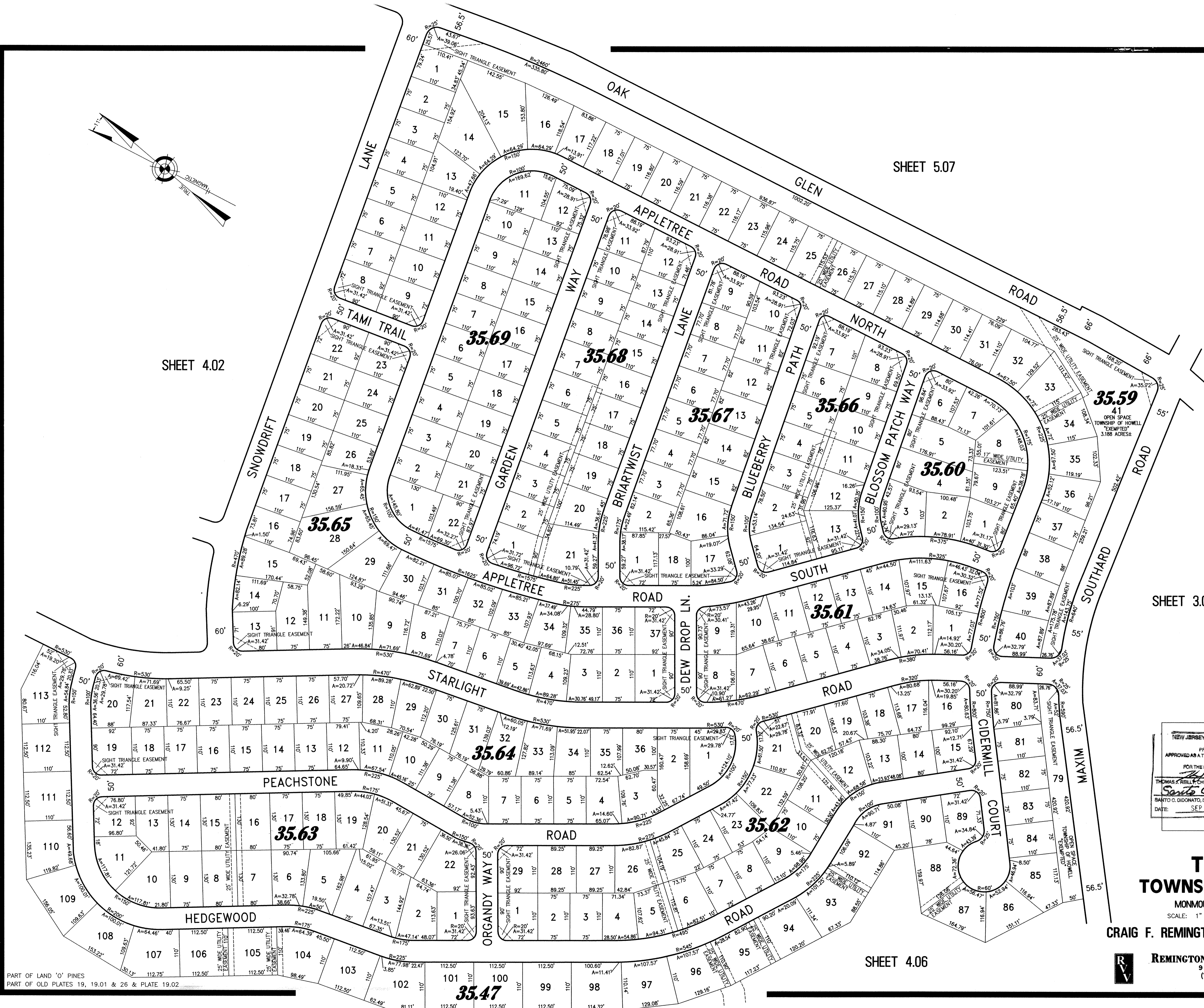


SHEET 4.02

SHEET 5.07

SHEET 3.04

SHEET 4.06



NEW JERSEY DEPARTMENT OF THE TREASURY
 DIVISION OF TAXATION
 PROPERTY ADMINISTRATION
 APPROVED AS A TAX MAP PURSUANT TO THE AUTHORITY OF
 N.J.S.A. 94-15 & 94-20.1
 FOR THE DIRECTOR, DIVISION OF TAXATION

Thomas J. Kelly C.T.A.
 Chief, Local Property Field Assistance

Scott C. DiDonato C.T.A.
 SA/TO C. DI DONATO, SUPERVISOR FIELD REPRESENTATIVE

DATE: SEP 14 2009 SERIAL NO. 944

TAX MAP
TOWNSHIP OF HOWELL

MONMOUTH COUNTY NEW JERSEY
 SCALE: 1" = 100' DATE: 6-21-2005

CRAIG F. REMINGTON LAND SURVEYOR LIC. NO. 23924

RV REMINGTON, VERNICK & VENA ENGINEERS
 24 GA. 28003300
 9 ALLEN STREET, TOMS RIVER, NJ 08753
 (732) 286-9220, FAX (732) 505-8466
 WEB SITE ADDRESS: WWW.RV.COM

PART OF LAND 'O' PINES
 PART OF OLD PLATES 19, 19.01 & 26 & PLATE 19.02