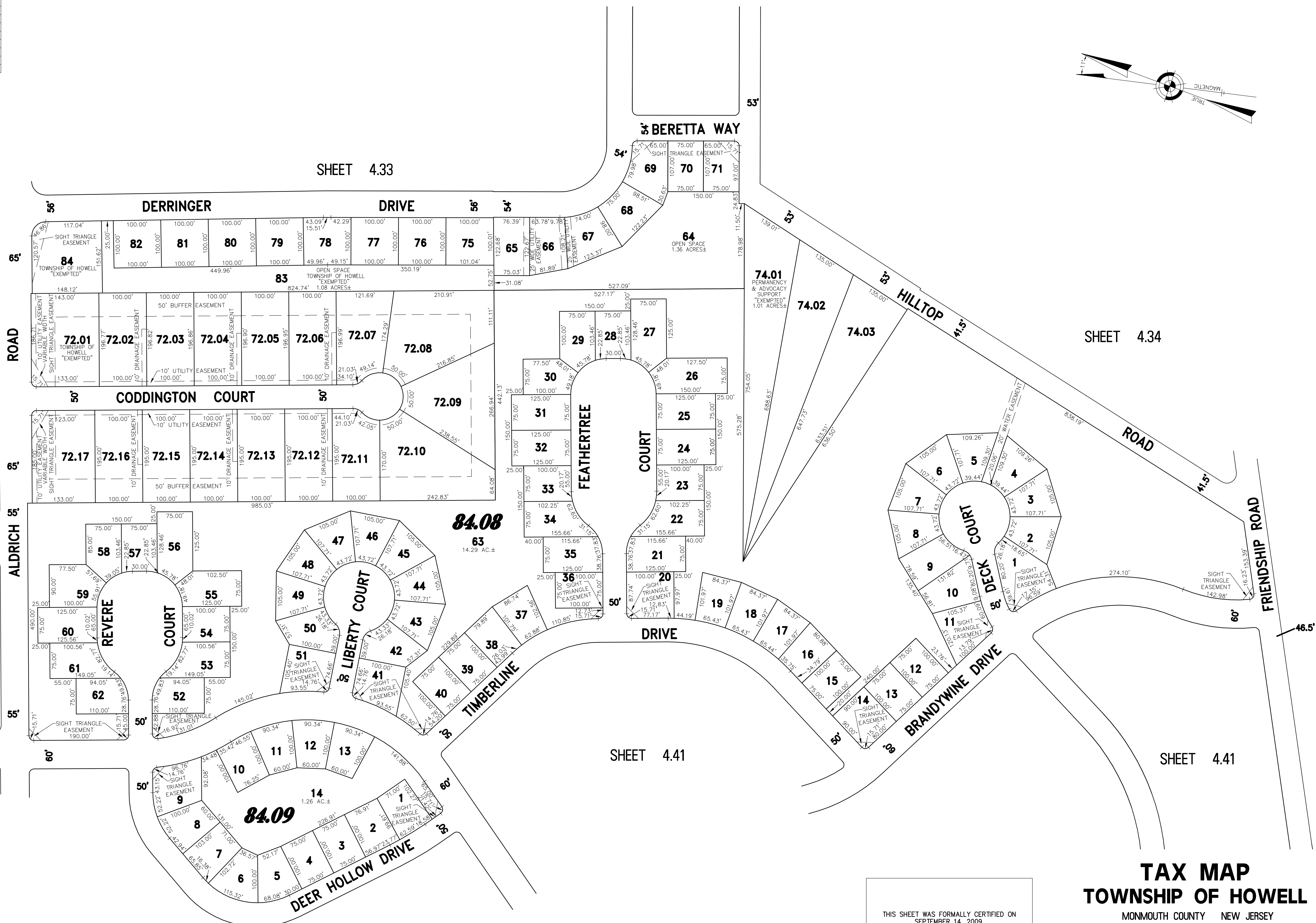


| REVISIONS |                           |          |
|-----------|---------------------------|----------|
| DATE      | NAME                      | LIC. No. |
| 07/27/12  | RICHARD A. SCHULZ, P.L.S. | 37607    |
|           |                           |          |
|           |                           |          |
|           |                           |          |
|           |                           |          |
|           |                           |          |
|           |                           |          |
|           |                           |          |



SHEET 4.43

SHEET 4.34

SHEET 4.41

SHEET 4.41

SHEET 4.46

THIS SHEET WAS FORMALLY CERTIFIED ON  
 SEPTEMBER 14, 2009,  
 ASSIGNED SERIAL NUMBER 941,  
 SIGNED BY THOMAS J. REILLY, C.T.A.,  
 LOCAL PROPERTY, FIELD ASSISTANT  
 AND SANTO C. DIDONATO, C.T.A.,  
 SUPERVISING FIELD REPRESENTATIVE.

**TAX MAP**  
**TOWNSHIP OF HOWELL**

MONMOUTH COUNTY NEW JERSEY  
 SCALE: 1" = 100' DATE: 6-21-2005

CRAIG F. REMINGTON LAND SURVEYOR LIC. NO. 23924



**REMINGTON, VERNICK & VENA ENGINEERS**  
 9 ALLEN STREET, TOMS RIVER, N.J. 08753  
 (732) 286-9220, FAX (732) 505-8416  
 WEB SITE ADDRESS: WWW.RVVE.COM

PART OF U.S. AT CANDLEWOOD & AMERICAN ESTATES  
 PART OF OLD PLATE 17 & 17.02