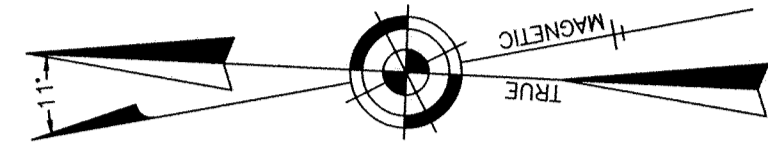
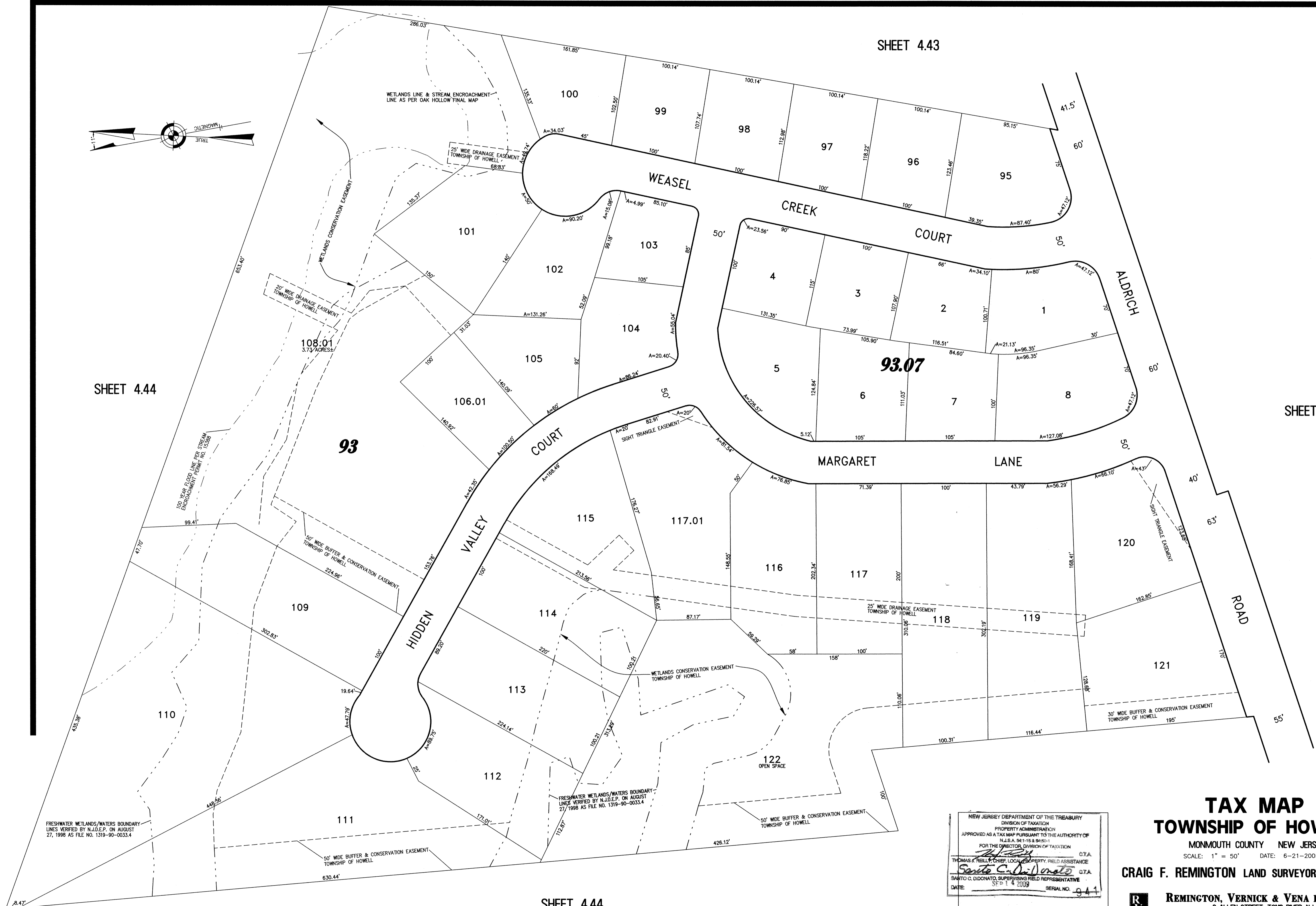


SHEET 4.43



SHEET 4.44

SHEET 4.46



SHEET 4.44

FRESHWATER WETLANDS/WATERS BOUNDARY LINES VERIFIED BY N.J.D.E.P. ON AUGUST 27, 1998 AS FILE NO. 1319-90-0033.4

FRESHWATER WETLANDS/WATERS BOUNDARY LINES VERIFIED BY N.J.D.E.P. ON AUGUST 27, 1998 AS FILE NO. 1319-90-0033.4

NEW JERSEY DEPARTMENT OF THE TREASURY
 DIVISION OF TAXATION
 PROPERTY ADMINISTRATION
 APPROVED AS A TAX MAP PURSUANT TO THE AUTHORITY OF
 N.J.S.A. 54:15-8 & 54:15-9
 FOR THE DIRECTOR, DIVISION OF TAXATION

Thomas J. Reilly C.T.A.
 THOMAS J. REILLY, CHIEF LOCAL PROPERTY FIELD ASSISTANCE

Santo C. DiDonato C.T.A.
 SANTO C. DIDONATO, SUPERVISING FIELD REPRESENTATIVE

DATE: SEP 14 2009 SERIAL NO. 941

TAX MAP
TOWNSHIP OF HOWELL
 MONMOUTH COUNTY NEW JERSEY
 SCALE: 1" = 50' DATE: 6-21-2005
CRAIG F. REMINGTON LAND SURVEYOR LIC. NO. 23924

REMINGTON, VERNICK & VENA ENGINEERS
 9 ALLEN STREET, TOMS RIVER, NJ 08753
 (732) 286-9220, FAX (732) 505-9446
 WEB SITE ADDRESS: WWW.RVVE.COM

OAK HOLLOW II PART OF OLD PLATE 28 & PART OF OLD PLATE 17