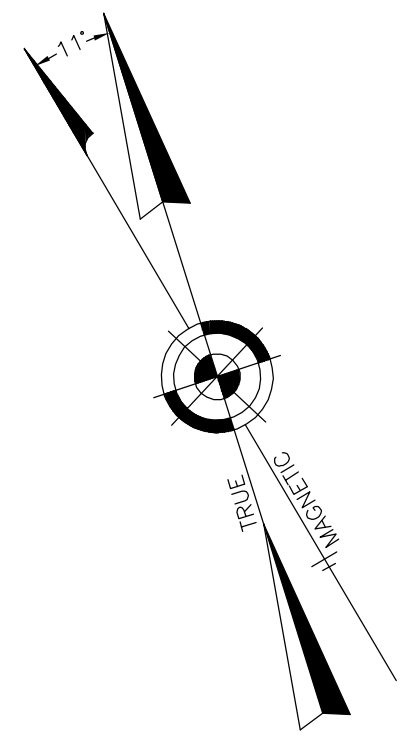


| REVISIONS |                           |          |
|-----------|---------------------------|----------|
| DATE      | NAME                      | LIC. No. |
| 05/27/11  | RICHARD A. SCHULZ, P.L.S. | 37607    |
|           |                           |          |
|           |                           |          |
|           |                           |          |
|           |                           |          |



SHEET 4.51

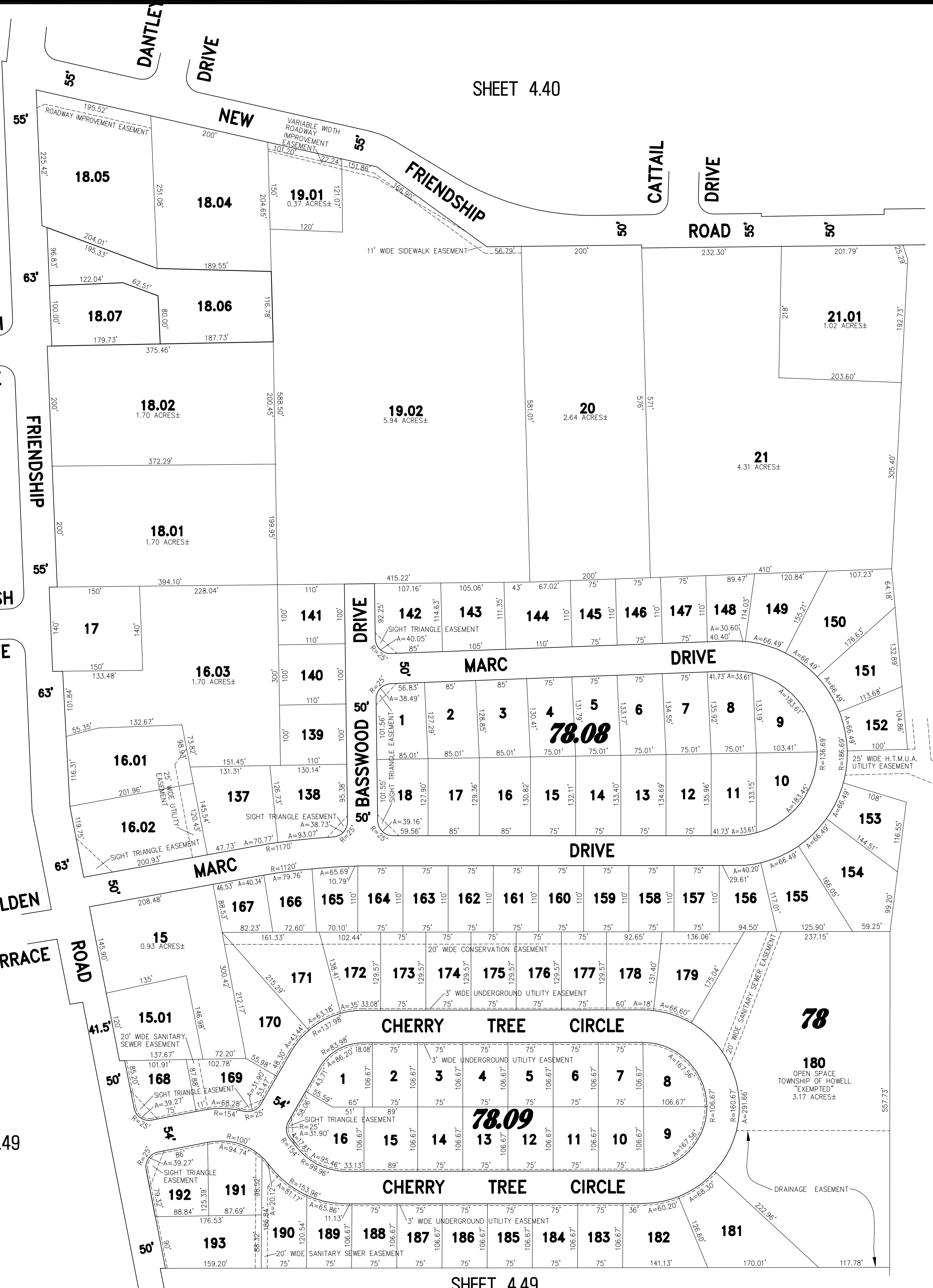
SHEET 4.40

SHEET 4.50

SHEET 4.49

SHEET 4.49

SHEET 4.49



THIS SHEET WAS FORMALLY CERTIFIED ON  
 SEPTEMBER 14, 2009,  
 ASSIGNED SERIAL NUMBER 941,  
 SIGNED BY THOMAS J. REILLY, C.T.A.,  
 LOCAL PROPERTY, FIELD ASSISTANT  
 AND SANTO C. DIDONATO, C.T.A.,  
 SUPERVISING FIELD REPRESENTATIVE.

### TAX MAP TOWNSHIP OF HOWELL

MONMOUTH COUNTY NEW JERSEY  
 SCALE: 1" = 100' DATE: 6-21-2005

CRAIG F. REMINGTON LAND SURVEYOR LIC. NO. 23924



REMINGTON, VERNICK & VENA ENGINEERS  
 9 ALLEN STREET, TOMS RIVER, NJ 08753  
 (732) 286-9220, FAX (732) 505-9416  
 WEB SITE ADDRESS: WWW.RVVE.COM

PART OF HERITAGE WOODS  
 PART OF OLD PLATE 37