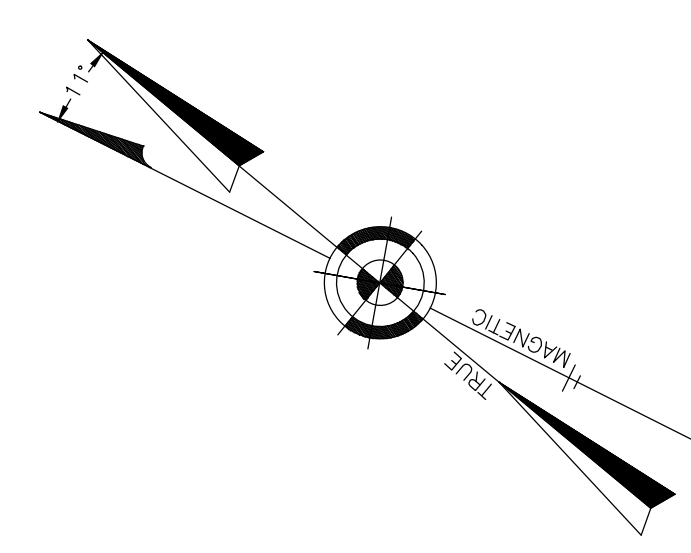
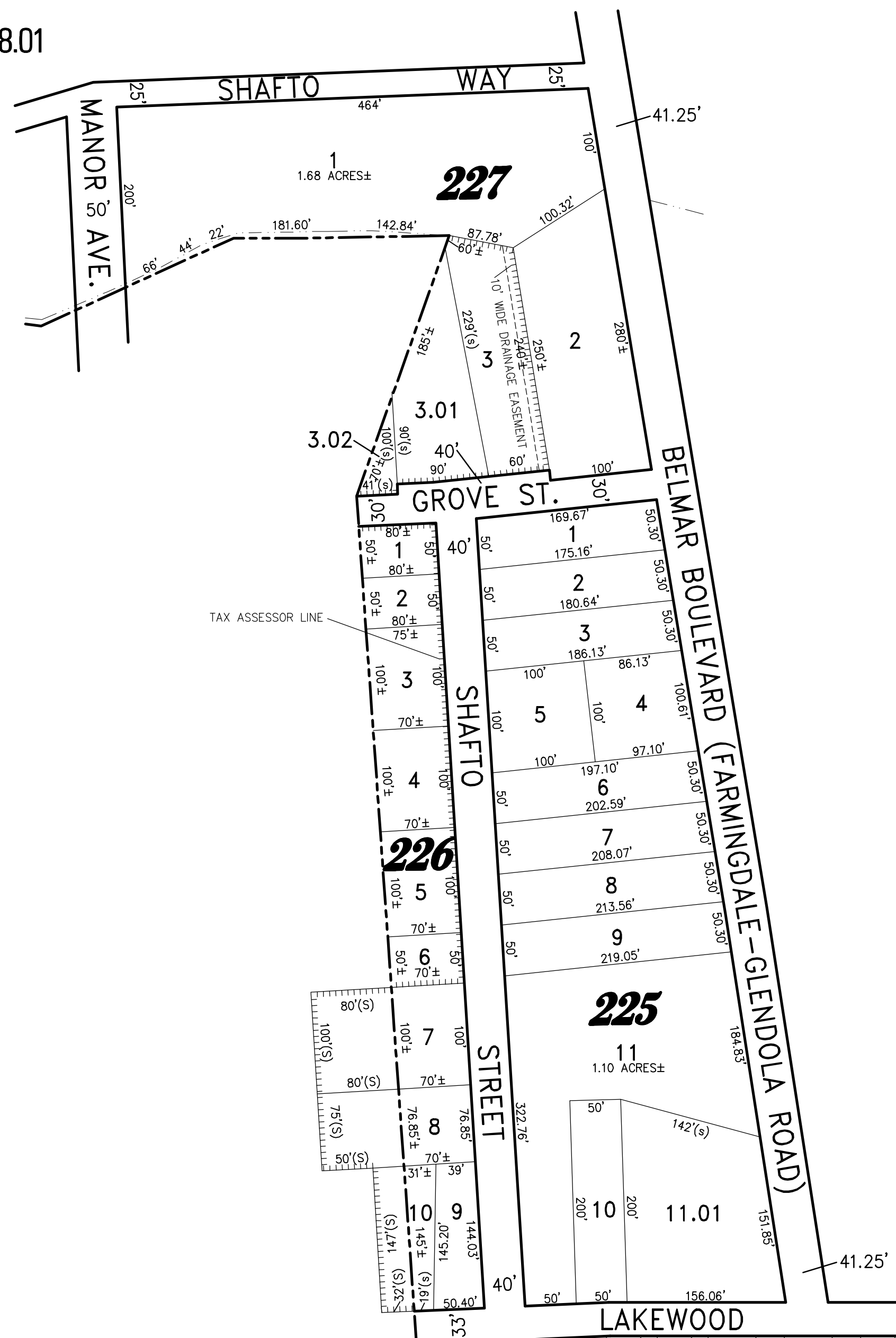


NOTE:
THIS SHEET HAS BEEN DRAWN USING COMPUTER AIDED
DRAFTING/DESIGN (CAD/D) AND COORDINATE GEOMETRY (COCO).

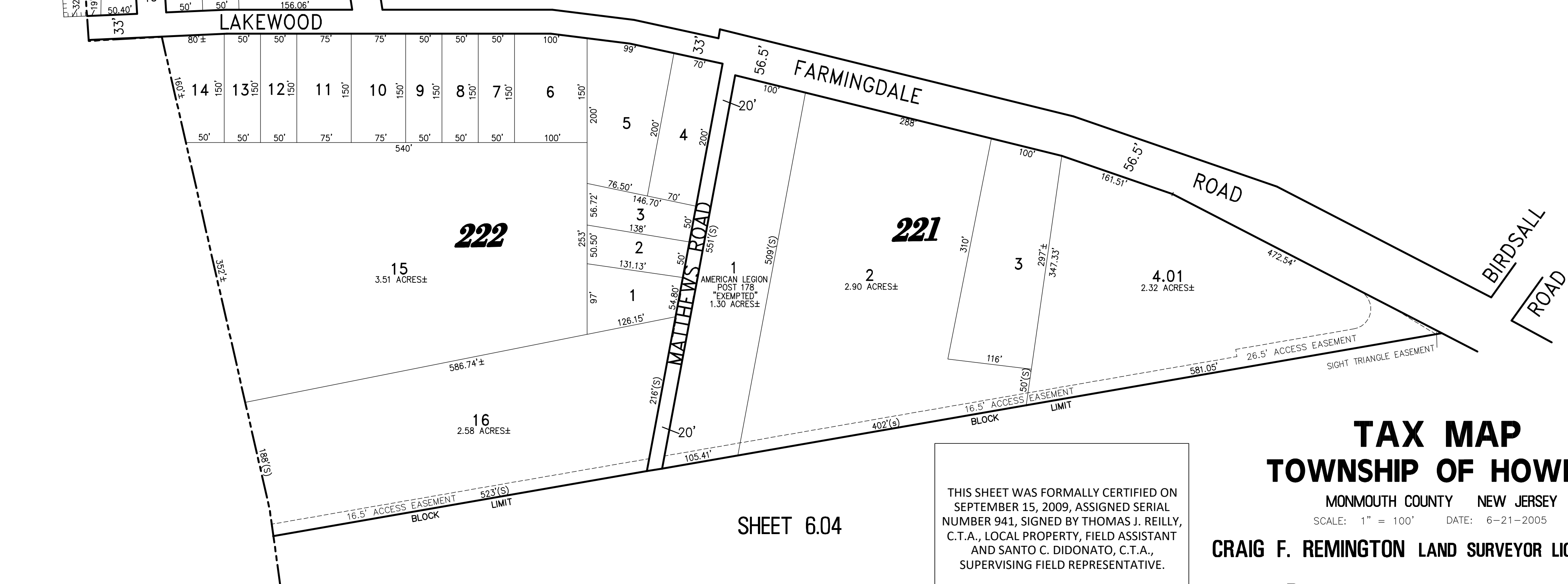
REVISIONS		
DATE	NAME	LIC. No.
06/06/11	RICHARD A. SCHULZ, P.L.S.	37607
02/15/16	GLEN J. LLOYD, P.L.S.	37598
12/15/17	GLEN J. LLOYD, P.L.S.	37598
12/28/20	GLEN J. LLOYD, P.L.S.	37598

SHEET 8.01



SHEET 6.02

**BOROUGH OF FARMINGDALE
COUNTY OF MONMOUTH**



SHEET 6.04

THIS SHEET WAS FORMALLY CERTIFIED ON
SEPTEMBER 15, 2009, ASSIGNED SERIAL
NUMBER 941, SIGNED BY THOMAS J. REILLY,
C.T.A., LOCAL PROPERTY, FIELD ASSISTANT
AND SANTO C. DIDONATO, C.T.A.,
SUPERVISING FIELD REPRESENTATIVE.

**TAX MAP
TOWNSHIP OF HOWELL**

MONMOUTH COUNTY NEW JERSEY
SCALE: 1" = 100' DATE: 6-21-2005

CRAIG F. REMINGTON LAND SURVEYOR LIC. NO. 23924

REMINGTON, VERNICK & VENA ENGINEERS
24 GA 28003300
9 ALLEN STREET, TOMS RIVER, N.J. 08753
(732) 286-9220, FAX (732) 505-8416
WEB SITE ADDRESS: WWW.RVE.COM