

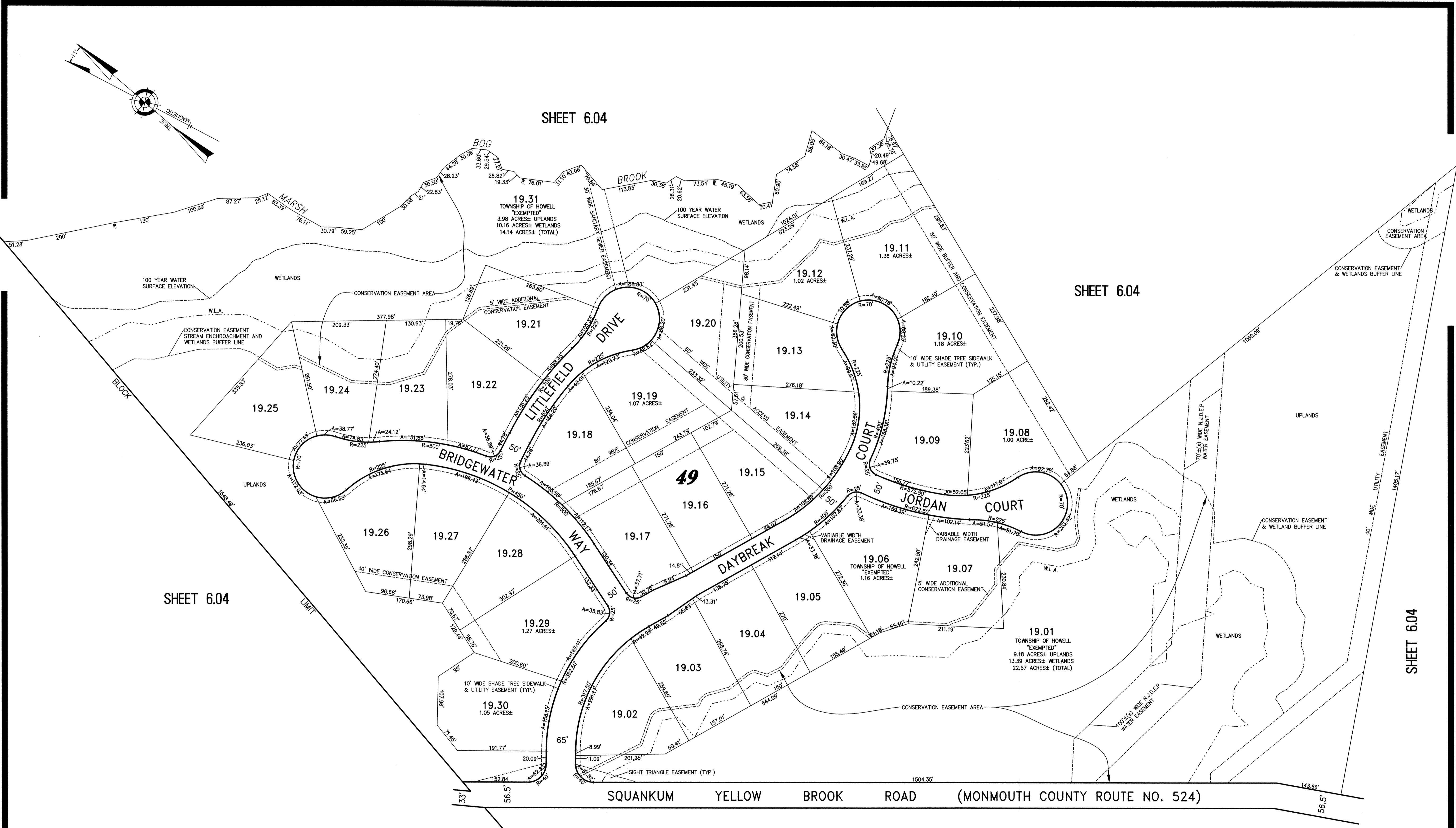
SHEET 6.04

SHEET 6.04

SHEET 6.04

SHEET 6.04

SHEET 6.04



THE PRESERVE
PART OF OLD PLATES 72 & 73

NEW JERSEY DEPARTMENT OF THE TREASURY
DIVISION OF TAXATION
PROPERTY ADMINISTRATION
APPROVED AS A TAX MAP PURSUANT TO THE AUTHORITY OF
N.J.S.A. 17:27 & 17:28
FOR THE DIRECTOR, DIVISION OF TAXATION
DATE: SEP 15 2005 SERIAL NO. 941

TAX MAP
TOWNSHIP OF HOWELL
MONMOUTH COUNTY NEW JERSEY
SCALE: 1" = 100' DATE: 6-21-2005
CRAIG F. REMINGTON LAND SURVEYOR LIC. NO. 23924
REMINGTON, VERNICK & VENA ENGINEERS
24 GA 28003300
9 ALLEN STREET, TOMS RIVER, NJ 08753
(732) 286-9220, FAX (732) 505-8416
WEB SITE ADDRESS: WWW.RVVE.COM