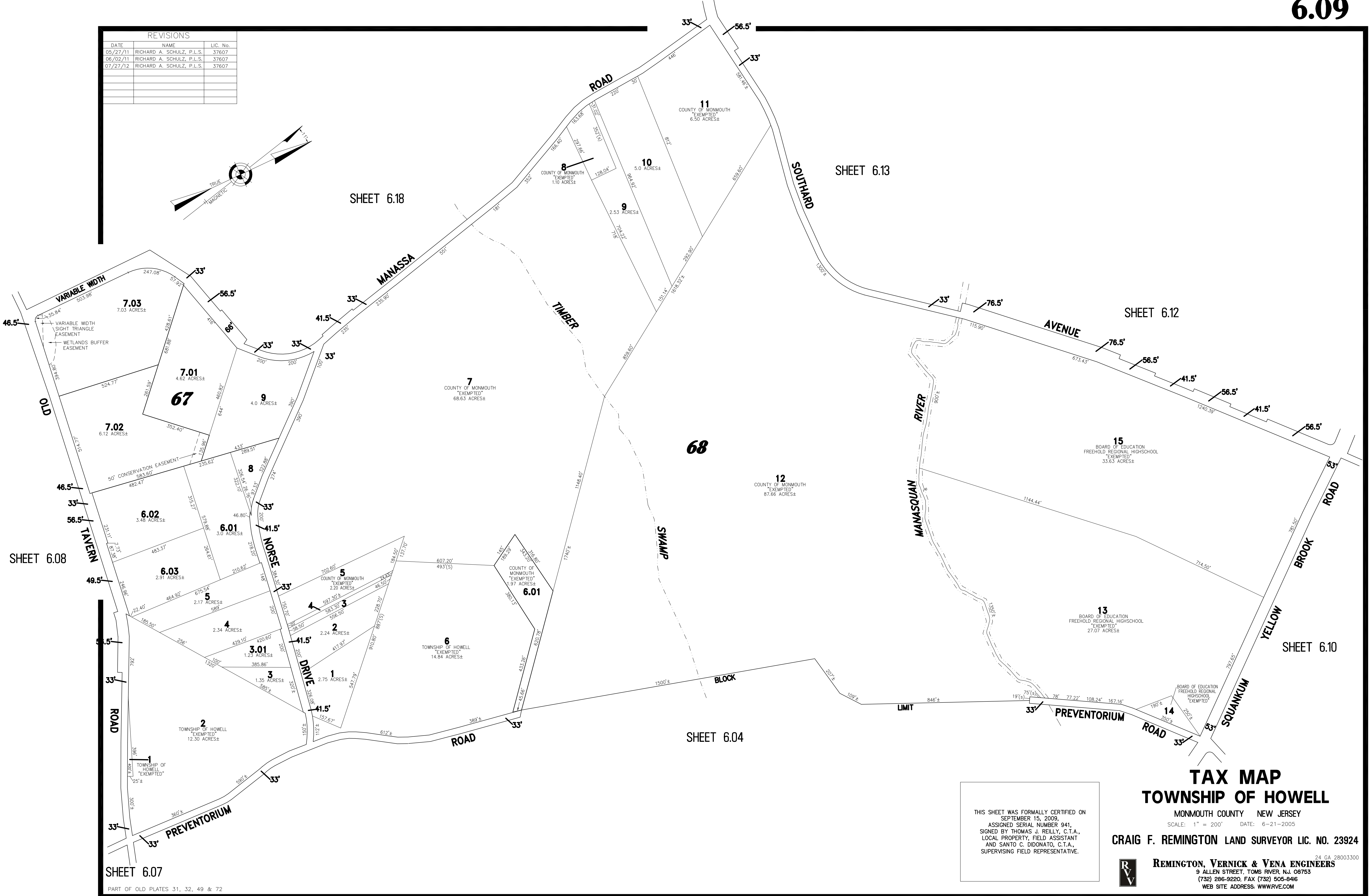
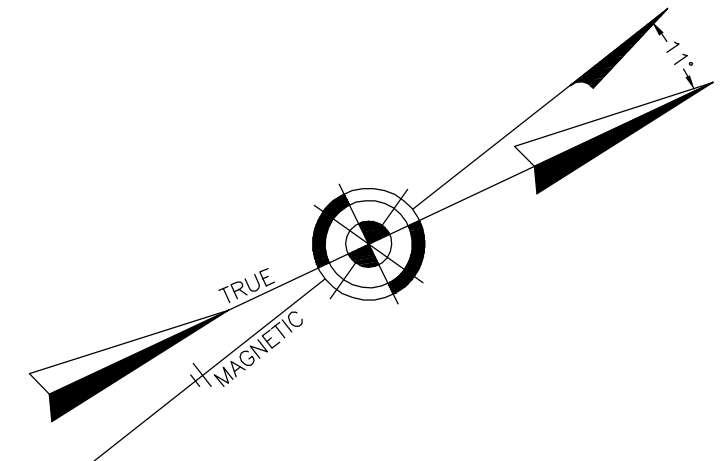


REVISIONS		
DATE	NAME	LIC. No.
05/27/11	RICHARD A. SCHULZ, P.L.S.	37607
06/02/11	RICHARD A. SCHULZ, P.L.S.	37607
07/27/12	RICHARD A. SCHULZ, P.L.S.	37607



SHEET 6.07

PART OF OLD PLATES 31, 32, 49 & 72

SHEET 6.18

SHEET 6.13

SHEET 6.12

SHEET 6.10

SHEET 6.04

THIS SHEET WAS FORMALLY CERTIFIED ON SEPTEMBER 15, 2009, ASSIGNED SERIAL NUMBER 941, SIGNED BY THOMAS J. REILLY, C.T.A., LOCAL PROPERTY, FIELD ASSISTANT AND SANTO C. DIDONATO, C.T.A., SUPERVISING FIELD REPRESENTATIVE.

### TAX MAP TOWNSHIP OF HOWELL

MONMOUTH COUNTY NEW JERSEY  
SCALE: 1" = 200' DATE: 6-21-2005

CRAIG F. REMINGTON LAND SURVEYOR LIC. NO. 23924



REMINGTON, VERNICK & VENA ENGINEERS  
24 GA 28003300  
9 ALLEN STREET, TOMS RIVER, NJ 08753  
(732) 286-9220, FAX (732) 505-8416  
WEB SITE ADDRESS: WWW.RVVE.COM