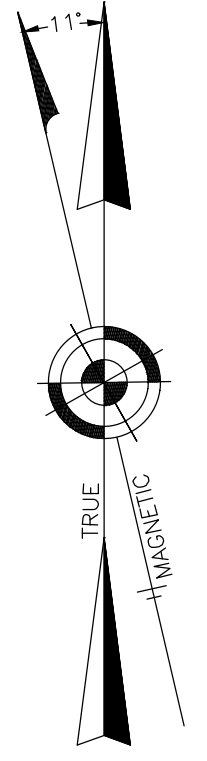
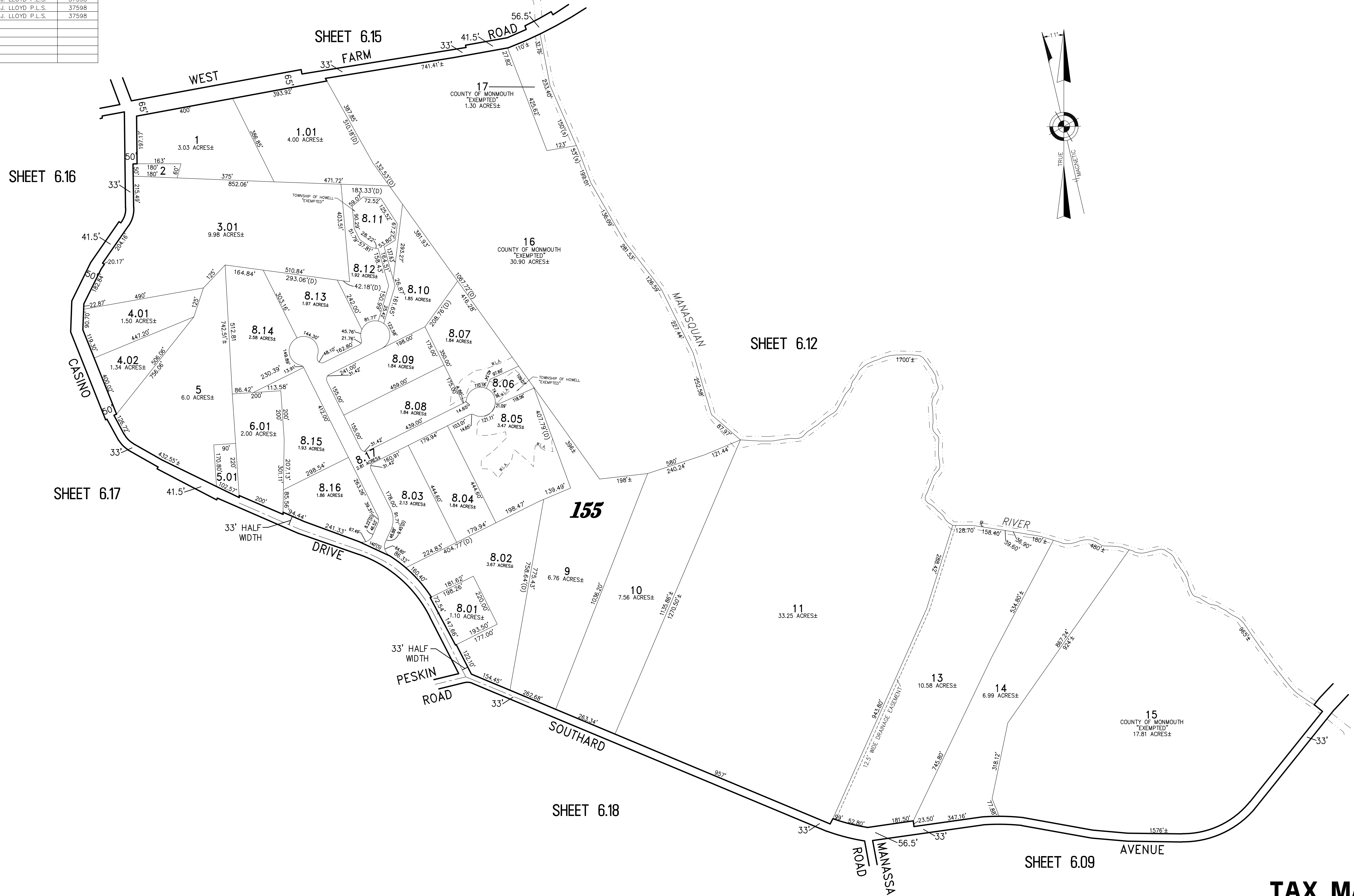


REVISIONS		
DATE	NAME	LIC. No.
12/15/17	GLEN J. LLOYD P.L.S.	37598
12/12/18	GLEN J. LLOYD P.L.S.	37598
12/28/20	GLEN J. LLOYD P.L.S.	37598



THIS SHEET WAS FORMALLY CERTIFIED ON SEPTEMBER 15, 2009, ASSIGNED SERIAL NUMBER 941, SIGNED BY THOMAS J. REILLY, C.T.A., LOCAL PROPERTY, FIELD ASSISTANT AND SANTO C. DIDONATO, C.T.A., SUPERVISING FIELD REPRESENTATIVE.

**TAX MAP  
TOWNSHIP OF HOWELL**

MONMOUTH COUNTY NEW JERSEY  
SCALE: 1" = 200' DATE: 6-21-2005

**CRAIG F. REMINGTON LAND SURVEYOR LIC. NO. 23924**

**REMINGTON, VERNICK & VENA ENGINEERS**  
24 GA 28003300  
9 ALLEN STREET, TOMS RIVER, N.J. 08753  
(732) 286-9220, FAX (732) 505-8416  
WEB SITE ADDRESS: WWW.RVE.COM