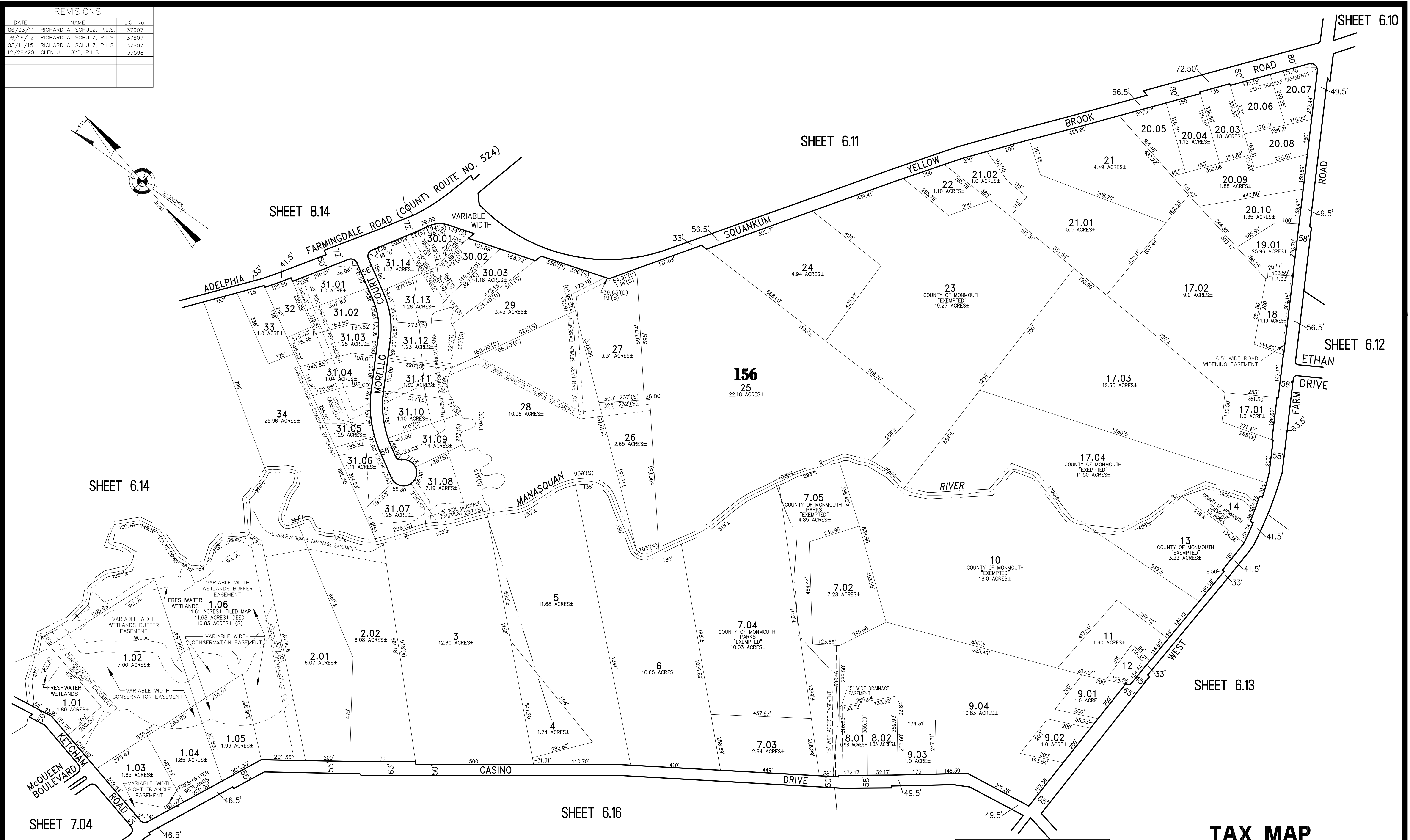
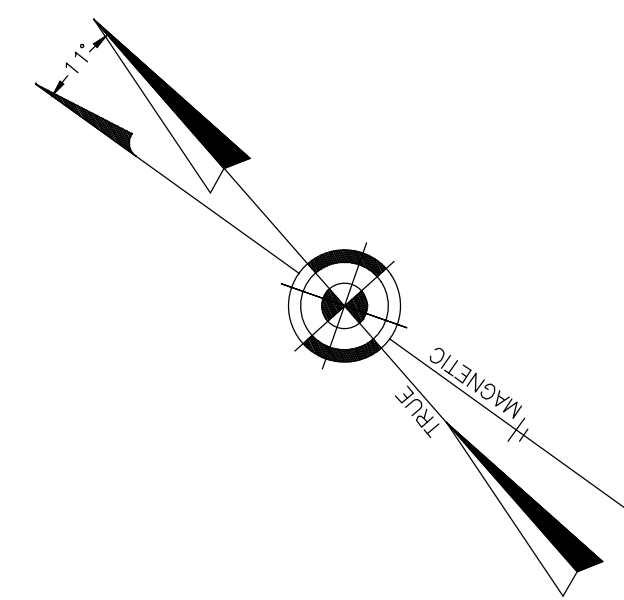


REVISIONS		
DATE	NAME	LIC. No.
06/03/11	RICHARD A. SCHULZ, P.L.S.	37607
08/16/12	RICHARD A. SCHULZ, P.L.S.	37607
03/11/15	RICHARD A. SCHULZ, P.L.S.	37607
12/28/20	GLEN J. LLOYD, P.L.S.	37598



REVISED BY REMINGTON AND VERNICK ENGINEERS - 1-3-2007 - 132.11055

MORELLO COURT  
PART OF OLD PLATES 48, 61, 62 & 63

THIS SHEET WAS FORMALLY CERTIFIED ON SEPTEMBER 14, 2009, ASSIGNED SERIAL NUMBER 941, SIGNED BY THOMAS J. REILLY, C.T.A., LOCAL PROPERTY, FIELD ASSISTANT AND SANTO C. DIDONATO, C.T.A., SUPERVISING FIELD REPRESENTATIVE.

**TAX MAP**  
**TOWNSHIP OF HOWELL**  
MONMOUTH COUNTY NEW JERSEY  
SCALE: 1" = 200' DATE: 6-21-2005  
**CRAIG F. REMINGTON LAND SURVEYOR LIC. NO. 23924**  
**REMINGTON, VERNICK & VENA ENGINEERS**  
24 GA. 28003300  
9 ALLEN STREET, TOMS RIVER, N.J. 08753  
(732) 286-9220, FAX (732) 505-8416  
WEB SITE ADDRESS: WWW.RVE.COM