

# TAX MAP TOWNSHIP OF HOWELL

MONMOUTH COUNTY NEW JERSEY  
SCALE: 1" = 200' DATE: 6-21-2005

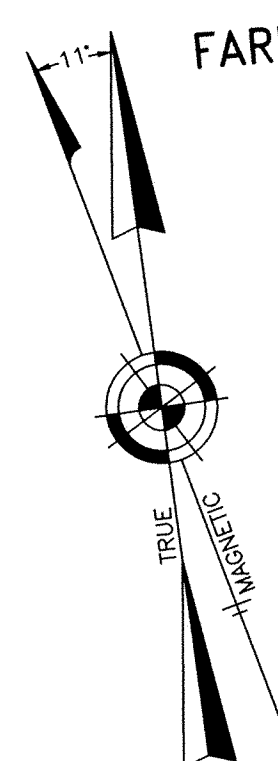
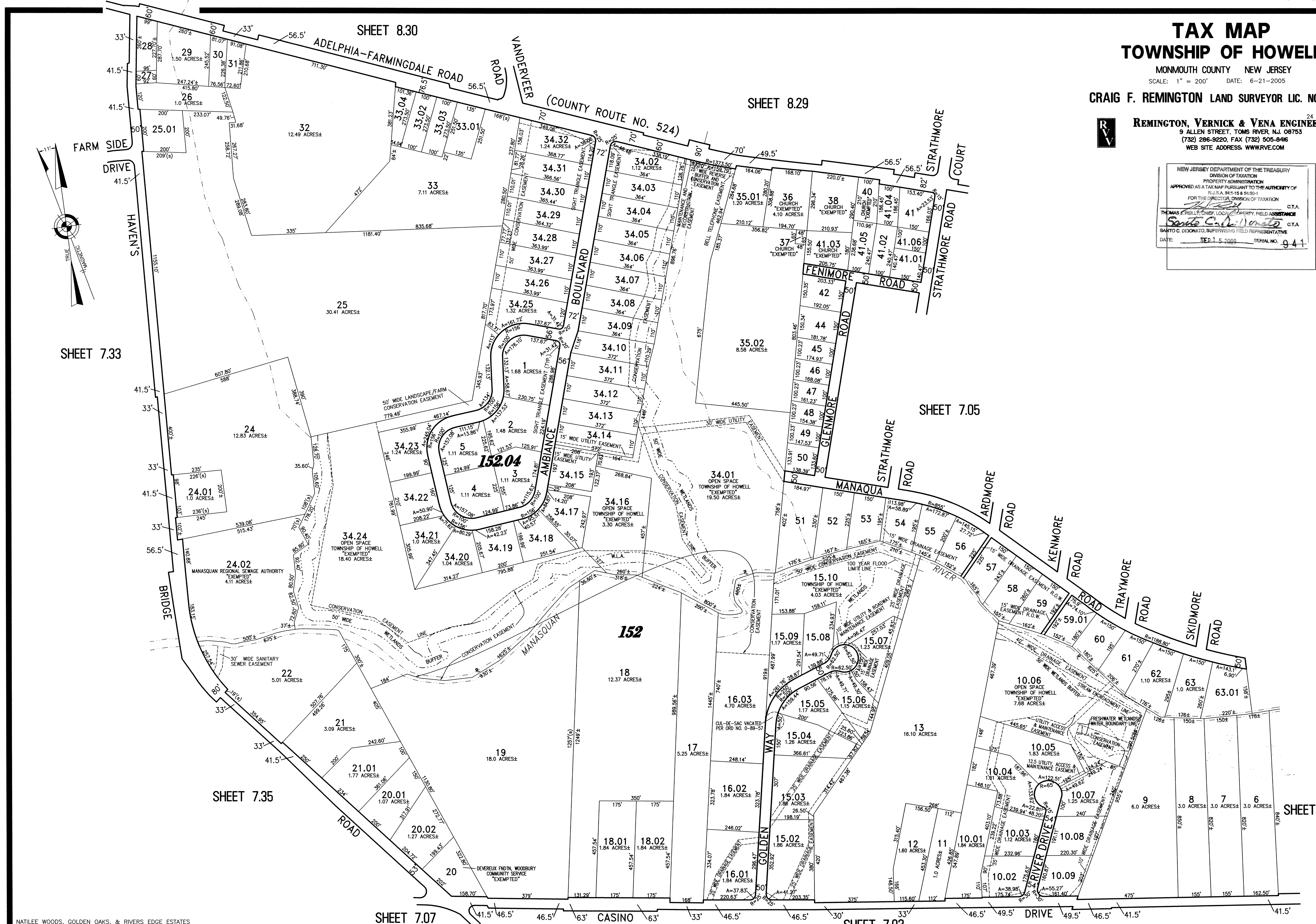
CRAIG F. REMINGTON LAND SURVEYOR LIC. NO. 23924



REMINGTON, VERNICK & VENA ENGINEERS  
9 ALLEN STREET, TOMS RIVER, N.J. 08753  
(732) 286-9220, FAX (732) 505-846  
WEB SITE ADDRESS: WWW.RVVE.COM

24 GA 28003300

NEW JERSEY DEPARTMENT OF THE TREASURY  
DIVISION OF TAXATION  
PROPERTY ADMINISTRATION  
APPROVED AS A TAX MAP PURSUANT TO THE AUTHORITY OF  
N.J.S.A. 54:15 & 54:50-1  
FOR THE DIRECTOR, DIVISION OF TAXATION  
*Thomas C. DiDonato* C.T.A.  
THOMAS C. DIDONATO, CHIEF, LOCAL SAFETY, FIELD ASSISTANCE  
*Thomas C. DiDonato* C.T.A.  
SAINTO C. DIDONATO, SUPERVISING FIELD REPRESENTATIVE  
DATE: SEP 15 2005 SERIAL NO. 941



NATILEE WOODS, GOLDEN OAKS, & RIVERS EDGE ESTATES  
PART OF OLD PLATES 45 & 46