

REVISIONS		
DATE	NAME	LIC. No.
07/31/12	RICHARD A. SCHULZ, P.L.S.	37607
05/19/15	RICHARD A. SCHULZ, P.L.S.	37607
02/15/16	GLENN J. LLOYD, P.L.S.	37598
12/28/20	GLENN J. LLOYD, P.L.S.	37598

SHEET 7.21

SHEET 7.08

SHEET 7.20

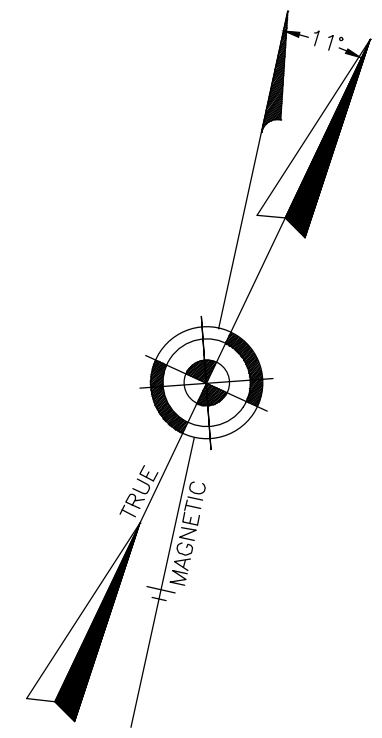
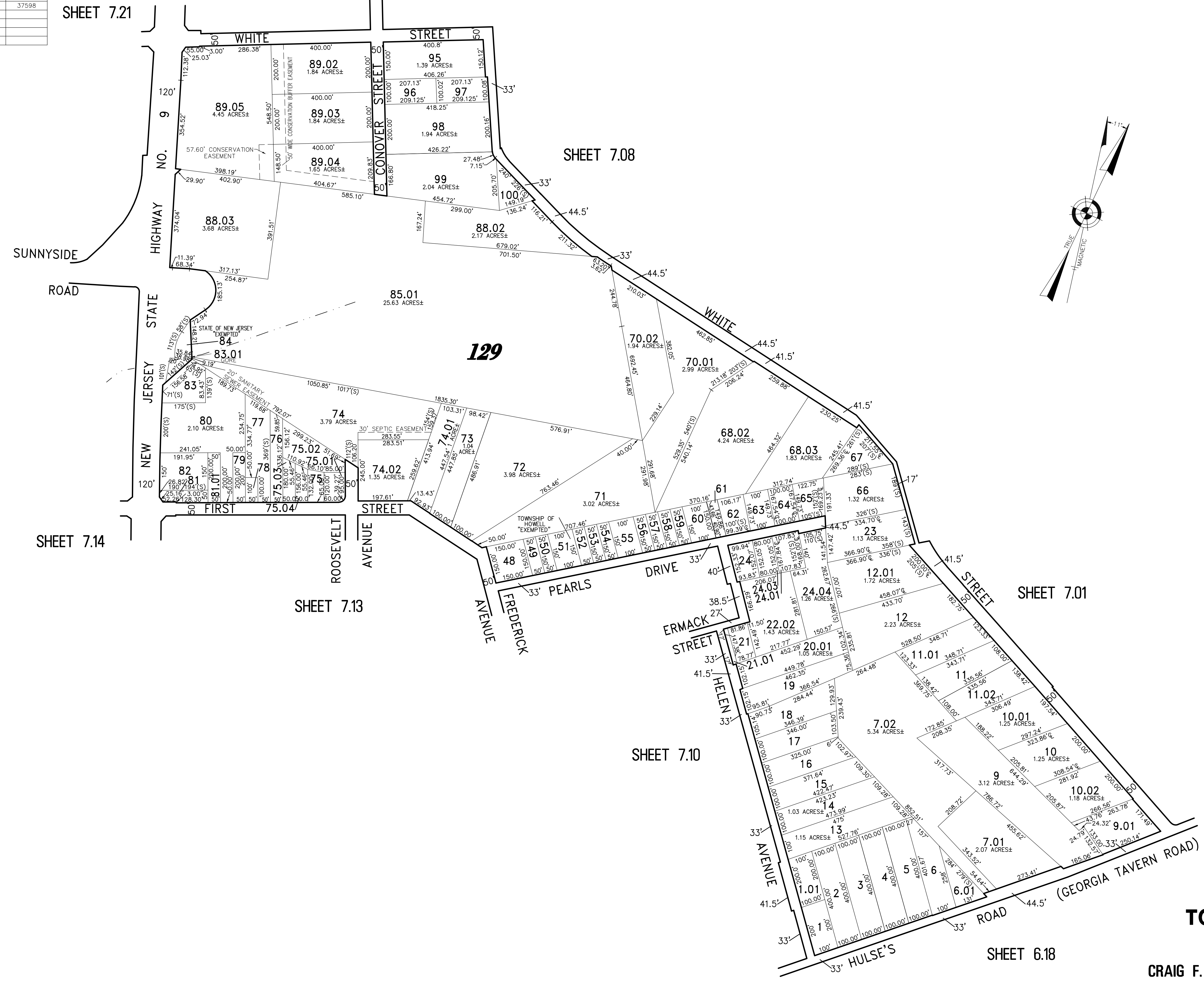
SHEET 7.14

SHEET 7.13

SHEET 7.10

SHEET 7.01

SHEET 6.18



THIS SHEET WAS FORMALLY CERTIFIED ON SEPTEMBER 15, 2009, ASSIGNED SERIAL NUMBER 941, SIGNED BY THOMAS J. REILLY, C.T.A., LOCAL PROPERTY, FIELD ASSISTANT AND SANTO C. DIDONATO, C.T.A., SUPERVISING FIELD REPRESENTATIVE.

TAX MAP TOWNSHIP OF HOWELL

MONMOUTH COUNTY NEW JERSEY
SCALE: 1" = 200' DATE: 6-21-2005

CRAIG F. REMINGTON LAND SURVEYOR LIC. NO. 23924

REMINGTON, VERNICK & VENA ENGINEERS
24 GA. 28003300
9 ALLEN STREET, TOMS RIVER, N.J. 08753
(732) 286-9220, FAX (732) 505-8416
WEB SITE ADDRESS: WWW.RVE.COM

REVISED BY REMINGTON AND VERNICK ENGINEERS - 5-22-2008 - 1321T062
REVISED BY REMINGTON AND VERNICK ENGINEERS - 1-3-2007 - 1321T055

PART OF OLD PLATES 29 & 44