

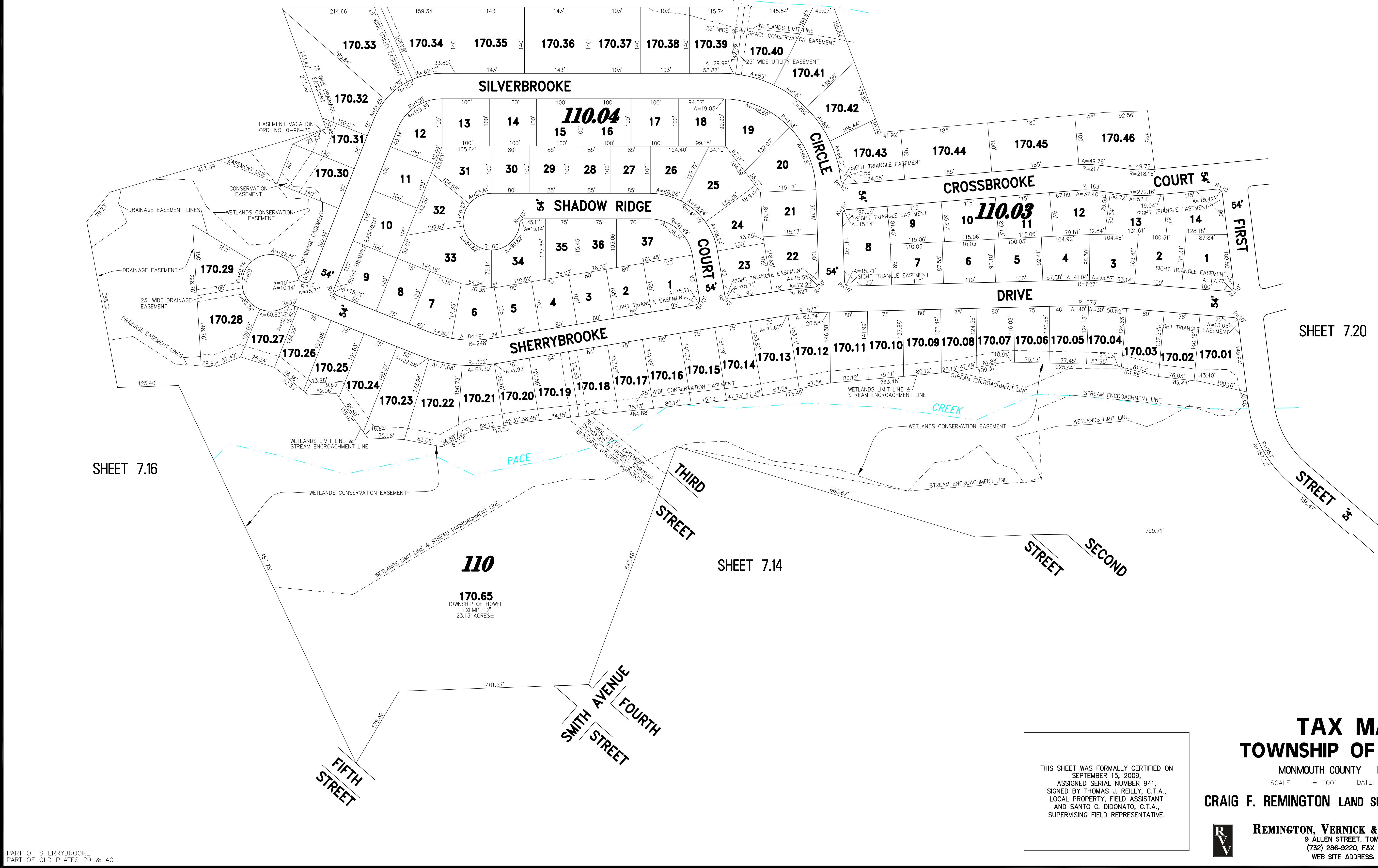
| REVISIONS | | |
|-----------|---------------------------|----------|
| DATE | NAME | LIC. No. |
| 05/26/11 | RICHARD A. SCHULZ, P.L.S. | 37607 |
| | | |
| | | |
| | | |
| | | |
| | | |
| | | |
| | | |

SHEET 7.18

SHEET 7.20

SHEET 7.16

SHEET 7.14



THIS SHEET WAS FORMALLY CERTIFIED ON
 SEPTEMBER 15, 2009,
 ASSIGNED SERIAL NUMBER 941,
 SIGNED BY THOMAS J. REILLY, C.T.A.,
 LOCAL PROPERTY, FIELD ASSISTANT
 AND SANTO C. DIDONATO, C.T.A.,
 SUPERVISING FIELD REPRESENTATIVE.

TAX MAP
TOWNSHIP OF HOWELL

MONMOUTH COUNTY NEW JERSEY
 SCALE: 1" = 100' DATE: 6-21-2005

CRAIG F. REMINGTON LAND SURVEYOR LIC. NO. 23924



REMINGTON, VERNICK & VENA ENGINEERS
 9 ALLEN STREET, TOMS RIVER, NJ, 08753
 (732) 286-9220, FAX (732) 505-8416
 WEB SITE ADDRESS: WWW.RVVE.COM

PART OF SHERRYBROOKE
 PART OF OLD PLATES 29 & 40