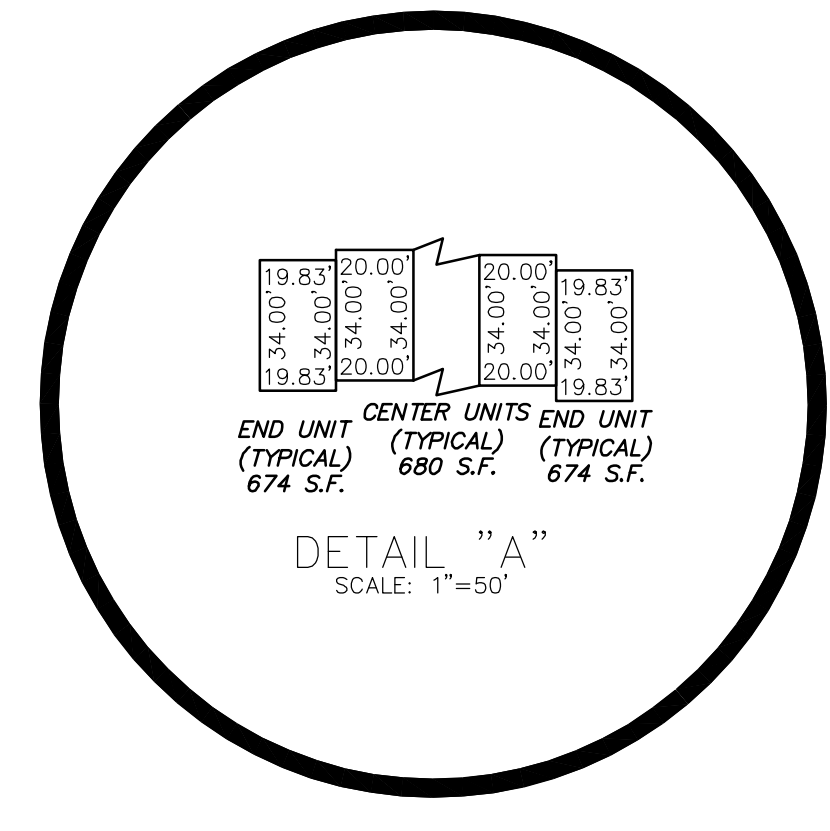
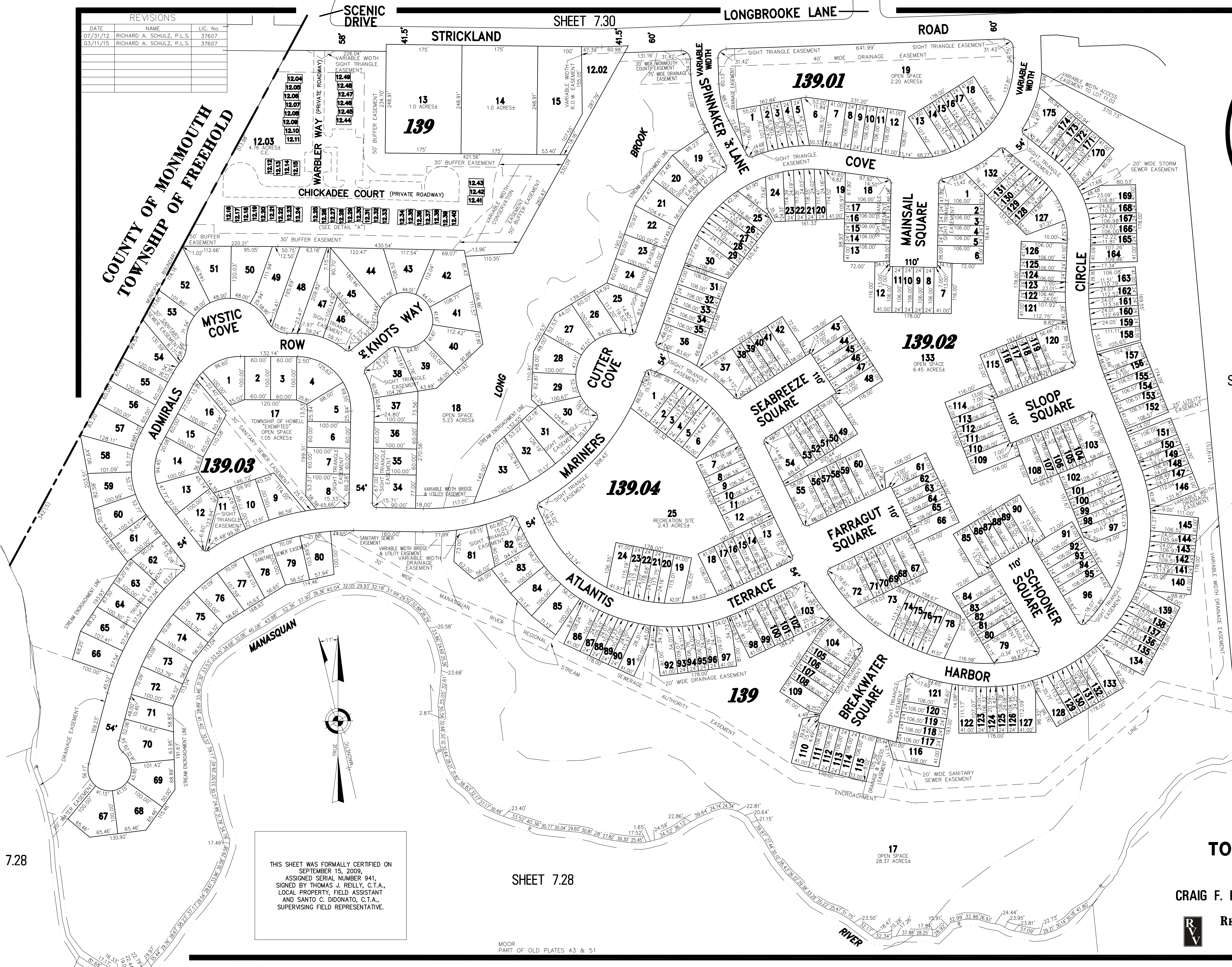


REVISIONS		
DATE	NAME	LIC. No.
07/31/12	RICHARD A. SCHULZ, P.L.S.	37607
03/11/15	RICHARD A. SCHULZ, P.L.S.	37607



SHEET 7.28

SHEET 7.28

THIS SHEET WAS FORMALLY CERTIFIED ON SEPTEMBER 15, 2009, ASSIGNED SERIAL NUMBER 941, SIGNED BY THOMAS J. REILLY, C.T.A., LOCAL PROPERTY, FIELD ASSISTANT AND SANTO C. DIDONATO, C.T.A., SUPERVISING FIELD REPRESENTATIVE.

SHEET 7.28

MOOR PART OF OLD PLATES 43 & 51

### TAX MAP

### TOWNSHIP OF HOWELL

MONMOUTH COUNTY NEW JERSEY  
SCALE: 1" = 100' DATE: 6-21-2005

CRAIG F. REMINGTON LAND SURVEYOR LIC. NO. 23924

**REMINGTON, VERNICK & VENA ENGINEERS**  
24 GA 28003300  
9 ALLEN STREET, TOMS RIVER, NJ 08753  
(732) 286-9220, FAX (732) 505-8416  
WEB SITE ADDRESS: WWW.RVE.COM