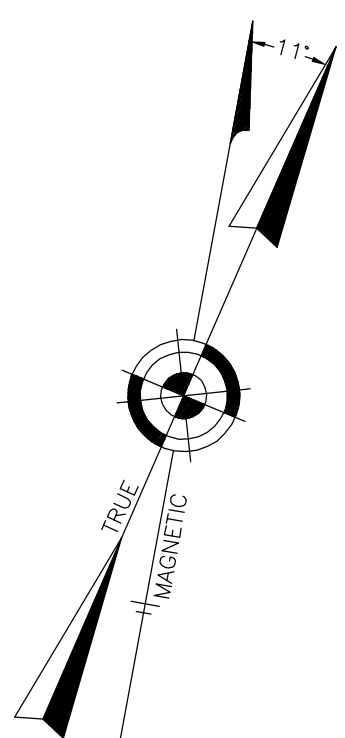


REVISIONS		
DATE	NAME	LIC. No.



SHEET 7.08

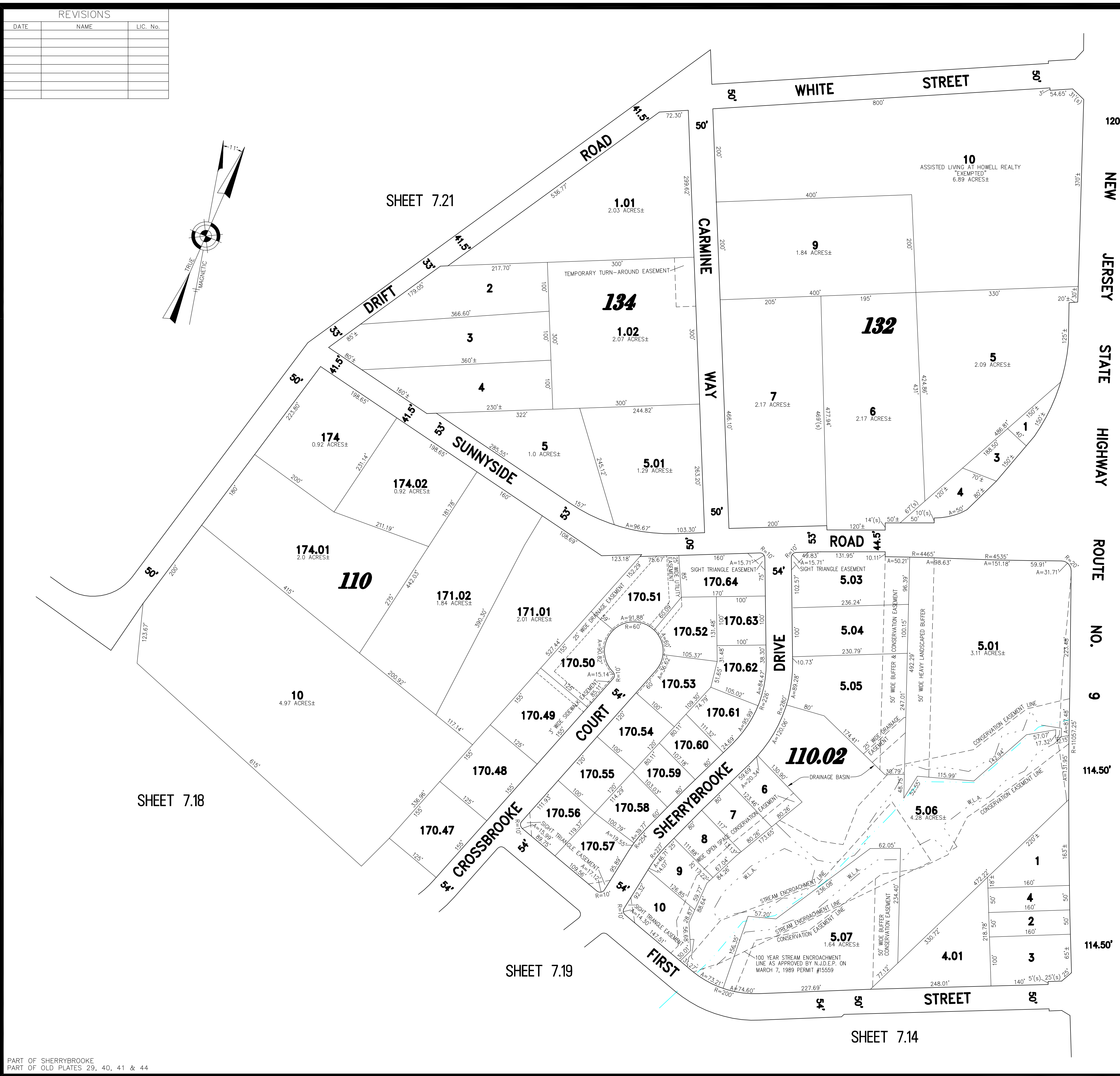
SHEET 7.09

SHEET 7.18

SHEET 7.19

SHEET 7.14

SHEET 7.13



NEW JERSEY STATE HIGHWAY ROUTE NO. 9

THIS SHEET WAS FORMALLY CERTIFIED ON SEPTEMBER 15, 2009, ASSIGNED SERIAL NUMBER 941, SIGNED BY THOMAS J. RELLY, C.T.A., LOCAL PROPERTY FIELD ASSISTANT AND SANTO C. DIDONATO, C.T.A., SUPERVISING FIELD REPRESENTATIVE.

TAX MAP
TOWNSHIP OF HOWELL

MONMOUTH COUNTY NEW JERSEY
SCALE: 1" = 100' DATE: 6-21-2005

CRAIG F. REMINGTON LAND SURVEYOR LIC. NO. 23924



REMINGTON, VERNICK & VENA ENGINEERS
9 ALLEN STREET, TOMS RIVER, NJ 08753
(732) 286-9220, FAX (732) 505-9416
WEB SITE ADDRESS: WWW.RVVE.COM

PART OF SHERRYBROOKE
PART OF OLD PLATES 29, 40, 41 & 44