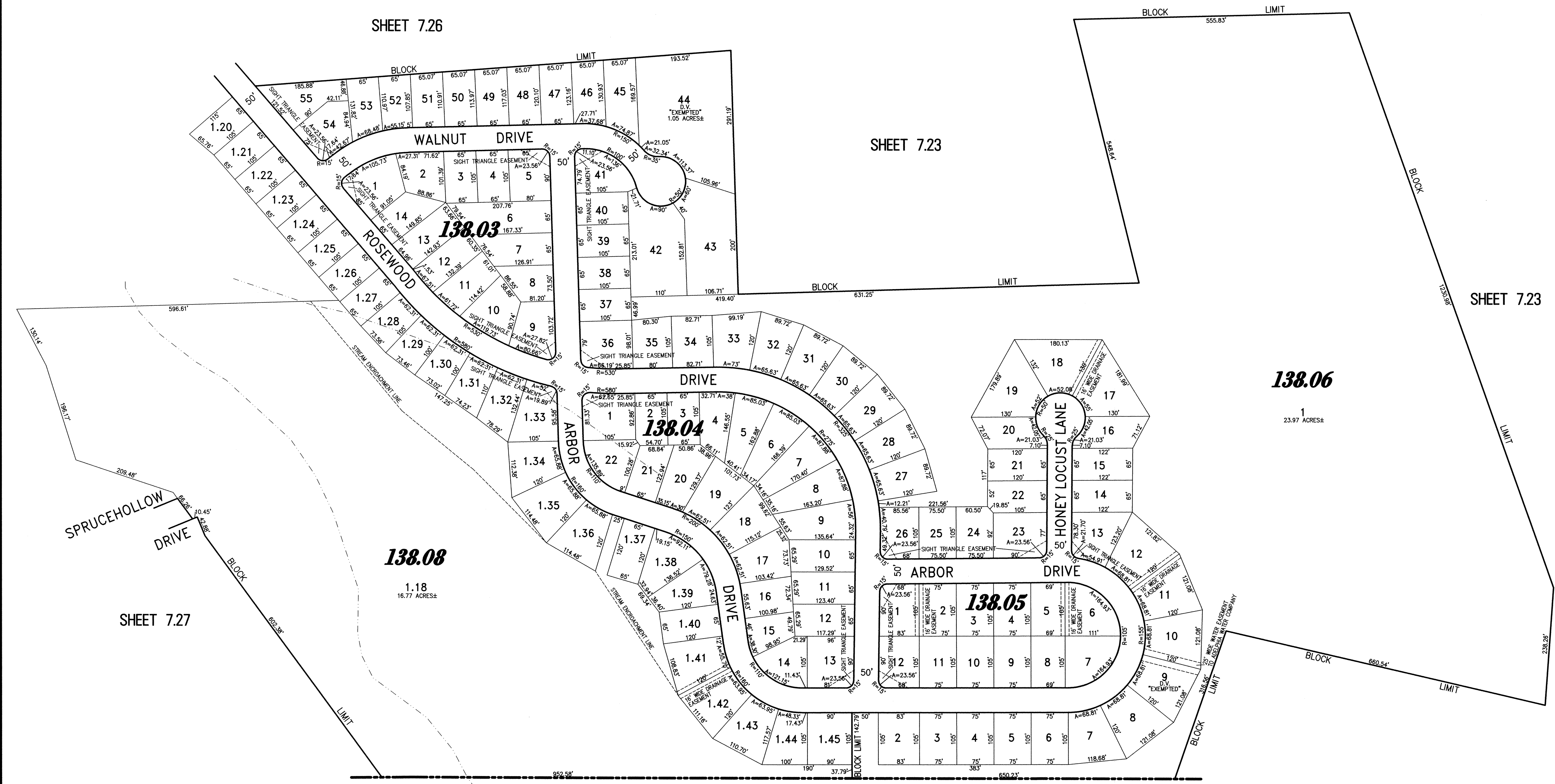


SHEET 7.26

SHEET 7.23

SHEET 7.23

SHEET 7.27



TOWNSHIP OF FREEHOLD
COUNTY OF MONMOUTH

TAX MAP
TOWNSHIP OF HOWELL

MONMOUTH COUNTY NEW JERSEY
SCALE: 1" = 100' DATE: 6-21-2005

CRAIG F. REMINGTON LAND SURVEYOR LIC. NO. 23924

REMINGTON, VERNICK & VENA ENGINEERS
24 GA 28003300
9 ALLEN STREET, TOMS RIVER, N.J. 08753
(732) 286-9220, FAX (732) 505-8416
WEB SITE ADDRESS: WWW.RVVE.COM

NEW JERSEY DEPARTMENT OF THE TREASURY
DIVISION OF TAXATION
PROPERTY ADMINISTRATION
APPROVED AS A TAX MAP PURSUANT TO THE AUTHORITY OF
N.J.S.A. 54:15-4 & 54:15-5
FOR THE DIRECTOR, DIVISION OF TAXATION
C.T.A.
THOMAS J. REILLY, CHIEF, LOCAL PROPERTY FIELD ASSISTANCE
C.T.A.
SERGIO C. DI DONATO, SUPERVISING FIELD REPRESENTATIVE
DATE: SEP 15 2009 SERIAL NO. 941

PART OF POINTE DE WOODS
PART OF OLD PLATE 50