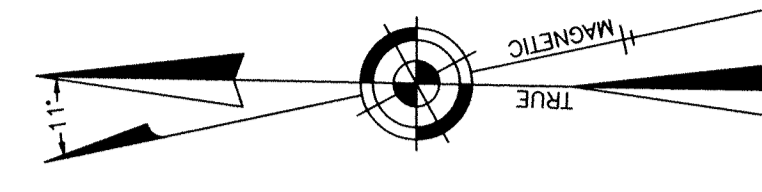


# TAX MAP TOWNSHIP OF HOWELL

MONMOUTH COUNTY NEW JERSEY  
SCALE: 1" = 100' DATE: 6-21-2005  
CRAIG F. REMINGTON LAND SURVEYOR LIC. NO. 23924

REMINGTON, VERNICK & VENA ENGINEERS  
9 ALLEN STREET, TOMS RIVER, N.J. 08753  
(732) 286-9220, FAX (732) 505-8446  
WEB SITE ADDRESS: WWW.RVVE.COM

NEW JERSEY DEPARTMENT OF THE TREASURY  
DIVISION OF TAXATION  
PROPERTY ADMINISTRATION  
APPROVED AS A TAX MAP PURSUANT TO THE AUTHORITY OF  
N.J.S.A. 54:1-15 & 54:1-16  
FOR THE DIRECTOR, DIVISION OF TAXATION  
THOMAS J. PELLICER, COUNTY CLERK, FIELD ASSISTANCE  
SANTO C. DIDONATO, SUPERVISING FIELD REPRESENTATIVE  
DATE: SEP 15 2005 SERIAL NO. 941



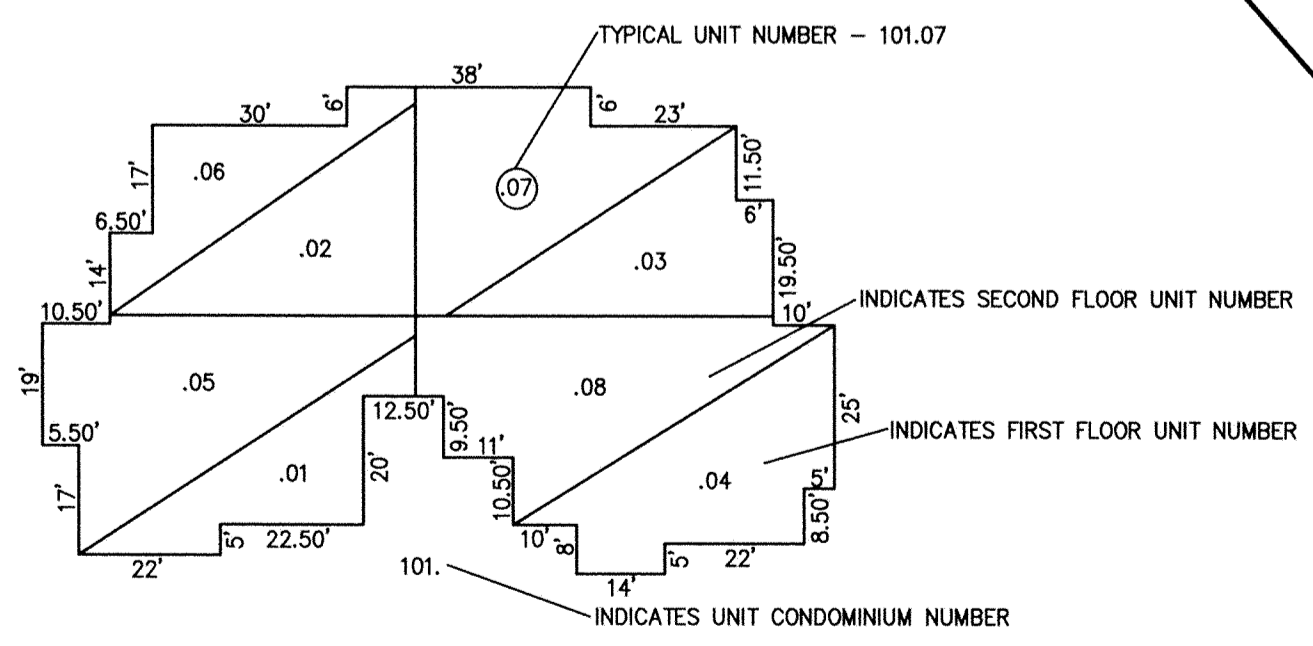
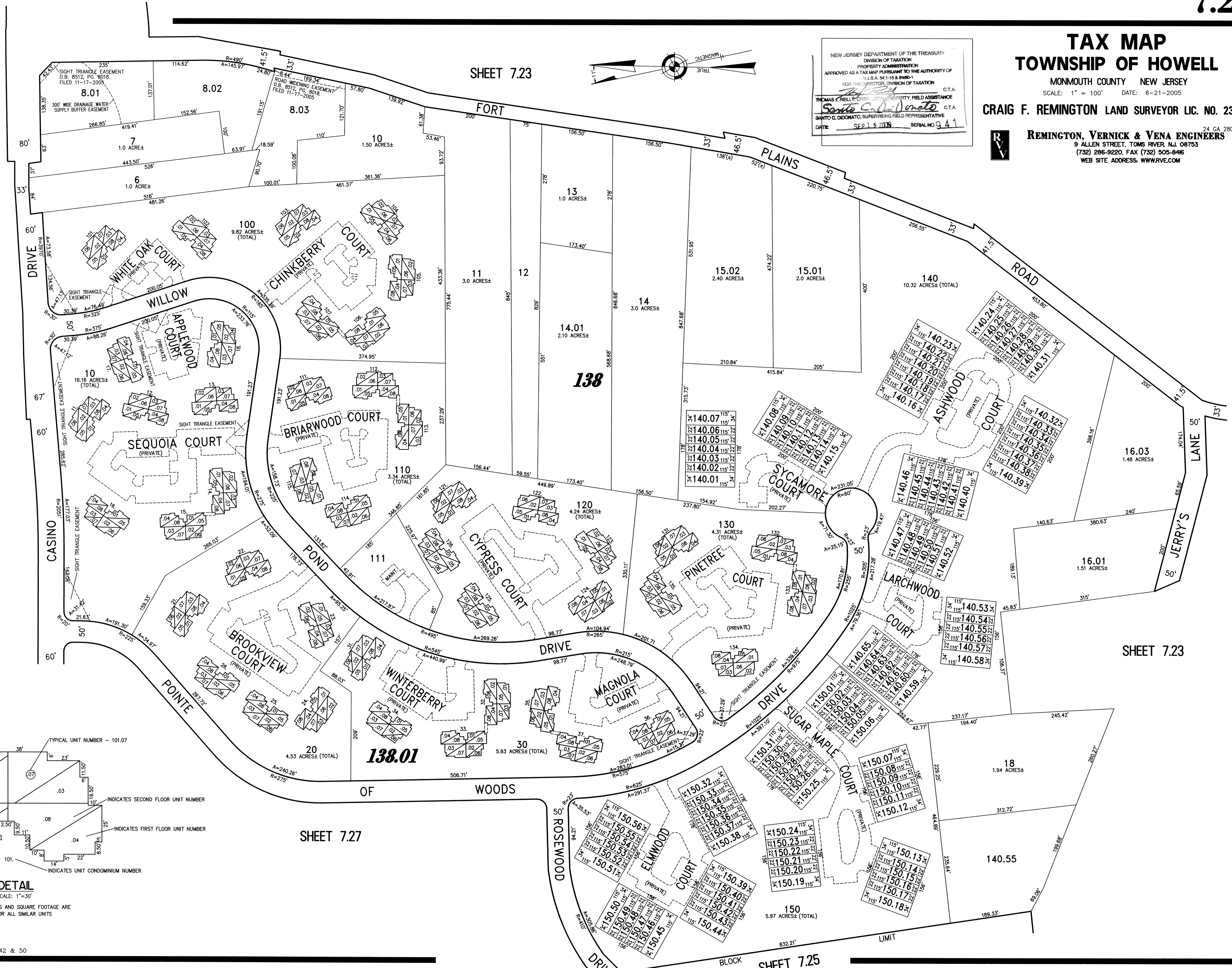
SHEET 7.23

SHEET 7.28

SHEET 7.23

SHEET 7.27

SHEET 7.25



NOTE: DIMENSIONS AND SQUARE FOOTAGE ARE TYPICAL FOR ALL SIMILAR UNITS

REVISED BY REMINGTON AND VERNICK ENGINEERS - 1-3-2007 - 13211055  
PART OF POINTE OF WOODS  
PLATE 50.01 & PART OF PLATES 42 & 50