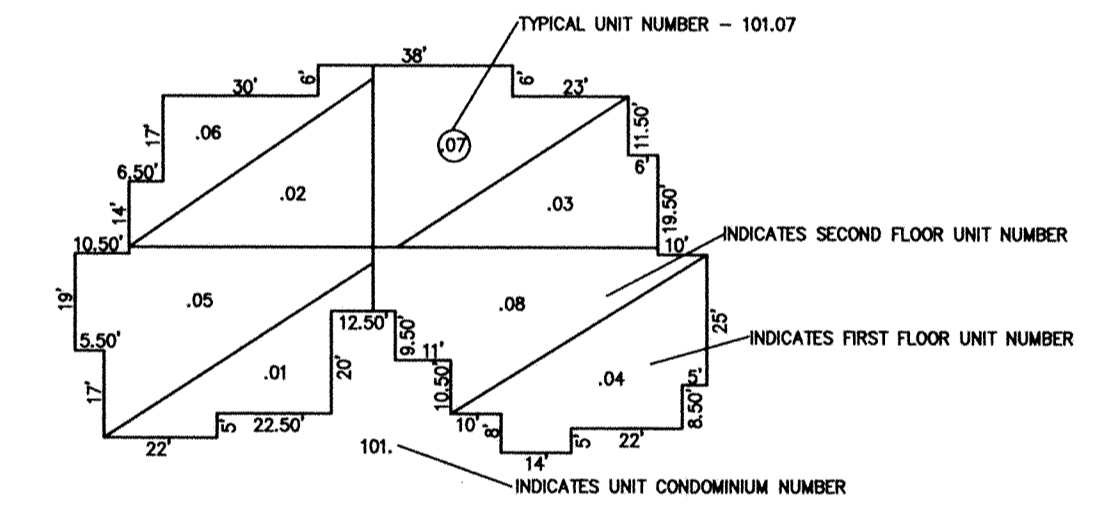
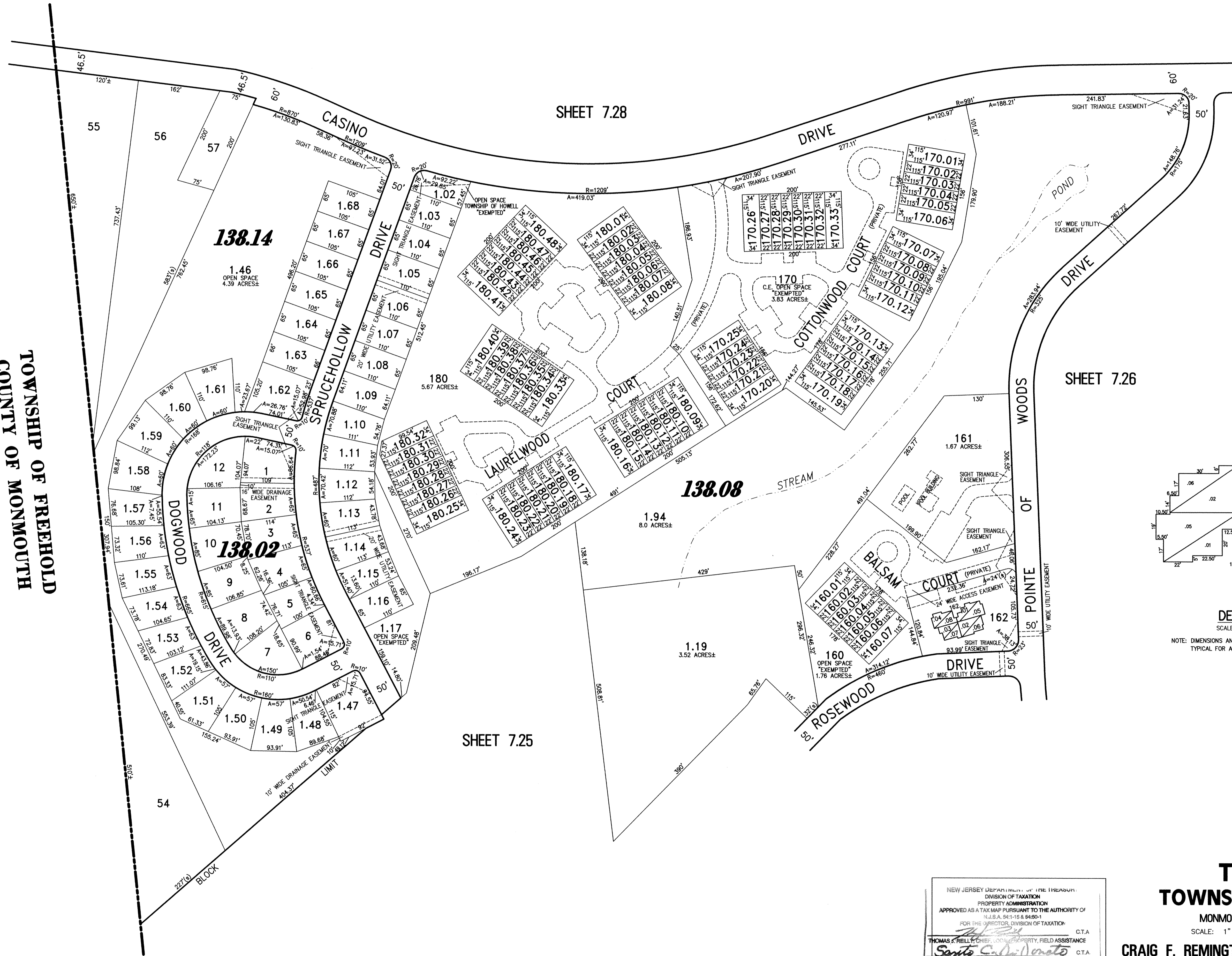


TOWNSHIP OF FREEHOLD  
COUNTY OF MONMOUTH



DETAIL  
SCALE: 1" = 30'  
NOTE: DIMENSIONS AND SQUARE FOOTAGE ARE TYPICAL FOR ALL SIMILAR UNITS

PART OF OLD PLATES 50, 50.01, 50.02 & 51

NEW JERSEY DEPARTMENT OF THE TREASURY  
DIVISION OF TAXATION  
PROPERTY ADMINISTRATION  
APPROVED AS A TAX MAP PURSUANT TO THE AUTHORITY OF  
N.J.S.A. 54:1-15 & 54:50-1  
FOR THE SUPERVISOR, DIVISION OF TAXATION  
THOMAS J. REILLY, CHIEF, LOCAL PROPERTY FIELD ASSISTANCE C.T.A.  
SANTO C. DIDONATO, SUPERVISING FIELD REPRESENTATIVE C.T.A.  
DATE: SEP 15 2009 SERIAL NO. 941

**TAX MAP**  
**TOWNSHIP OF HOWELL**  
MONMOUTH COUNTY NEW JERSEY  
SCALE: 1" = 100' DATE: 6-21-2005  
**CRAIG F. REMINGTON LAND SURVEYOR LIC. NO. 23924**  
**REMINGTON, VERNICK & VENA ENGINEERS**  
24 GA 28003300  
9 ALLEN STREET, TOMS RIVER, N.J. 08753  
(732) 286-9220, FAX (732) 505-9416  
WEB SITE ADDRESS: WWW.RVVE.COM