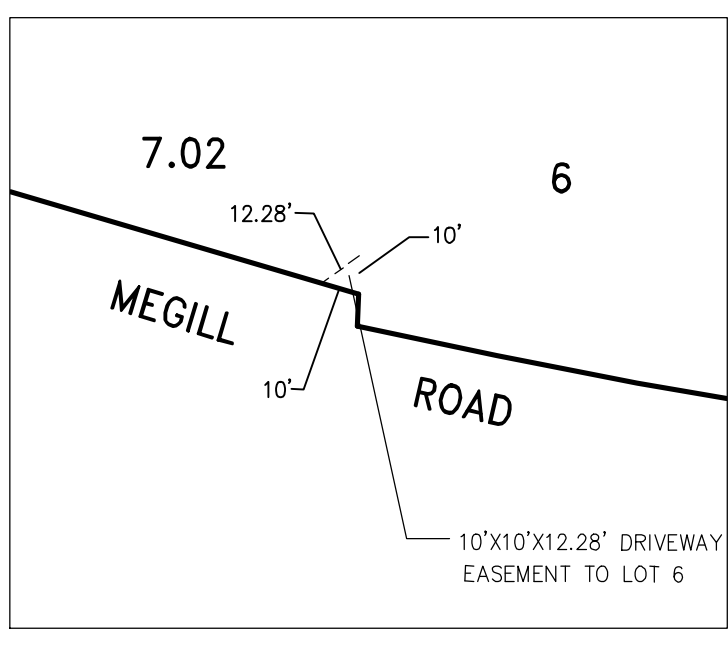
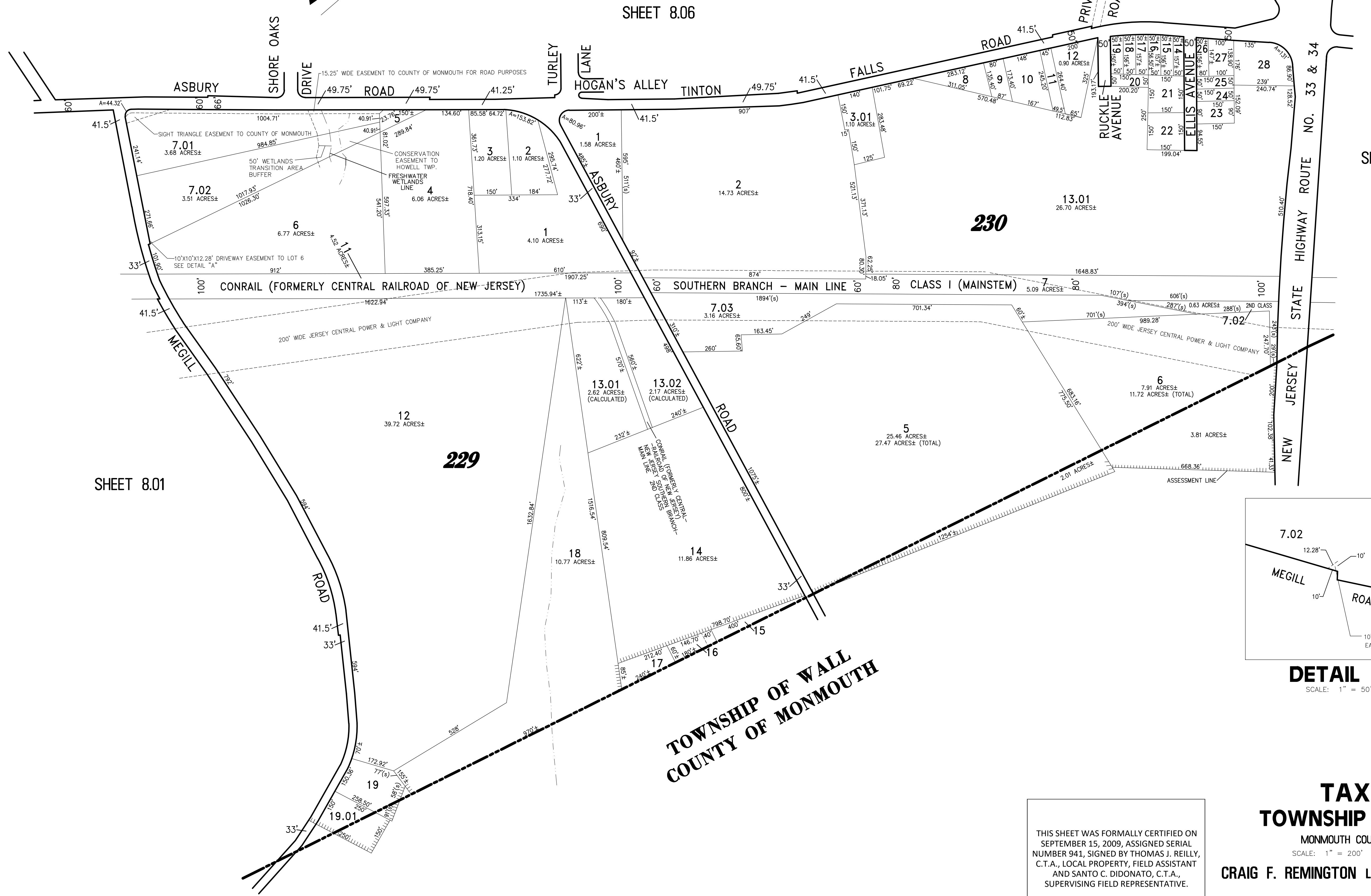
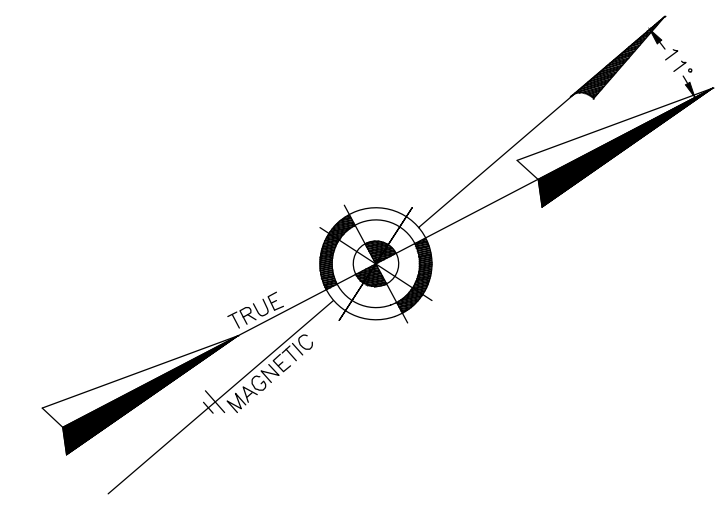


REVISIONS		
DATE	NAME	LIC. No.
02/15/16	GLEN J. LLOYD, P.L.S.	37598
12/28/20	GLEN J. LLOYD, P.L.S.	37598

NOTE:  
THIS SHEET HAS BEEN DRAWN USING COMPUTER AIDED  
DRAFTING/DESIGN (CAD/D) AND COORDINATE GEOMETRY (COGO).



PART OF OLD PLATES 82 & 83

THIS SHEET WAS FORMALLY CERTIFIED ON  
SEPTEMBER 15, 2009, ASSIGNED SERIAL  
NUMBER 941, SIGNED BY THOMAS J. REILLY,  
C.T.A., LOCAL PROPERTY, FIELD ASSISTANT  
AND SANTO C. DIDONATO, C.T.A.,  
SUPERVISING FIELD REPRESENTATIVE.

**TAX MAP**  
**TOWNSHIP OF HOWELL**  
MONMOUTH COUNTY NEW JERSEY  
SCALE: 1" = 200' DATE: 6-21-2005  
**CRAIG F. REMINGTON LAND SURVEYOR LIC. NO. 23924**  
**REMINGTON, VERNICK & VENA ENGINEERS**  
24 GA 28003300  
9 ALLEN STREET, TOMS RIVER, N.J. 08753  
(732) 286-9220, FAX (732) 505-8416  
WEB SITE ADDRESS: WWW.RVE.COM